

500A W. JACKSON ST. MEXICO, MO



FOR MORE INFORMATION PLEASE CONTACT

Jack L. Maher, III

Broker-Officer

Mobile (573) 489-6860

Work (573) 228-6321

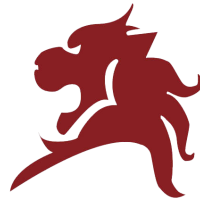
FAX (815) 550-1506

Buttonwood Business Center

3610 Buttonwood Dr., Suite 200

Columbia, MO 65201

Email at maher3@jlmproperties.com



MAHER

COMMERCIAL REAL ESTATE

The information contained herein is for illustration only - dimensions are approximate only.
This information is not to be reproduced or used for construction or permitting. The information contained within this brochure is believed to be accurate as of the date of input, however, JLM Properties, Inc., assumes no responsibility for the accuracy of the information provided.

WWW.MAHERCRE.COM

500A W. JACKSON ST. MEXICO, MO

For Lease: \$3 S.F. NNN

Space Overview:

- 28,644 S.F. Anchor space available at the endcap of West Plaza.
- Previously a grocer store, Landlord will consider a subdivide.
- Buildout allowance available subject to terms and credit of tenant.
- West Plaza Center features several national tenants including Ace Hardware, Dollar General, Carquest, and Walgreens.
- Hard corner intersection sees 9,600 vehicles per day.
- The lease is on a NNN basis, NNN's \$2 S.F. (2025).

FOR MORE INFORMATION PLEASE CONTACT

Jack L. Maher, III

Broker-Officer

Mobile (573) 489-6860

Work (573) 228-6321

FAX (815) 550-1506

Buttonwood Business Center

3610 Buttonwood Dr., Suite 200

Columbia, MO 65201

Email at maher3@jlmproperties.com



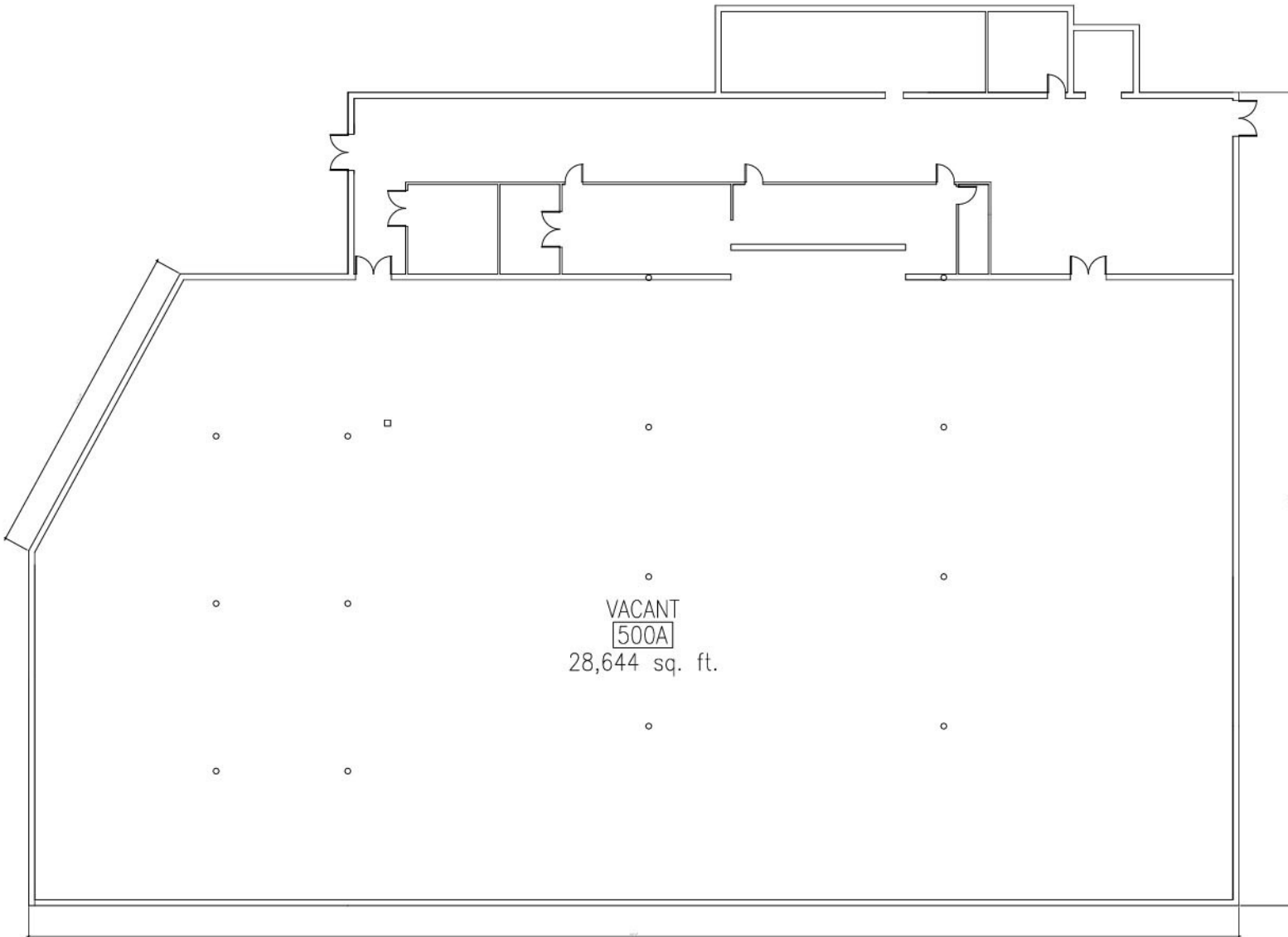
MAHER

COMMERCIAL REAL ESTATE

The information contained herein is for illustration only - dimensions are approximate only.
This information is not to be reproduced or used for construction or permitting. The information contained within this brochure is believed to be accurate as of the date of input, however, JLM Properties, Inc., assumes no responsibility for the accuracy of the information provided.

WWW.MAHERCRE.COM

500A W. JACKSON ST. MEXICO, MO



FOR MORE INFORMATION PLEASE CONTACT

Jack L. Maher, III

Broker-Officer

Mobile (573) 489-6860

Work (573) 228-6321

FAX (815) 550-1506

Buttonwood Business Center

3610 Buttonwood Dr., Suite 200

Columbia, MO 65201

Email at maher3@jlmproperties.com



MAHER

COMMERCIAL REAL ESTATE

The information contained herein is for illustration only - dimensions are approximate only.
This information is not to be reproduced or used for construction or permitting. The information contained within this brochure is believed to be accurate as of the date of input, however, JLM Properties, Inc., assumes no responsibility for the accuracy of the information provided.

WWW.MAHERCRE.COM

500A W. JACKSON ST. MEXICO, MO



FOR MORE INFORMATION PLEASE CONTACT

Jack L. Maher, III

Broker-Officer

Mobile (573) 489-6860

Work (573) 228-6321

FAX (815) 550-1506

Buttonwood Business Center

3610 Buttonwood Dr., Suite 200

Columbia, MO 65201

Email at maher3@jlmproperties.com



MAHER

COMMERCIAL REAL ESTATE

The information contained herein is for illustration only - dimensions are approximate only.
This information is not to be reproduced or used for construction or permitting. The information contained within this brochure is believed to be accurate as of the date of input, however, JLM Properties, Inc., assumes no responsibility for the accuracy of the information provided.

WWW.MAHERCRE.COM

500A W. JACKSON ST. MEXICO, MO



FOR MORE INFORMATION PLEASE CONTACT

Jack L. Maher, III

Broker-Officer

Mobile (573) 489-6860

Work (573) 228-6321

FAX (815) 550-1506

Buttonwood Business Center

3610 Buttonwood Dr., Suite 200

Columbia, MO 65201

Email at maher3@jlmproperties.com



MAHER

COMMERCIAL REAL ESTATE

The information contained herein is for illustration only - dimensions are approximate only.
This information is not to be reproduced or used for construction or permitting. The information contained within this brochure is believed to be accurate as of the date of input, however, JLM Properties, Inc., assumes no responsibility for the accuracy of the information provided.

WWW.MAHERCRE.COM