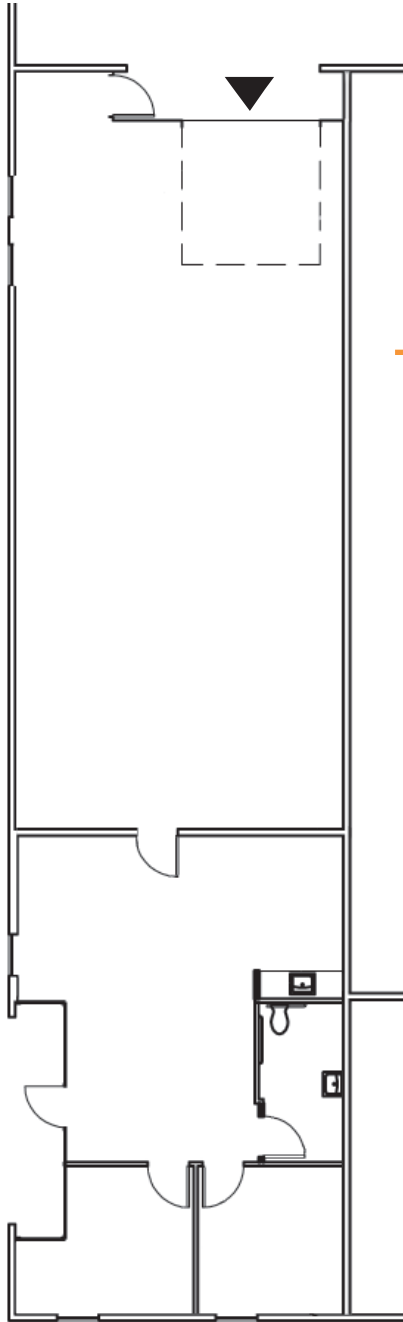


**2,230 SF INDUSTRIAL SPACE AVAILABLE
BUILDING 8, SUITE 860**

12004 NE 95TH STREET, SUITE 860, VANCOUVER, WA 98682



◀ = Pony Dock

**SUITE 860
HIGHLIGHTS & FEATURES**

- 870 SF Office Space
- 1,360 SF Warehouse Space
- 2 Private Offices
- Coffee Bar
- 1 Pony Dock
- 16' Clear Height
- 120/208 Volt, 3-Phase Power
- Sprinklered Building
- On-Site Property Management
- Restaurants and Retail Amenities nearby:
Los Jalapenos, Columbia Credit Union,
Papa John's Pizza, Chevron & Many More
- Ample Parking

paddencp.com

Available: Now



NOW AVAILABLE! BUILDING 8, SUITE 860

12004 NE 95th Street, Suite 860 Vancouver, WA 98682



LEASING CONTACTS

Coleman Brown, CCIM, Principal Broker
Columbia Commercial, LLC
Coleman@CCPprop.com
360.952.4758

paddencp.com



OWNED & MANAGED BY:



Columbia Commercial
Commercial Leasing | Sales | Property Management



WESTCORE