

468

ACTON, MA
GREAT ROAD



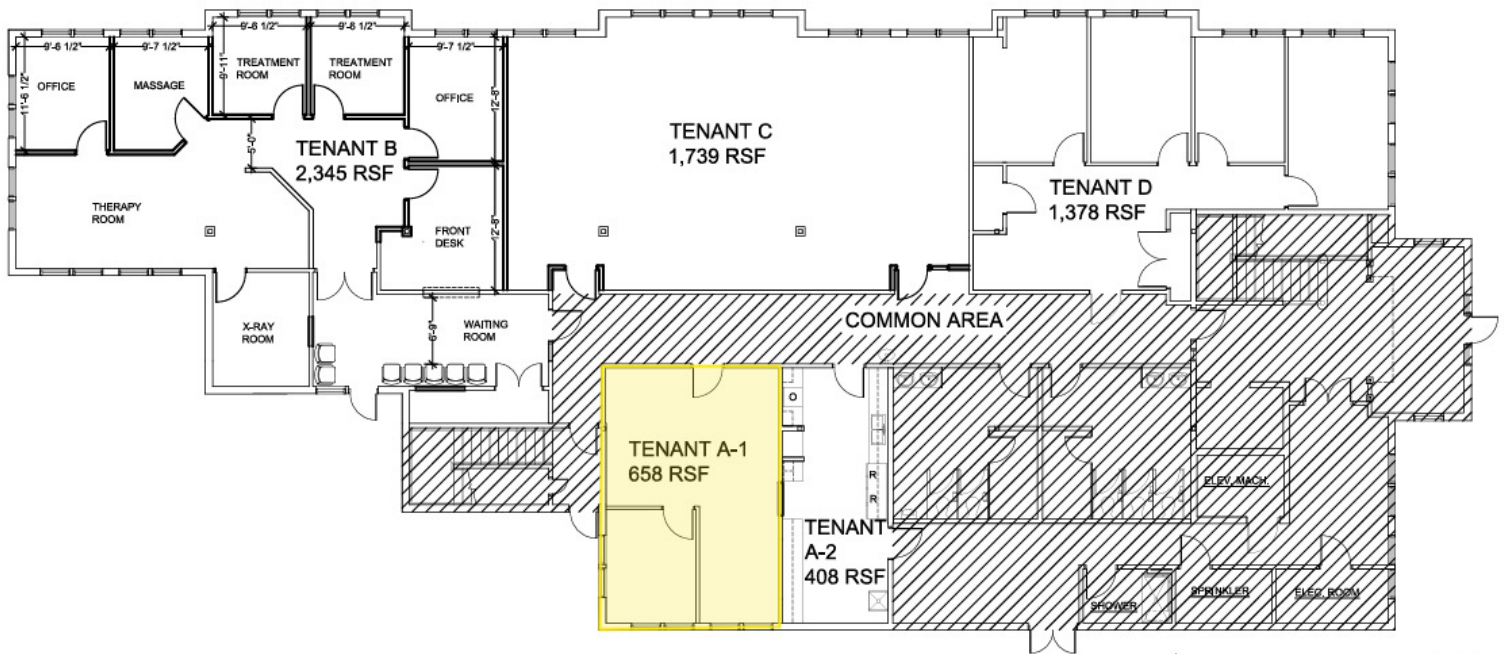
COMMERCIAL
O'BRIEN
PROPERTIES, INC

400 - 600 SF For Lease



SUMMARY / SPECIFICATIONS

468 GREAT RD ACTON, MA



PROPERTY DESCRIPTION

Positioned in the vibrant community of Acton, MA, 468 Great Rd is surrounded by a wealth of amenities and attractions perfectly suited for office and office building tenants. The area offers a diverse mix of dining options, including the popular Not Your Average Joe's and Twin Seafood, ideal for business lunches and client meetings. The nearby Acton Arboretum and Idylwilde Farms provide serene settings for relaxation and fresh-air inspiration. With easy access to commuter routes and public transportation, this location seamlessly merges business and leisure, making it an optimal choice for office and office building tenants seeking a dynamic and accessible environment for their professional pursuits.

PROPERTY HIGHLIGHTS

- Year built: 1998
- 400-600 SF available
- Zoned: Office
- 65 parking spaces
- Elevators: 1
- Sprinklers: Yes
- HVAC: Yes
- Located minutes from Rte 2 and I-495

OFFERING SUMMARY

Lease Rate:	Negotiable
Available SF:	400 - 600 SF
Lot Size:	2.87 Acres
Building Size:	14,845 SF

DEMOGRAPHICS	0.3 MILES	0.5 MILES	1 MILE
Total Households	116	768	1,901
Total Population	302	1,985	4,850
Average HH Income	\$226,876	\$225,256	\$201,854

PROPERTY / LOCATION

468 GREAT RD ACTON, MA



Google

Map data ©2026 Imagery ©2026 Airbus, Maxar Technologies

ROB MCGARRY
Vice President
Mobile: 978.209.3211
rob@obriencommercial.com

COMMERCIAL
O'BRIEN
PROPERTIES, INC



468 GREAT ROAD

ACTON, MA



ROB MCGARRY

Vice President
Mobile: 978.209.3211
rob@obriencommercial.com

We obtained the information above from sources we believe to be reliable. However, we have not verified its accuracy and make no guarantee, warranty or representation about it. It is submitted subject to the possibility of errors, omissions, change of price, rental or other conditions, prior sale, lease or financing, or withdrawal without notice. We include projections, opinions, assumptions or estimates for example only, and they may not represent current or future performance of the property. You and your tax and legal advisors should conduct your own investigation of the property and transaction.