

DECATUR BUSINESS CENTER

5335-5353 SNAPPINGER WOODS DR, DECATUR, GA 30035



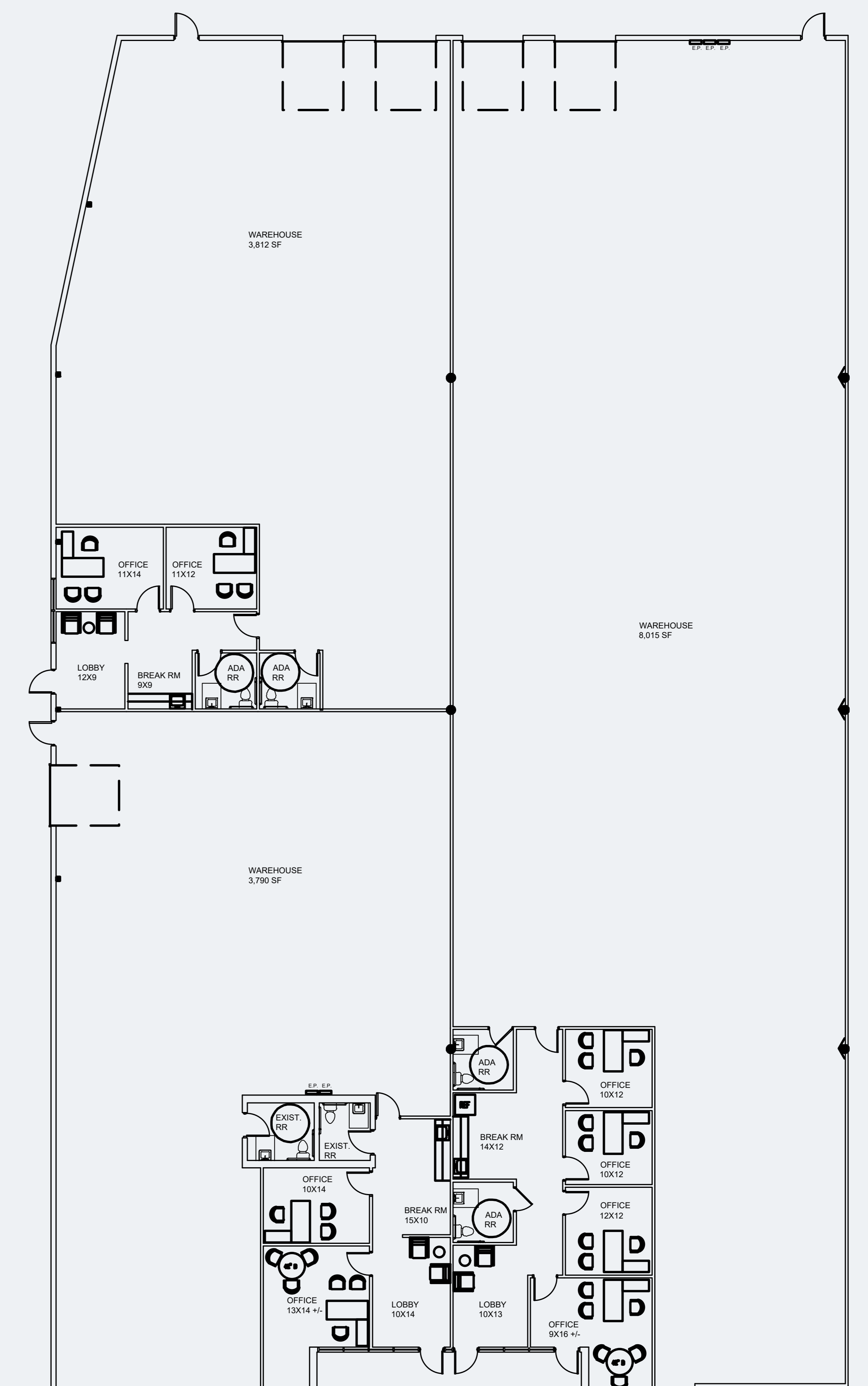
Industrial/Flex Building For Lease

PROPERTY OVERVIEW

- Built in 1973
- Zoning: M (Light Industrial)
- Clear Height: 21'
- Fully Sprinklered
- Power: 400 Amp, 120/208v, 3 Phase
- 80 Parking Spaces
- Subdividable Space
- Immediate Access to I-20

AVAILABLE SPACES

SUITE	UNIT DESCRIPTION
5333	4,862 SF 1,072 SF Office 1 Drive In Door
5335	4,596 SF 784 SF Office 2 Dock High Doors
5337	9,342 SF 1,327 SF Office 2 Dock High Doors



FOR MORE INFORMATION,
PLEASE CONTACT:



JACK KIMBREL
229.894.8152
jack@riseprop.com

