

FOR LEASE

MAKER SPACE

522 N THOMPSON STREET, PORTLAND, OR 97227

BRETT BAYNE

503.972.7280

bayne@macadamforbes.com

KYLE LATTA

503.869.2111

kylel@macadamforbes.com



PROPERTY DESCRIPTION

Variety of space sizes available in this two story maker space. All availabilities are open with high ceilings, abundant light, and constructed with original growth timber, and exposed concrete.

PROPERTY HIGHLIGHTS

- Shared loading dock
- Shared building conference room, freight elevator, and basement storage
- Nearby off-street parking available

OFFERING SUMMARY

Lease Rate:	\$12/SF + NNN
NNNs (2026):	\$5.16/SF/yr (\$0.43/SF/mth)
Available SF:	345 - 2,454 SF
Building Size:	36,156 SF
Zoning:	IG1, General Industrial 1

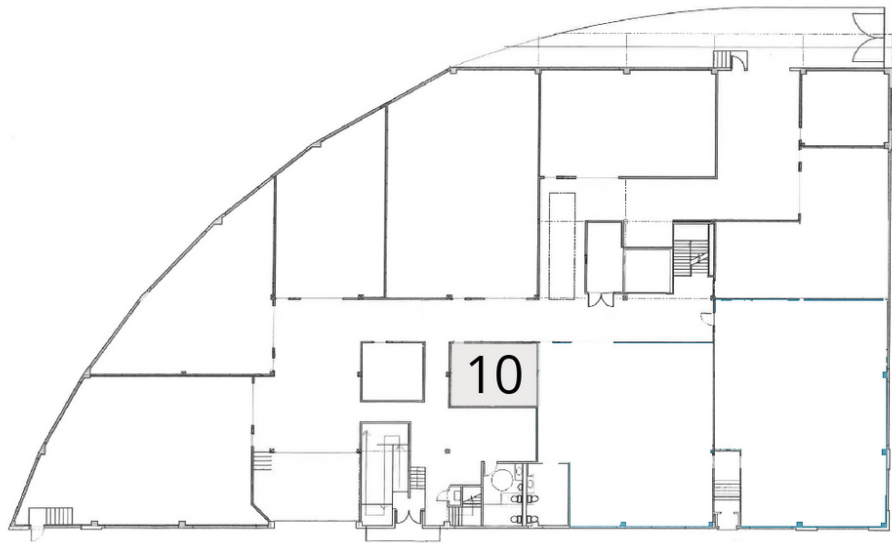
SPACES	LEASE RATE	SPACE SIZE
Suite 10	\$510 per month	345 SF
Suite 13	\$2,044 per month	2,044 SF
Suite 14	\$2,454 per month	2,454 SF
Suite 16	\$2,048 per month	2,048 SF
Suite 17	\$2,055 per month	2,055 SF
Suite 21	\$1,662 per month	1,662 SF

BRETT BAYNE

503.972.7280 | bayne@macadamforbes.com

KYLE LATTA

503.869.2111 | kylel@macadamforbes.com



First Floor



Second Floor

LEGEND

Available

BRETT BAYNE

503.972.7280 | bayne@macadamforbes.com

KYLE LATTA

503.869.2111 | kylel@macadamforbes.com



LOCATION OVERVIEW

522 N Thompson Street is located in the rapidly changing Eliot neighborhood. The property is located in close proximity to the Moda Center, Veteran's Memorial Coliseum and restaurant amenities. There is quick and immediate access to I-5 and the MAX Yellow Line.

BRETT BAYNE

503.972.7280 | bayne@macadamforbes.com

KYLE LATTA

503.869.2111 | kylel@macadamforbes.com