

1551 STEVENS CHAPEL RD.

Smithfield, NC 27577

± 6 ACRES LAND

For Ground Lease

70

70

STEVENS CHAPEL ROAD

LEASING AGENT

JUDSON MCMILLAN

judsonmcmillan@yorkproperties.com

919.645.2764

2108 Clark Avenue

Raleigh, NC 27605

www.yorkproperties.com

@yorkproperties1



york

LEASING DETAILS

ADDRESS

1551 Stevens Chapel Road
Smithfield, NC 27577

LEASE RATE

- \$5,000/Month
- 1-2 Year Term

SIZE

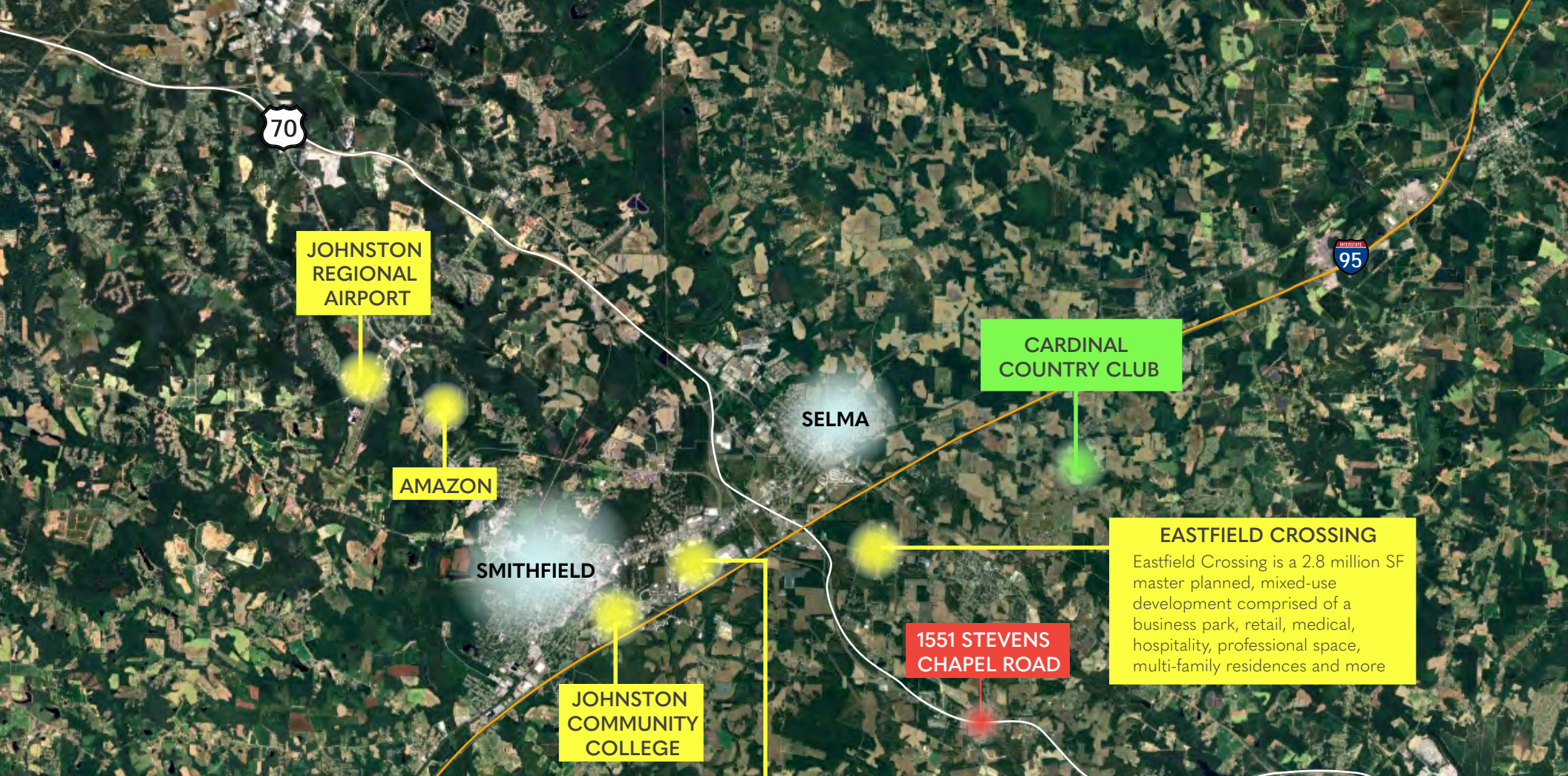
- ±6 Acres
- Approx. 5 cleared useable acres
- Zoned GB (General Business)
- Direct access to Hwy. 70 across Stevens Chapel Rd.

ABOUT JOHNSTON COUNTY

“Johnston County is located in the Piedmont Region of North Carolina, just 30 minutes from Raleigh, our state capital. RDU International Airport is 30-45 minutes west from Johnston along the I-40 corridor. The county offers great connections to history, entertainment, dining, lodging, and outlet shopping, along with a generous helping of true southern hospitality.”

— JohnstonCountyNC.org





JOHNSTON REGIONAL AIRPORT

AMAZON

SMITHFIELD

SELMA

CARDINAL COUNTRY CLUB

EASTFIELD CROSSING
Eastfield Crossing is a 2.8 million SF master planned, mixed-use development comprised of a business park, retail, medical, hospitality, professional space, multi-family residences and more

1551 STEVENS CHAPEL ROAD

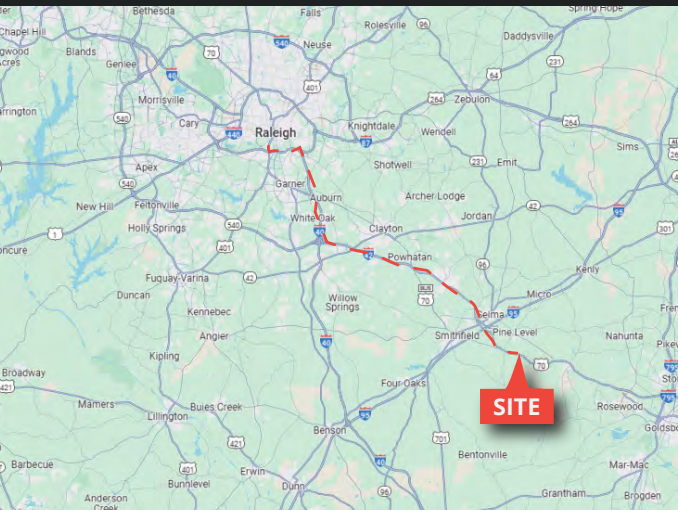
JOHNSTON COMMUNITY COLLEGE

CAROLINA PREMIUM OUTLETS
LOFT
COLUMBIA
JOURNEYS
CARTER'S
AUNTIE ANNE'S
ZALES
FOSSIL
KATE SPADE
AEROPOSTALE
RALPH LAUREN

PRINCETON



APPROX. 37 MIN FROM THE TRIANGLE



SITE

JOHNSON COUNTY PROFILE CENSUS

63.9%

Employment
Rate

215,999

Total Population

38.6

Median Age

84,340

Housing Units

\$79,592

Median Household
Income

3,768

Employer Establish-
ments

2024 DEMOGRAPHICS, 1551 STEVENS CHAPEL RD.



MILE
RADIUS



POPULATION



HOUSEHOLDS



HOUSEHOLD
INCOME



DAYTIME
POPULATION

1

917

366

\$70,192

152

3

6,123

2,424

\$76,656

673

5

19,079

7,599

\$71,473

5,776