



Moses Tucker
PARTNERS

Little Rock (HEADQUARTERS)
200 River Market Ave, Suite 300
Little Rock, AR 72201
501.376.6555

Bentonville (BRANCH)
805 S Walton Blvd, Suite 123
Bentonville, AR 72712
479.271.6118

WAREHOUSE SPACE FOR LEASE

2260 W Centerton Blvd, Centerton, AR



**W Centerton
Blvd
14,000 VPD**

CONTACT US TODAY
479.271.6118 | mosestucker.com



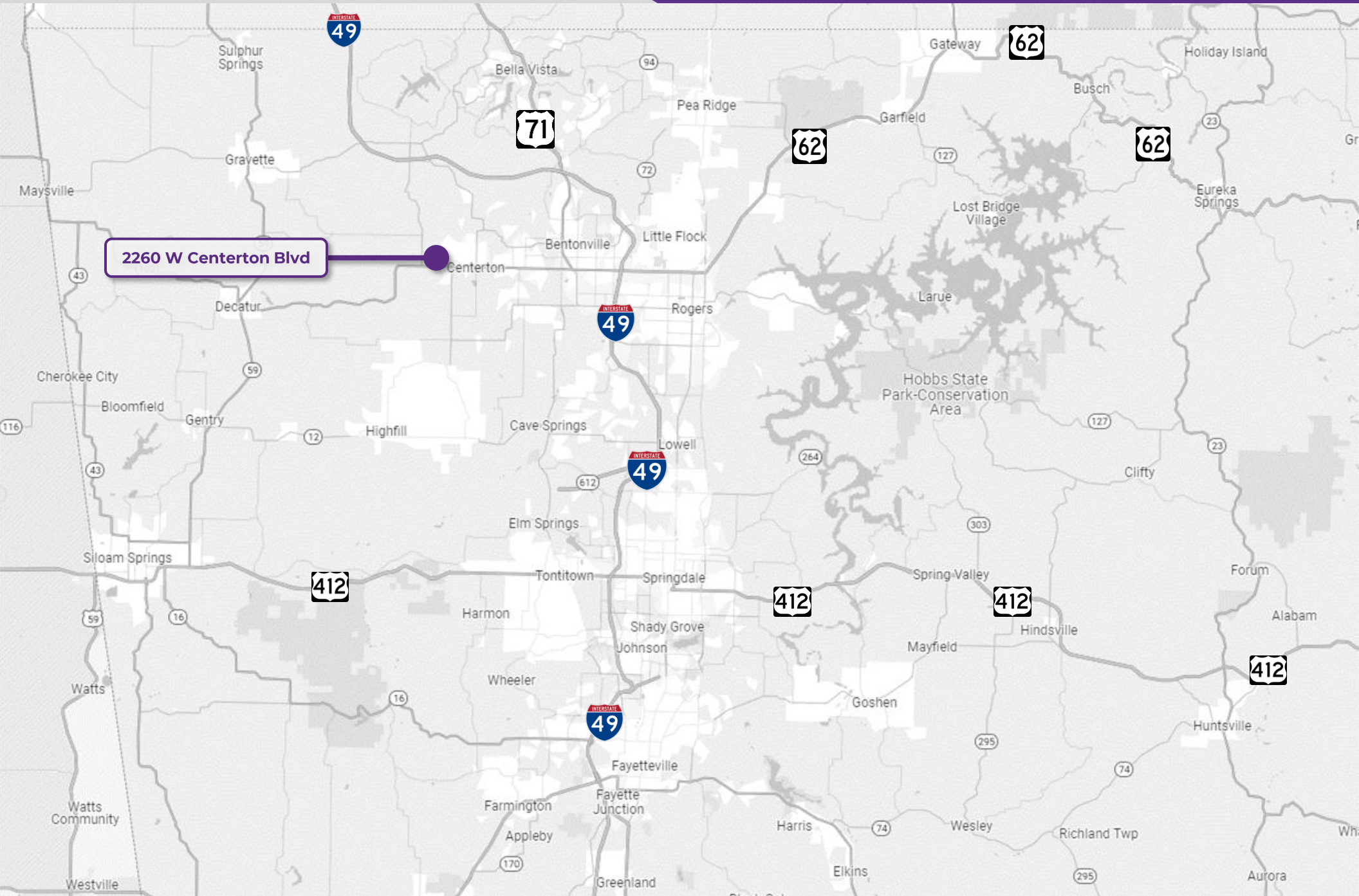
OFFERING SUMMARY

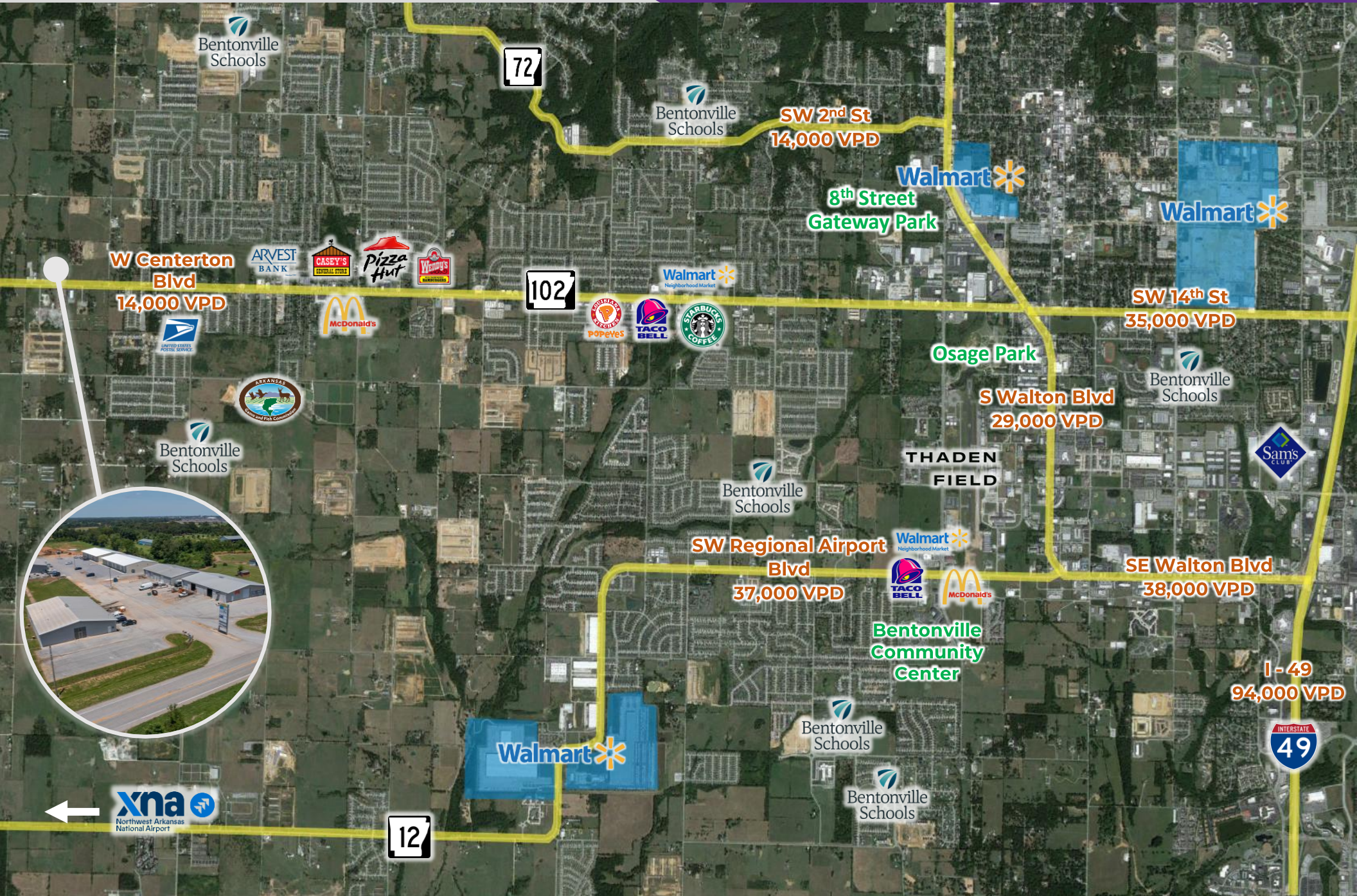
Offering	For Lease
Address	2260 W Centerton Blvd, Centerton, AR 72719
Property Type	Warehouse/Industrial
Lease Rate	\$11.25/SF - \$12.25/SF
Lease Type	NNN (Est. \$1.75/SF)
Available Space	± 3,750 SF – 11,250 SF

PROPERTY HIGHLIGHTS

- Building 1 has great visibility and frontage on Highway 102 (14,000 VPD)
- Building 5 & 6 are new construction warehouses
- Monument signage available
- Drive in door and loading well





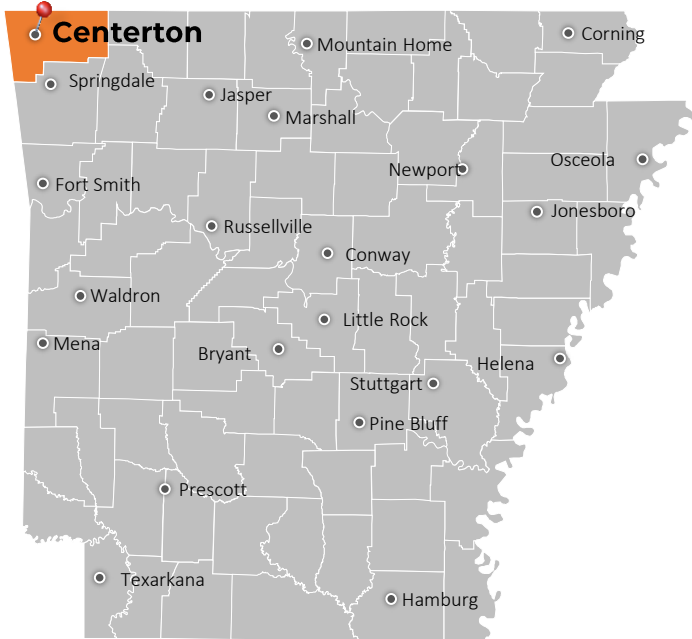




W Centerton Blvd
14,000 VPD

AVAILABLE SPACE	SIZE (SF)	LEASE TYPE	RATE	NNN (Estimated)
Building 1	7,500 SF	NNN	\$12.25/SF	\$1.75/SF
Building 4	9,000 SF	NNN	\$11.25/SF	\$1.75/SF
Building 5	3,750 – 11,250 SF	NNN	\$11.75/SF	\$1.75/SF
Building 6	3,750 – 11,250 SF	NNN	\$11.75/SF	\$1.75/SF

CENTERTON, AR



Centerton is a city in Benton County, Arkansas. Located west of Bentonville on Highway 102, Centerton is part of the Northwest Arkansas region, which is one of the fastest-growing metro areas in the country. Once a predominantly agricultural area, Centerton has diversified its economy with the growth of nearby cities like Bentonville, home to Walmart's headquarters. Many residents commute to nearby cities for work, contributing to the local economy through retail, service industries, and healthcare.

Centerton has seen significant residential and commercial development in recent years, with new subdivisions, shopping centers, and amenities catering to its growing population. This growth has led to increased demand for housing and services. Interstate 49 runs nearby, providing convenient access to other parts of Northwest Arkansas and beyond. The Northwest Arkansas Regional Airport (XNA) is also relatively close, offering connections to major cities across the United States.

DEMOGRAPHICS*

Population

3 MILES

5 MILES

10 MILES

21,142

55,613

177,839

Households

7,188

19,539

67,145

Average Age

33.0

33.1

37.4

Average Household Income

\$122,454

\$135,491

\$130,485

Businesses


175

751

4,691

**Demographic details based on property location*

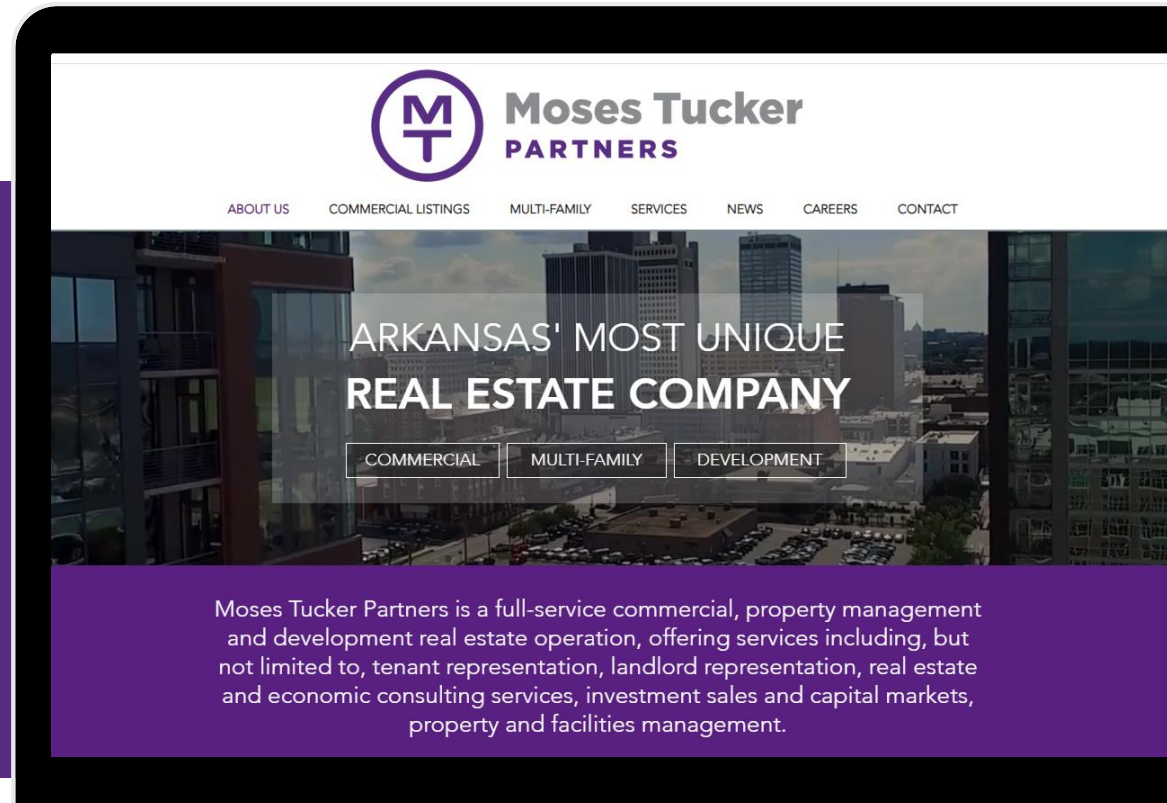
CONNECT

 (479) 271-6118

 www.mosestucker.com

 info@mosestucker.com

 805 S Walton Blvd, Suite 123,
Bentonville, AR 72712



Jeff Snyder, CCIM
Brokerage Director
479.372.0001
jsnyder@mosestucker.com

DISCLAIMER
Moses Tucker Partners represents the owner of the property represented herein. Although all information furnished regarding property for sale, rental, or financing is from sources deemed reliable, such information has not been verified and no express representation is made nor is any to be implied as to the accuracy thereof and it is submitted subject to errors, omissions, change of price, rental or other conditions, prior sale, lease or financing, or withdrawal without notice and to any special conditions imposed by our principal.