

OFFICE/MEDICAL FOR LEASE

16616 SUNRISE LAKES , CLERMONT, FL 34714

Building 5 - Sunrise Med:



OFFERING SUMMARY

Lease Rate:	Please Inquire
Building Size:	5,050 SF
Available SF:	2,025 - 5,050 SF
Lot Size:	0.06 Acres
Number of Units:	1
Year Built:	2024

PROPERTY OVERVIEW

This modern property offers 2,525 - 5,050 square feet of versatile space ideal for retail, office, or commercial services. Featuring ample parking, high visibility from Sunrise Lakes Boulevard, and easy access to major transportation routes, this location is perfect for businesses seeking to establish or expand their presence. With a well-maintained exterior and a customizable interior layout, this property presents a blank canvas for your vision. Don't miss the chance to make this highly adaptable space the home for your next venture.

PROPERTY HIGHLIGHTS

- Only 1.5 miles from Orlando Health Southlake Hospital ER
- 5.44/1,000 Parking Ratio
- 2,025 - 5,050 sf Available

PRESENTED BY
ASHLEY WALKER
407.430.3462
awalker@millenia-partners.com

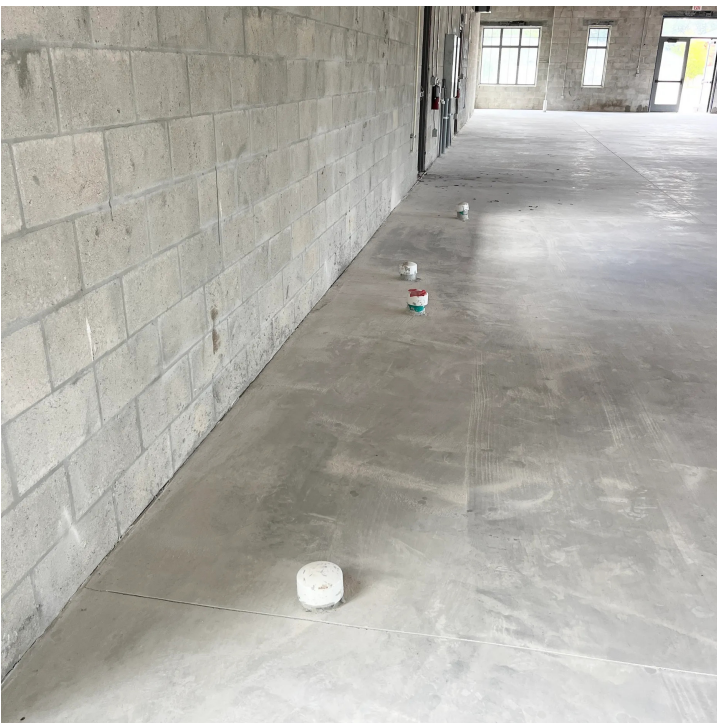
OFFICE BUILDING

For Lease

ADDITIONAL PHOTOS

16616 SUNRISE LAKES , CLERMONT, FL 34714

Building 5 - Sunrise Med:



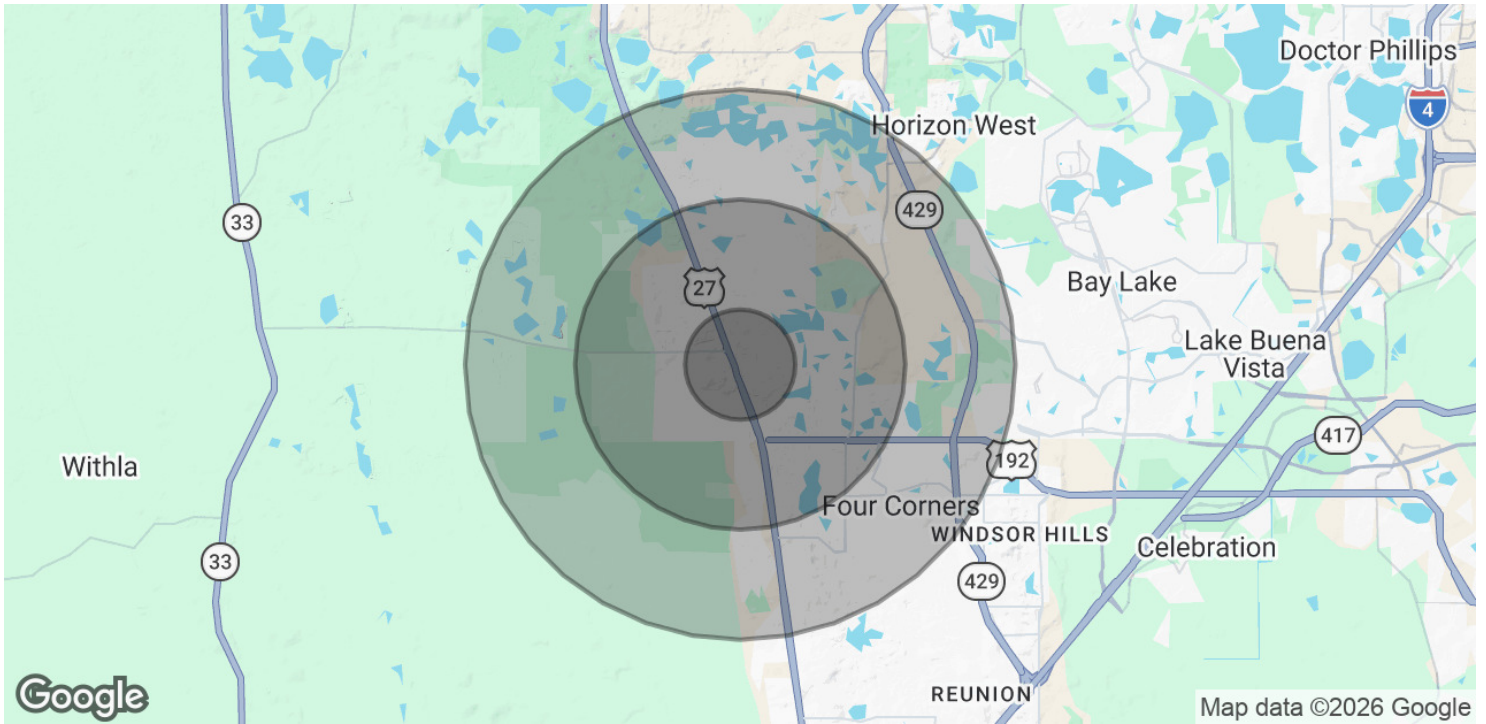
PRESENTED BY
ASHLEY WALKER
407.430.3462
awalker@millenia-partners.com

OFFICE BUILDING
For Lease

DEMOGRAPHICS MAP & REPORT

16616 SUNRISE LAKES , CLERMONT, FL 34714

Building 5 – Sunrise Med:



POPULATION

	1 MILE	3 MILES	5 MILES
Total Population	14,503	37,423	64,648
Average Age	37	40	39
Average Age (Male)	37	40	39
Average Age (Female)	37	41	39

HOUSEHOLDS & INCOME

	1 MILE	3 MILES	5 MILES
Total Households	5,734	14,281	23,661
# of Persons per HH	2.5	2.6	2.7
Average HH Income	\$79,634	\$90,628	\$97,305
Average House Value	\$249,451	\$305,831	\$349,463

2020 American Community Survey (ACS)

PRESENTED BY
ASHLEY WALKER
 407.430.3462
 awalker@millenia-partners.com

OFFICE BUILDING
For Lease