

FOR SALE

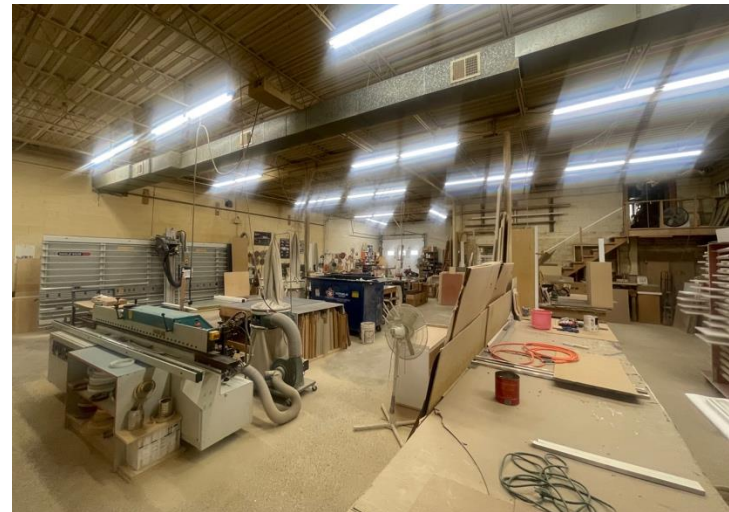
**±5,110 SF Building on ±9,597 SF Lot
Great End User Opportunity**

INDUSTRIAL

1450-1456 Hyde Park Avenue Boston



Very rarely does a small standalone industrial building become available in Boston, but after many years of occupancy by a successful cabinet designer/distributor, this “needle in a haystack” is for sale. Ideal for contractors, showrooms, academic groups, religious organizations, day care centers and really for businesses that run the economy’s gamut, it sits in a bustling commercial section of the city. After years of renting, consider optimizing your future via the various benefits of owning real estate.



@RedDomeRealty
r-dome.com

Field Office/Mailing Address:
100 Hancock Street
Suite 300
Quincy, MA 02171

Downtown Boston: 24 School Street

35 Partner Offices **NETWORK**

RED DOME
REALTY
— BOSTON —

COMMERCIAL BROKERAGE

PROPERTY MANAGEMENT & ADVISORY

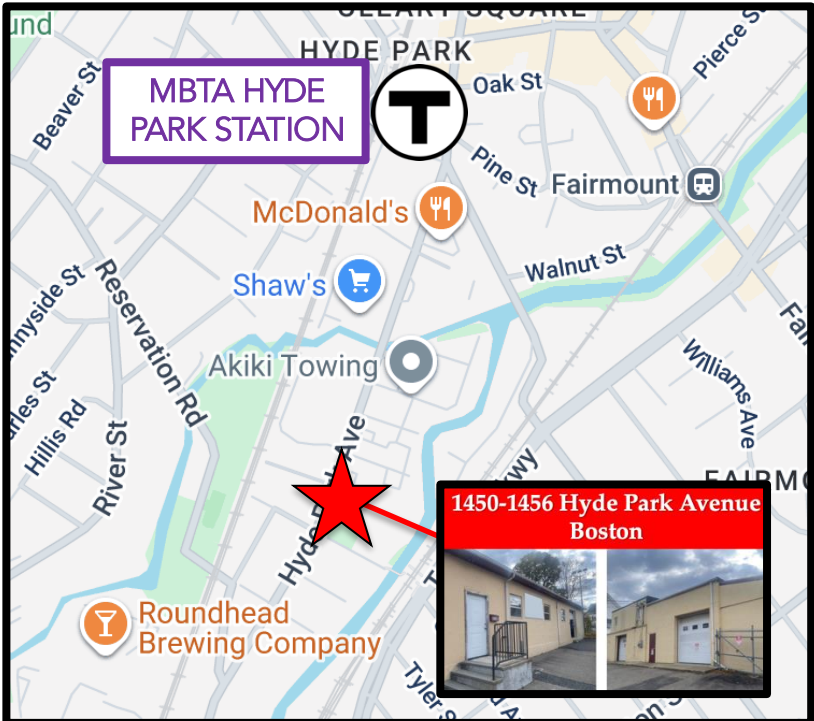
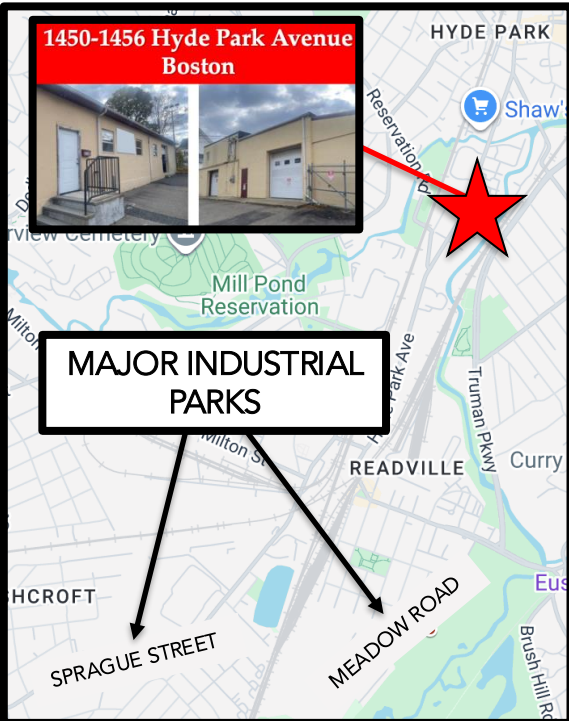
JP Plunkett | Principal
plunkett@r-dome.com
617.999.4993

David J. Anderson | Director
anderson@r-dome.com
617-240-5292

PROPERTY DETAILS

Loading	Two grade level loading doors and one elevated dock (±20 inches)
Construction	Concrete and stone
Ceiling Height	±14'
Roof	Rubber (circa 2015)
Heat	Gas heat
Real Estate Taxes	\$15,710 Fiscal Year 2024
Electrical System	Three phase, 110 volt power
Plumbing	Served by Boston Water & Sewer
Fire / Life Safety	Sprinkler system

NEIGHBORS INCLUDE



All material presented herein is for informational purposes only. Information is compiled from sources deemed reliable but is subject to errors, omissions, changes or withdrawal without notice. Red Dome LLC nor its affiliates assume any liability in any fashion at all.