



## 3029 S. Sherwood Forest Blvd

Baton Rouge, LA 70816

### Property Features

- 36,000 SF
- Ideal for Owner Occupant
- 144 Parking Spaces
- Great Location on S. Sherwood Forest Blvd
- Quick Access to I-12

### Asking Price:

**\$2,844,000**

**Ty Gose, CCIM**

Ty@latterblum.com  
225.295.0800

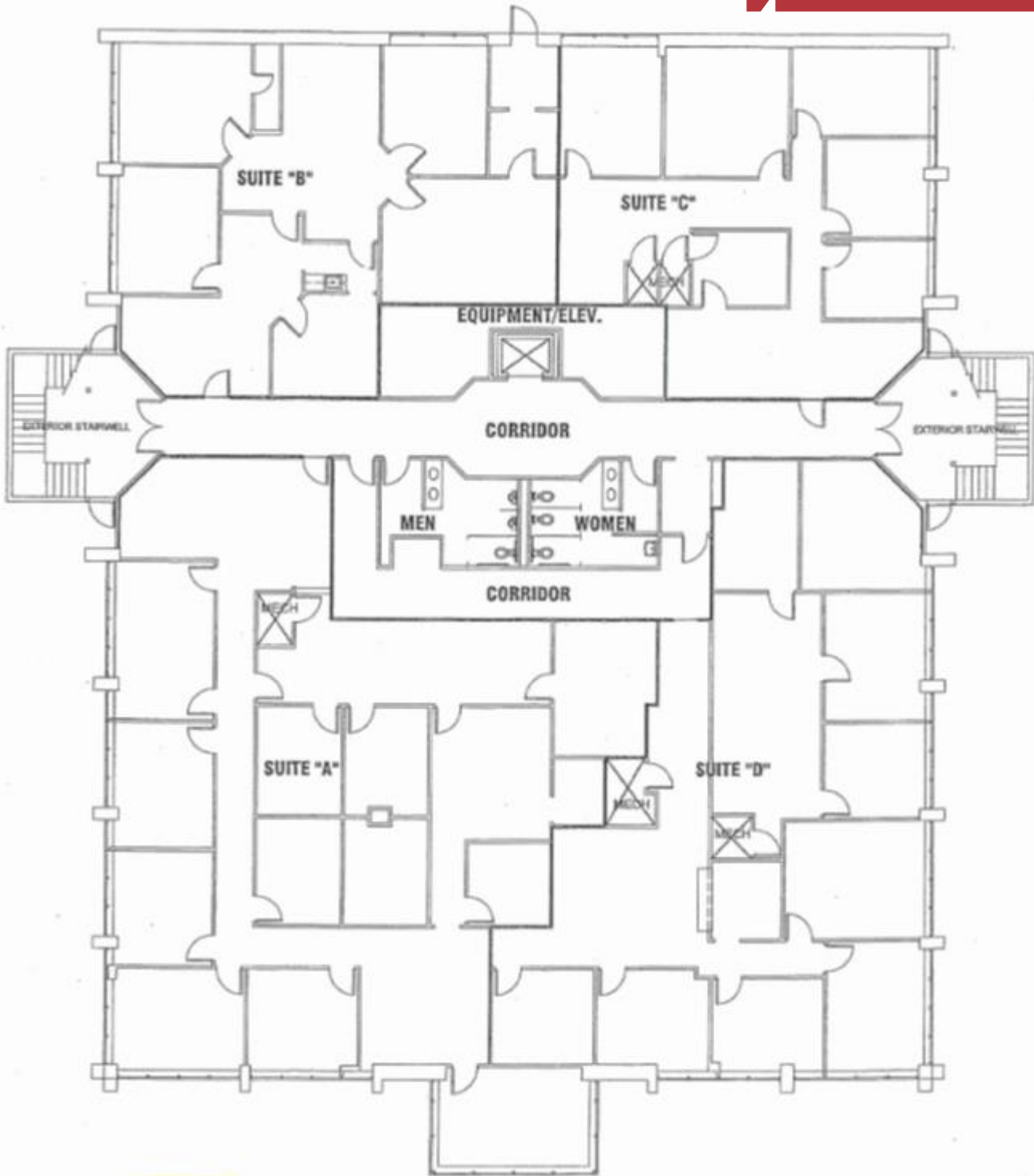
**Tim Smith**

Timsmith@latterblum.com  
225.315.9650

**Erin Caballero**

Erinc@latterblum.com  
225.241.6530

## 1st Floor



**Ty Gose, CCIM**

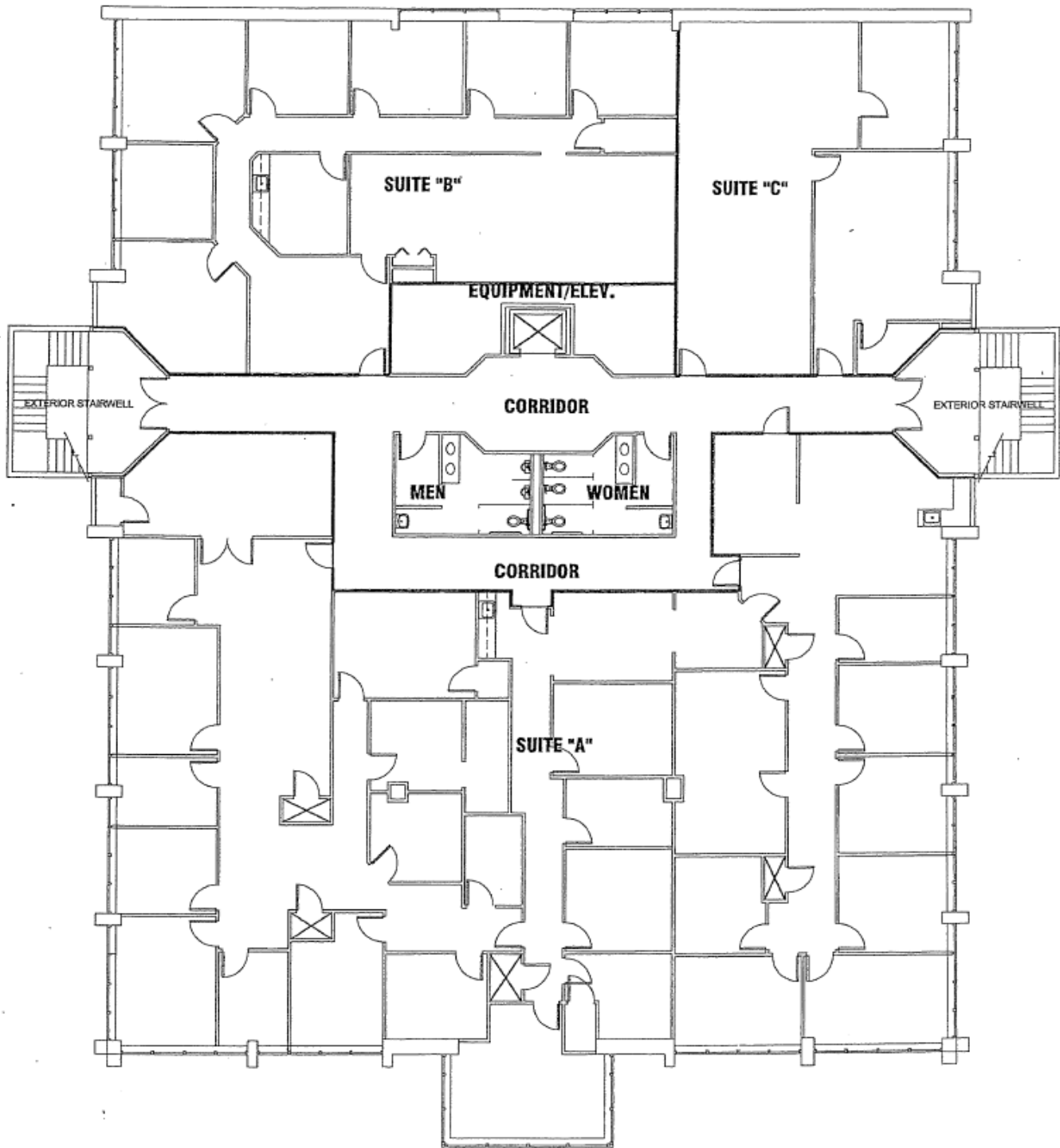
Ty@latterblum.com  
225.295.0800

**Tim Smith**

Timsmith@latterblum.com  
225.315.9650

**Erin Caballero**

Erinc@latterblum.com  
225.241.6530



**Ty Gose, CCIM**

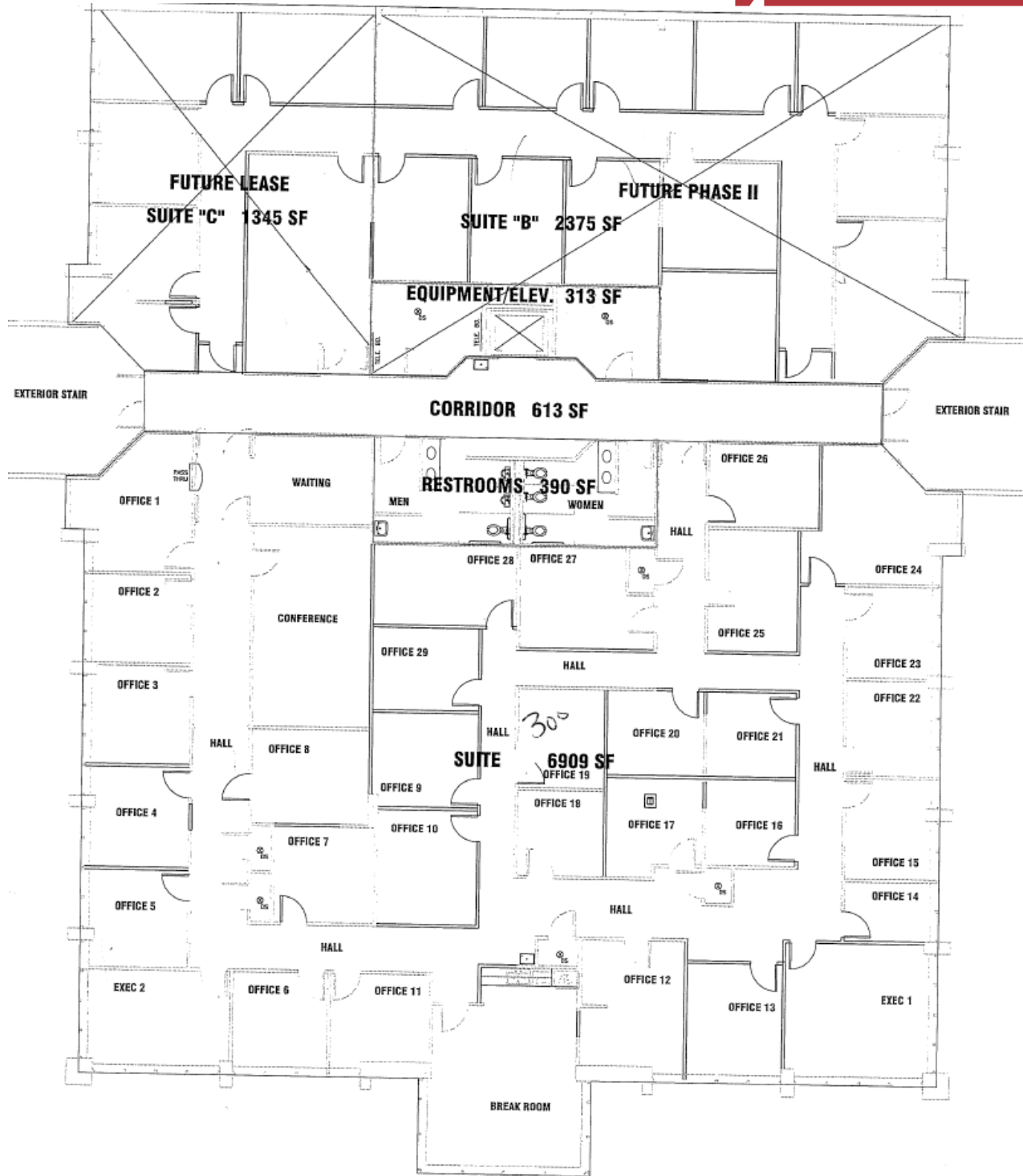
Ty@latterblum.com  
225.295.0800

**Tim Smith**

Timsmith@latterblum.com  
225.315.9650

**Erin Caballero**

Erinc@latterblum.com  
225.241.6530



**Ty Gose, CCIM**

Ty@latterblum.com  
225.295.0800

**Tim Smith**

Timsmith@latterblum.com  
225.315.9650

**Erin Caballero**

Erinc@latterblum.com  
225.241.6530



**Ty Gose, CCIM**

Ty@latterblum.com  
225.295.0800

**Tim Smith**

Timsmith@latterblum.com  
225.315.9650

**Erin Caballero**

Erinc@latterblum.com  
225.241.6530

LICENSED IN LOUISIANA. NO WARRANTY OR REPRESENTATION, EXPRESS OR IMPLIED, IS MADE AS TO THE ACCURACY OF THE INFORMATION CONTAINED HEREIN, AND THE SAME IS SUBMITTED SUBJECT TO ERRORS, OMISSIONS, CHANGE OF PRICE, RENTAL OR OTHER CONDITIONS, PRIOR SALE, LEASE OR FINANCING, OR WITHDRAWAL WITHOUT NOTICE, AND OF ANY SPECIAL LISTING CONDITIONS IMPOSED BY OUR PRINCIPALS NO WARRANTIES OR REPRESENTATIONS ARE MADE AS TO THE CONDITION OF THE PROPERTY OR ANY HAZARDS CONTAINED THEREIN ARE ANY TO BE IMPLIED. CREATED ON:

5/11/2016

10455 Jefferson Highway, Suite 200  
Baton Rouge, LA 70809 USA  
225.295.0800  
[www.latterblum.com](http://www.latterblum.com)