

BACHMAN & ASSOCIATES

REAL ESTATE

103 W RYUS AVENUE

LA VETA, COLORADO
COMMERCIAL › \$1,750,000



for more details

- › 14,002 TOTAL SQ FT
- › HOTEL LODGING
- › RESTAURANT / BAR

AMERICAN
FARM + RANCH

222 S MAIN STREET, LA VETA › DISCOVERBACHMAN.COM › 719-330-7235

ANNALEE HICKEY, OWNER / MANAGING BROKER

Annalee@BachmanAndAssociates.com





scan for
more details

Key Features:

- › 14,002 Total Sq. Ft.
- › Historic Hotel
- › Restaurant/Bar
 - › Courtyard
- › Manager Apartment
- › Within Downtown
- › 2025 Taxes: \$18,260.38
- › Water / Sewer: City
- › Large Rooms with Kitchenettes
- › Standard / Suite Hotel Rooms
- › Parking Off Main Street
- › Located Next to Shops & Art Galleries





RIGHT IN THE HEART OF DOWNTOWN LA VETA!

Encompassing a substantial footprint at an exceptional price per square foot, this fully turn-key historic hotel complex has been thoughtfully developed to offer multiple revenue streams under one roof. The property includes: Interior guest rooms with classic hotel charm A large private suite ideal for premium bookings or owner occupancy- Courtyard-facing rooms, many equipped with full kitchenettes -- perfect for extended-stay guests or future condo conversion- A spacious apartment, ideal for an on-site manager, long-term tenant, or owner's residence- A fully appointed bar and restaurant, ready to serve -- no buildout required. A pool room and additional common areas that give this property a social energy few commercial assets can match This isn't a shell. It's a living, breathing hospitality asset with infrastructure, character, and bones that would cost a fortune to replicate!

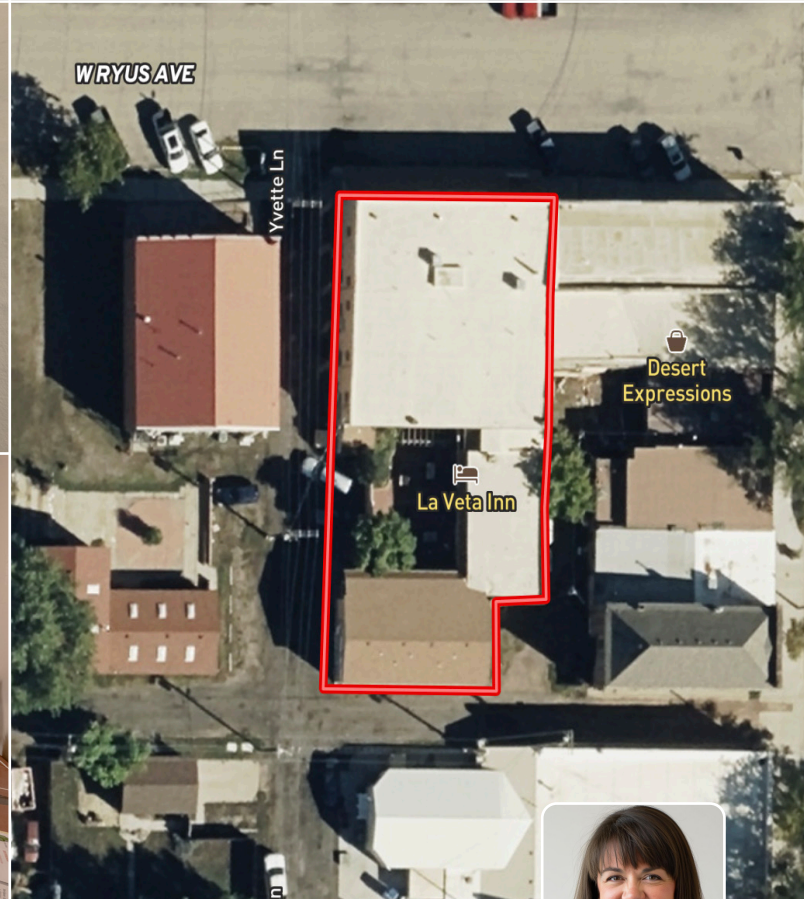
103 W RYUS AVENUE

LA VETA, COLORADO

\$1,750,000 · COMMERCIAL

BACHMAN & ASSOCIATES

REAL ESTATE



ANNALEE HICKEY, OWNER / MANAGING BROKER

Annalee@BachmanAndAssociates.com

222 S MAIN STREET, LA VETA · DISCOVERBACHMAN.COM · 719-330-7235