

FORMER VOXLAND ELECTRIC

2600 12TH AVE S, MOORHEAD, MN 56560


GOLDMARK™
COMMERCIAL REAL ESTATE INC

FOR SALE



MOORHEAD OFFICE/SHOP SPACE

Building Size: 3,916 SF

Lot Size: 16,123 SF

Price: \$375,000

Aaron Hill | 701.893.2827
aaron@goldmarkcommercial.com
Goldmark Commercial Real Estate
www.goldmarkcommercial.com

FORMER VOXLAND ELECTRIC

2600 12TH AVE S, MOORHEAD, MN 56560



BUILDING SIZE

Total: 3,916 SF
Office: 900 SF (approx)
Shop/garage: 3,000 SF

PRICE

\$375,000

PARCEL NUMBER

58-532-0240

LOT SIZE

16,123 SF (0.37 acres)

YEAR BUILT

1958 w/ recent garage addition

2025 TAXES

\$3,846

SPECIALS BALANCE

\$276.48

ZONING

Community Commercial

PROPERTY DESCRIPTION:

Positioned in a highly accessible and growing area of Moorhead, this property a prime opportunity for an owner-occupant looking for strong visibility and long-term potential. Located on the intersection of Main Avenue SE and 12th St., this property offers quick and easy access to I-94. This well-located asset combines functionality, exposure, and future upside in one of the region's most active corridors.

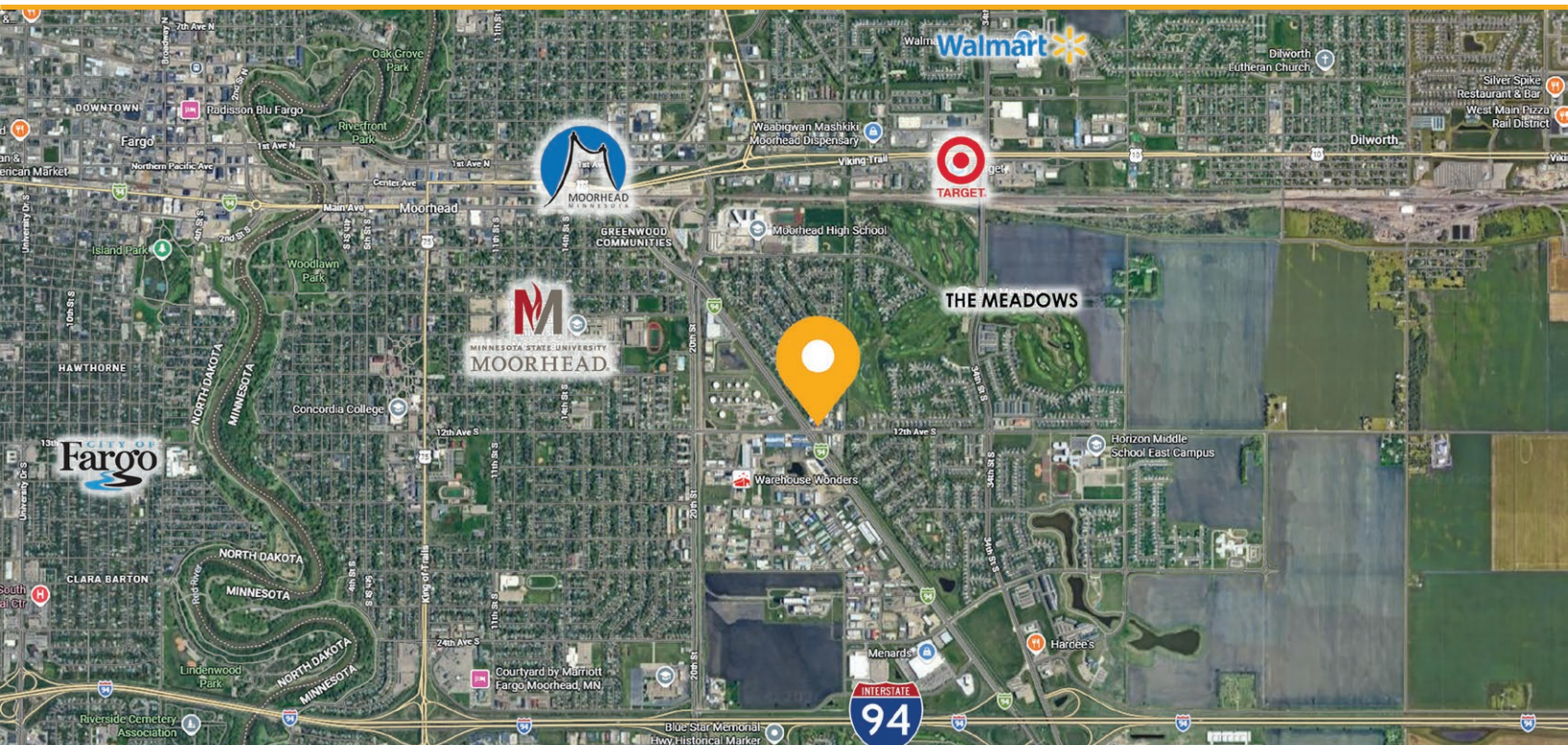
KEY FEATURES:

- Prime location with great visibility
- Good access and high traffic counts
- Flexible zoning in an established and growing development

NEIGHBORS:

- Kiwk Trip
- Moorhead Youth Hockey
- Meadows Golf Course
- Menards
- Moorhead High School
- MSUM

This information has been secured from sources we believe to be reliable, but we make no representation or warranties, expressed or implied, as to the accuracy of the information. Interested parties should conduct their own independent investigations and rely only on those results.

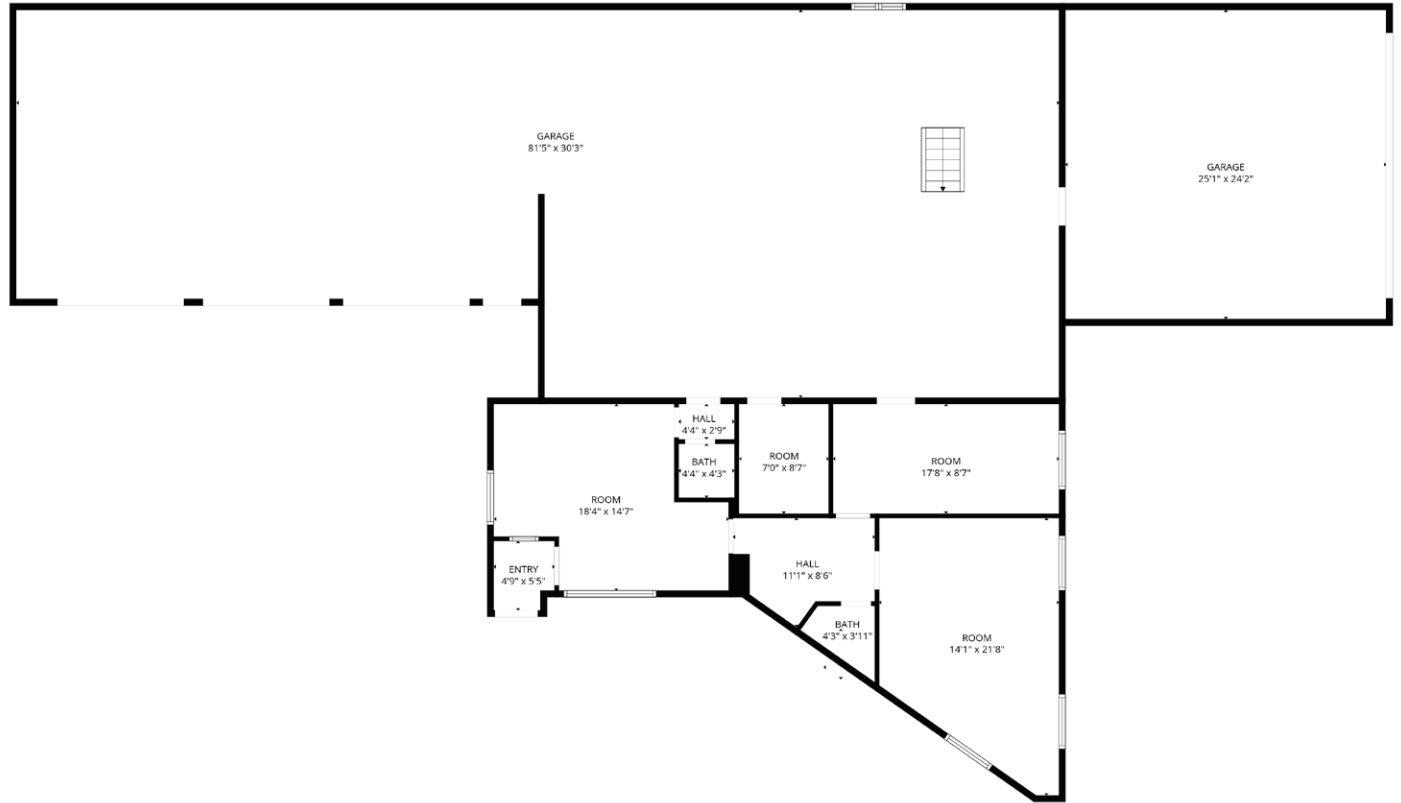


FORMER VOXLAND ELECTRIC

2600 12TH AVE S, MOORHEAD, MN 56560



FLOORPLAN



FORMER VOXLAND ELECTRIC

2600 12TH AVE S, MOORHEAD, MN 56560

GOLDMARK[™]
COMMERCIAL REAL ESTATE INC

PHOTOS

