



4949 Forest Street, Downers Grove, IL

DOWNTOWN DOWNERS GROVE OFFICE FOR LEASE



2,100 SF

2nd Floor Office

Oversized Windows

Loft Style Ceilings

Wood Flooring

On Site Parking

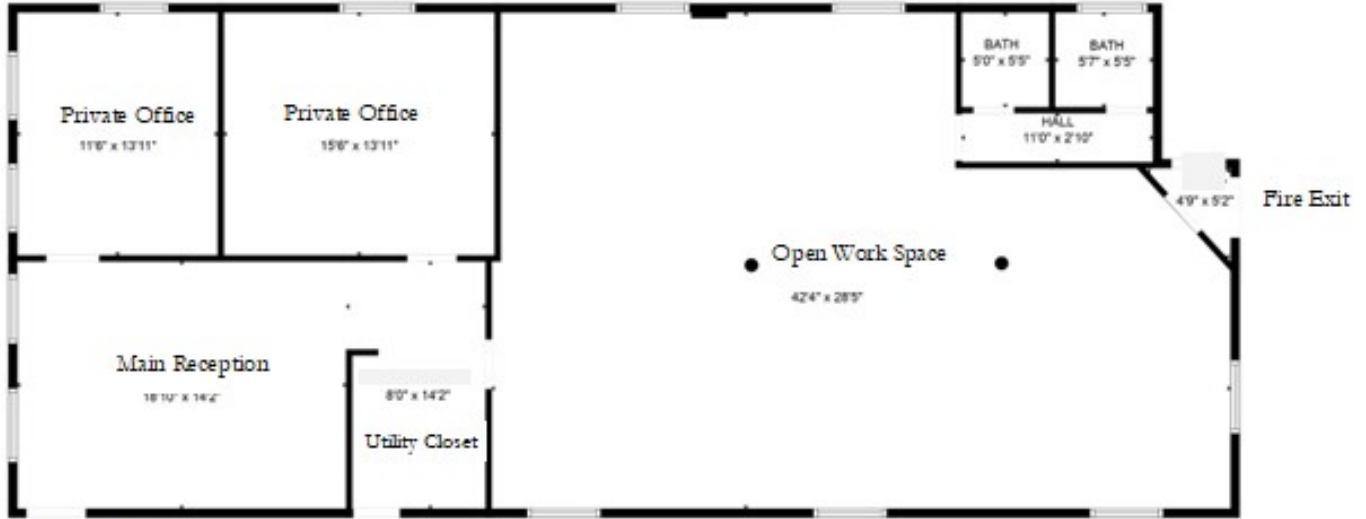
Steps To Metra Train



Theresa Schulz
tschulz@schulzproperties.com
www.schulzproperties.com

Layout Plan

Suite 200 2,100 Square Feet



Main Entrance

