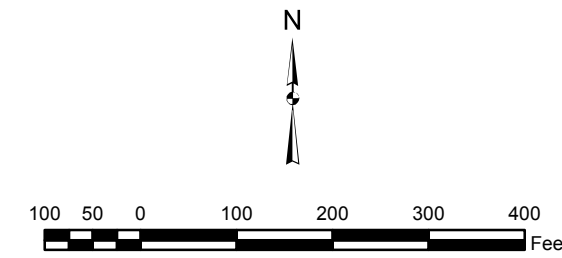


A Fairfax County, Virginia Publication



Map file is 50" X 75" based on USGS 1:24,000 scale 7 1/2 minute Quad, Virginia Coordinate System values are of 1983 North Zone in U.S. feet based on NAD 83/93 High Precision GPS Network Adjustment.

National Geodetic Vertical Datum 1929

Legend

Sanitary Sewer - Structures

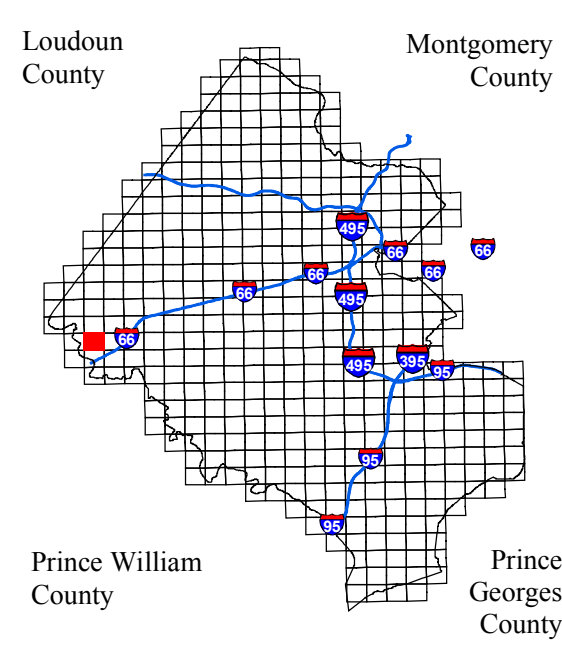
- Structure Type**
- Chambers
 - Clean Outs
 - ▲ Grinder Pump
 - Holding Tank
 - In-line Flushing
 - Lamp Hole
 - Meter
 - Odor Control Facility
 - Pump Station
 - ▲ Reducer
 - Siphon Inlet
 - Standard Manhole
 - Stub
 - Terminal Flushing
 - Treatment Plant
 - ▲ Valve

Sanitary Sewer - Sewerlines

Line Type, Jurisdiction

- Force Main, County of Fairfax
- Gravelly Lines, County of Fairfax
- Pressure Sewer, County of Fairfax
- Siphon, County of Fairfax
- Water Reuse, County of Fairfax
- Force Main, Non County
- Gravelly Lines, Non County
- Pressure Lines, Non County
- Non Active Lines
- Encasements

The information contained on this page is NOT to be construed or used as a "legal description". It is not a survey product. Any determination of topography or contours, or any depiction of physical improvements, property lines or boundaries is for general information only and shall not be used for the design, modification, or construction of improvements to real property or for flood plain determination. While Fairfax County strives to provide the best data possible, it does not provide any guarantee of accuracy or completeness regarding the map information. Any errors or omissions should be reported to the Fairfax County Geographic Information Systems and Mapping Services Branch of the Department of Information Technology. In no event will Fairfax County be liable for any damages, including but not limited to loss of data, lost profits, business interruption, loss of business information or any other pecuniary loss that might arise from the use of this map or information it contains.



ADMINISTRATIVE INDEX

52-4	53-3	53-4
63-2	64-1	64-2
63-4	64-3	64-4

SHEET INDEX

SANITARY SEWER

64-1

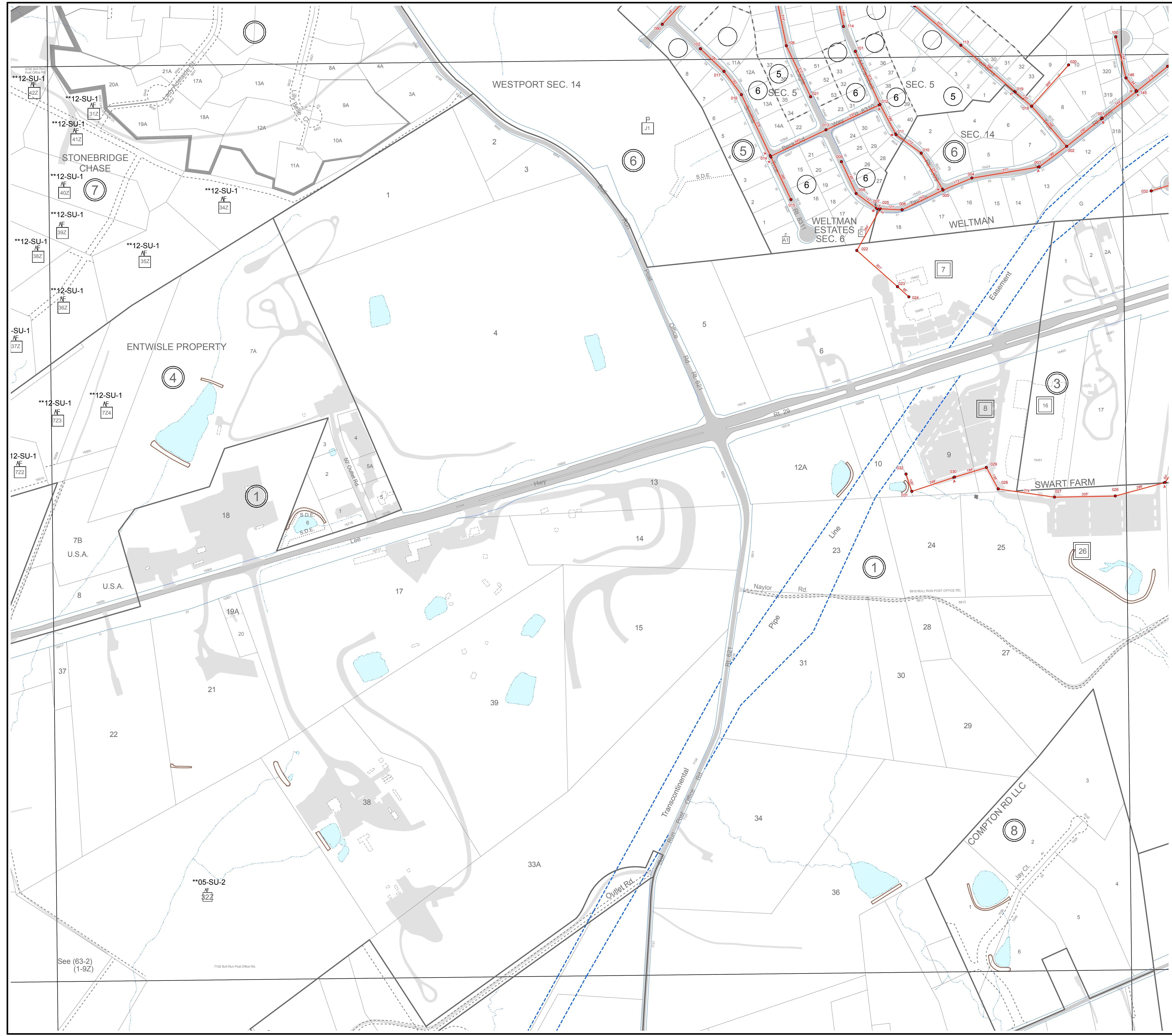
Revised to : 01 - 02 - 2019

Prepared by:
 DEPARTMENT OF INFORMATION TECHNOLOGY
 Enterprise Services Division
 Geographic Information Services
 12000 Government Center Parkway, Suite 117
 Fairfax, Virginia 22035-0010
 (703) 324-2712
 FAX (703) 324-3937

DEPARTMENT OF PUBLIC WORKS
 & ENVIRONMENTAL SERVICES
 Wastewater Planning & Monitoring Division
 12000 Government Center Parkway, Suite 358
 Fairfax, Virginia 22035-0058
 (703) 324-5030
 FAX (703) 803-3297

© THE COUNTY OF FAIRFAX

Print Date 03 Jan 2019



See (63-2) (1-9Z)

7102 Bull Run Post Office Rd