

CAMP CREEK BUSINESS CENTER

3800 Camp Creek Pkwy, Building 2400, Atlanta, GA 30331

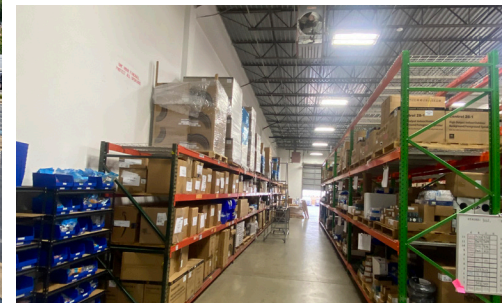

TRANSWESTERN
REAL ESTATE
SERVICES

INDUSTRIAL SUBLEASE

TERM UNTIL
MAY 31, 2027

5,900 SF

SUITE #118



HIGHLIGHTS

- **5,900 SF Available**
- **Office Size:**
1,212
- **Warehouse Size:**
4,688 SF
- **Term Until**
May 31, 2027
- **Rate:** Inquire
- **2 Dock High Doors**
- **20' Clear Ceiling Height**
- **Rear Load Distribution**
- **Roughly 8 miles from**
major highways such
as I-85, I-285, and I-75.
- **Easy access to**
Hartsfield-Jackson
Atlanta International Airport



LEASING INFORMATION

AUSTIN HIBBARD

Vice President
404.814.1525
austin.hibbard@transwestern.com

CHARLOTTE EVANS

Business Analyst
404.842.6507
charlotte.evans@transwestern.com

The information provided herein was obtained from sources believed reliable; however, Transwestern makes no guarantees, warranties or representations as to the completeness of accuracy thereof. The presentation of this property is submitted subject to errors, omissions, change of price or conditions, prior to sale or lease, or withdrawal without notice. Copyright © 2025 Transwestern.

CAMP CREEK BUSINESS CENTER

3800 Camp Creek Pkwy, Building 2400, Atlanta, GA 30331



INDUSTRIAL SUBLEASE

TERM UNTIL
MAY 31, 2027

5,900 SF

SUITE #118



LEASING INFORMATION

AUSTIN HIBBARD

Vice President
404.814.1525
austin.hibbard@transwestern.com

CHARLOTTE EVANS

Business Analyst
404.842.6507
charlotte.evans@transwestern.com

The information provided herein was obtained from sources believed reliable; however, Transwestern makes no guarantees, warranties or representations as to the completeness of accuracy thereof. The presentation of this property is submitted subject to errors, omissions, change of price or conditions, prior to sale or lease, or withdrawal without notice. Copyright © 2025 Transwestern.

CAMP CREEK BUSINESS CENTER

3800 Camp Creek Pkwy, Building 2400, Atlanta, GA 30331

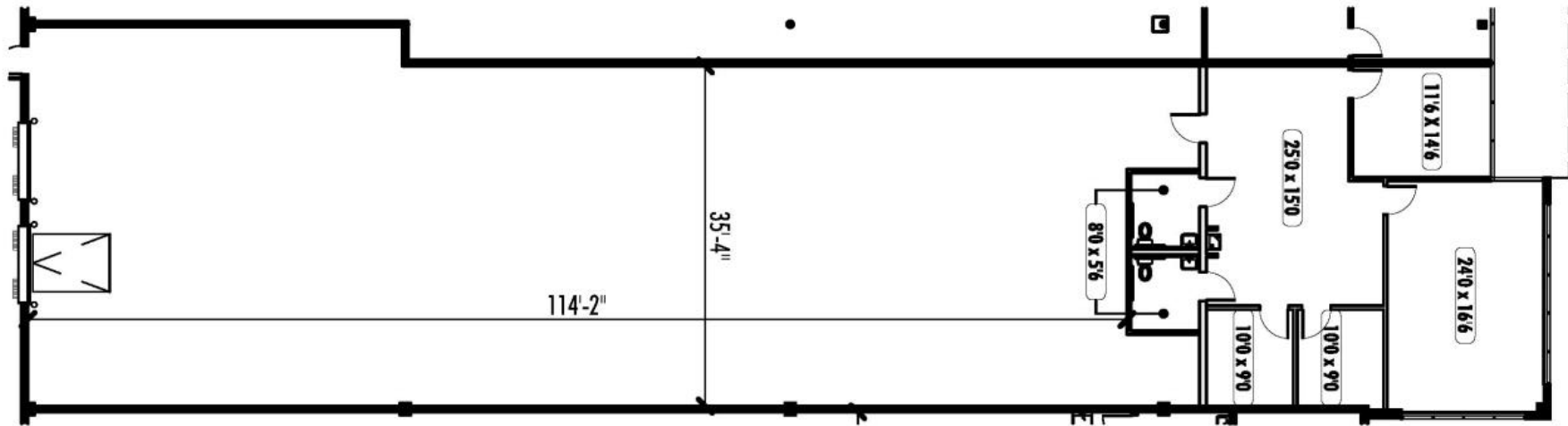
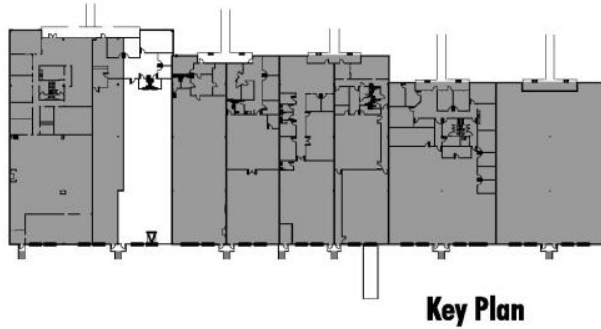
TRANSWESTERN
REAL ESTATE
SERVICES

INDUSTRIAL SUBLEASE

TERM UNTIL
MAY 31, 2027

5,900 SF

SUITE #118



LEASING INFORMATION

AUSTIN HIBBARD

Vice President
404.814.1525
austin.hibbard@transwestern.com

CHARLOTTE EVANS

Business Analyst
404.842.6507
charlotte.evans@transwestern.com

The information provided herein was obtained from sources believed reliable; however, Transwestern makes no guarantees, warranties or representations as to the completeness of accuracy thereof. The presentation of this property is submitted subject to errors, omissions, change of price or conditions, prior to sale or lease, or withdrawal without notice. Copyright © 2025 Transwestern.