

# FOR LEASE

## MOBILE COMMERCE PARK

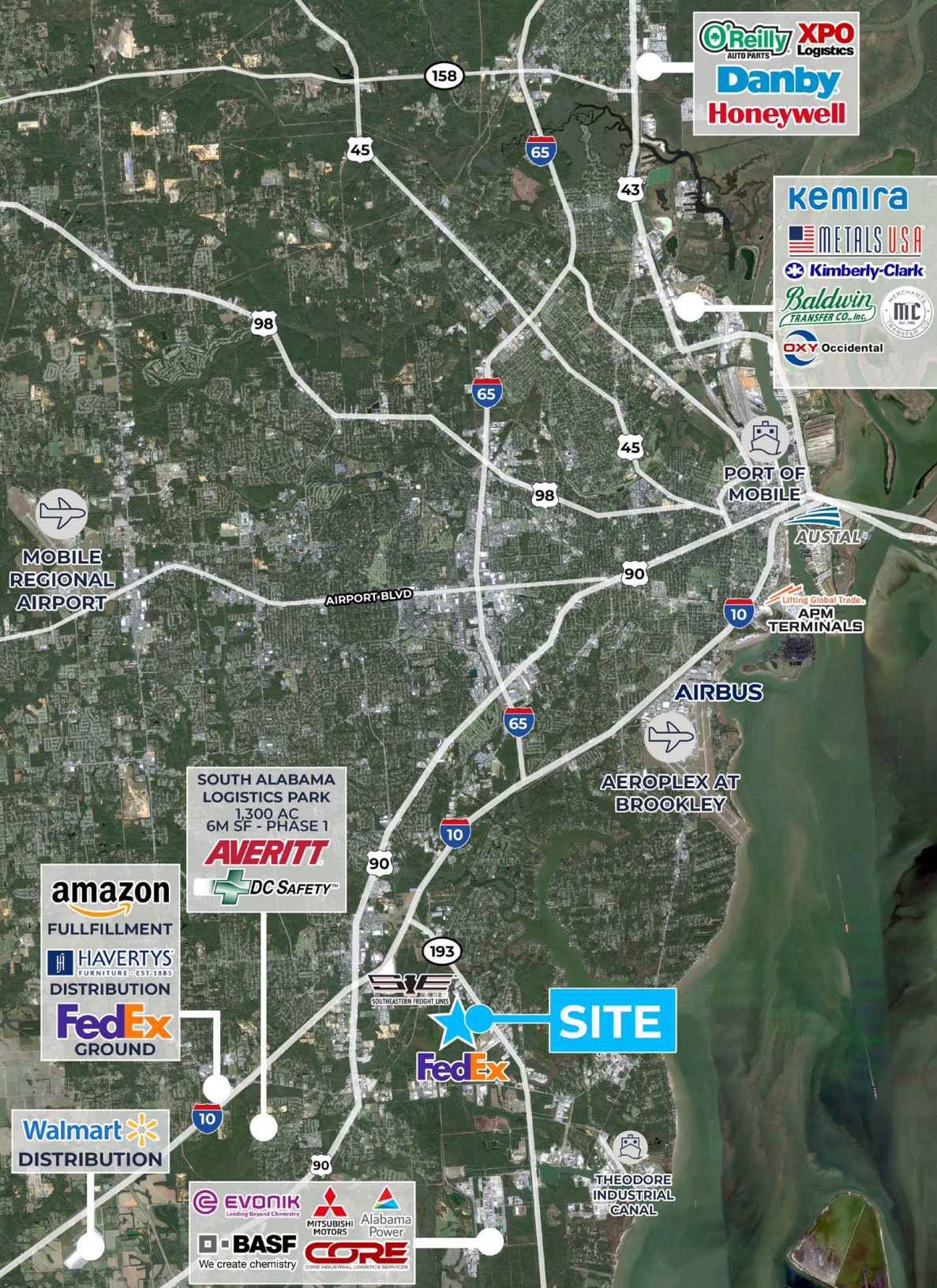
23,000 SF OFFICE/WAREHOUSE  
5640 Commerce Blvd. E. | Mobile, AL



**Pete Riehm, SIOR**  
251.442.4349  
priehm@cre-mobile.com



**CRE  
MOBILE**  
CRE-MOBILE.COM



# FOR LEASE

5640 Commerce Blvd. E. | Mobile



## PROPERTY SIZE

23,000± SF building  
5,400± SF office  
17,600± SF warehouse



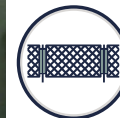
## ZONING

B-5: Office Distribution



## DOORS

2 ground level doors  
3 dock high doors



## YARD

1± AC fenced yard



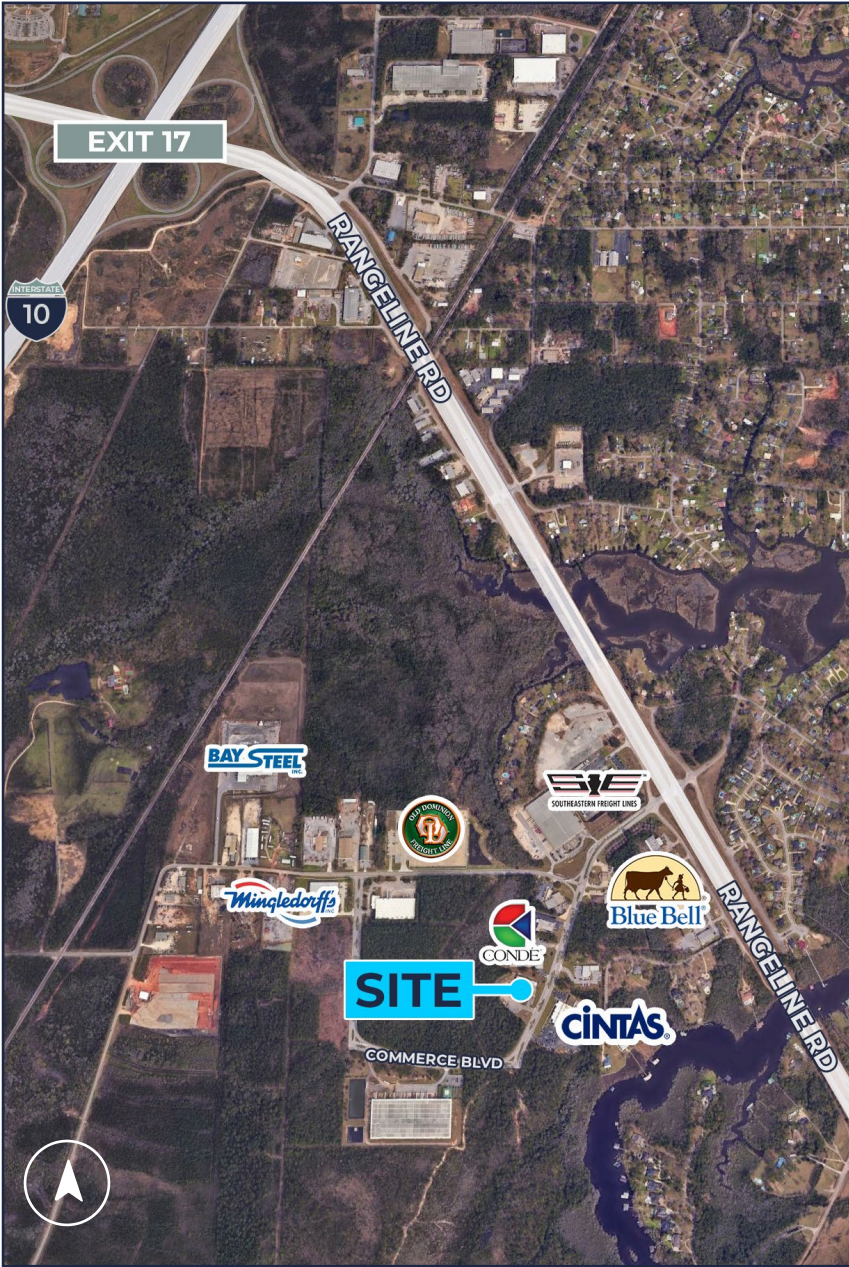
## EAVE HEIGHT

20'



## PRICE

LEASE RATE: \$10.00/SF NNN



## DISTANCES TO NOTABLE LOCATIONS

<b>I-10</b>	<b>1.8 MILES</b>
<b>HIGHWAY 90</b>	<b>3 MILES</b>
<b>I-65</b>	<b>4.5 MILES</b>
<b>DOWNTOWN MOBILE AIRPORT</b>	<b>9.5 MILES</b>
<b>PORT OF MOBILE</b>	<b>11.5 MILES</b>
<b>BALDWIN COUNTY</b>	<b>19 MILES</b>

NO WARRANTY OR REPRESENTATION, EXPRESS OR IMPLIED, IS MADE AS TO THE ACCURACY OF THE INFORMATION CONTAINED HEREIN, AND THE SAME IS SUBMITTED SUBJECT TO ERRORS, OMISSIONS, CHANGE OF PRICE, RENTAL OR OTHER CONDITIONS, PRIOR SALE, LEASE OR FINANCING, OR WITHDRAWAL WITHOUT NOTICE, AND OF ANY SPECIAL LISTING CONDITIONS IMPOSED BY OUR PRINCIPALS. NO WARRANTIES OR REPRESENTATIONS ARE MADE AS TO THE CONDITION OF THE PROPERTY NOR ANY HAZARDS CONTAINED THEREIN ARE ANY TO BE IMPLIED.



## Property Location

Located in Mobile Commerce Park with easy access to I-10 via Exit 17 and Exit 15.



## Conveniently Located

Immediate area features a variety of light industrial.

NO WARRANTY OR REPRESENTATION, EXPRESS OR IMPLIED, IS MADE AS TO THE ACCURACY OF THE INFORMATION CONTAINED HEREIN, AND THE SAME IS SUBMITTED SUBJECT TO ERRORS, OMISSIONS, CHANGE OF PRICE, RENTAL OR OTHER CONDITIONS, PRIOR SALE, LEASE OR FINANCING, OR WITHDRAWAL WITHOUT NOTICE, AND OF ANY SPECIAL LISTING CONDITIONS IMPOSED BY OUR PRINCIPALS. NO WARRANTIES OR REPRESENTATIONS ARE MADE AS TO THE CONDITION OF THE PROPERTY NOR ANY HAZARDS CONTAINED THEREIN ARE ANY TO BE IMPLIED.

