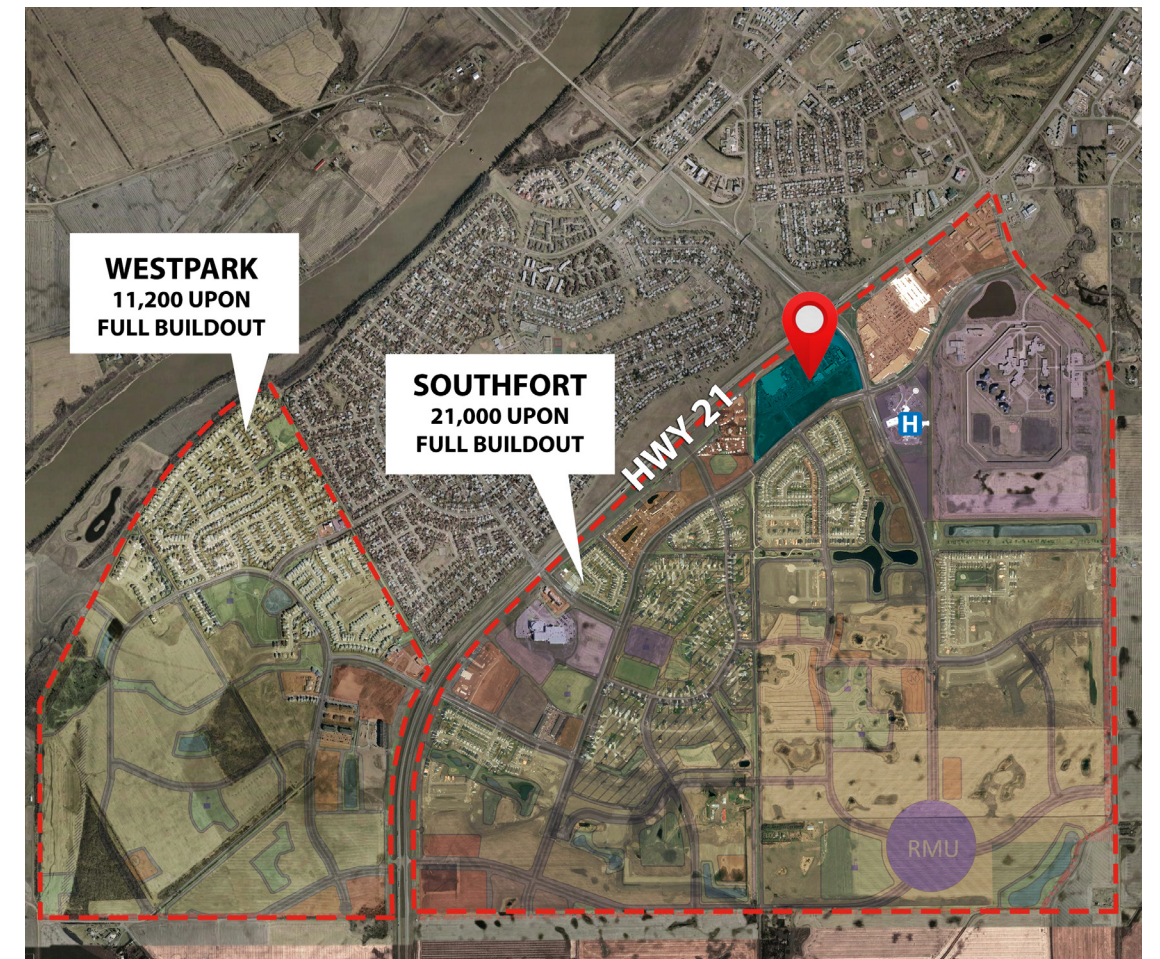
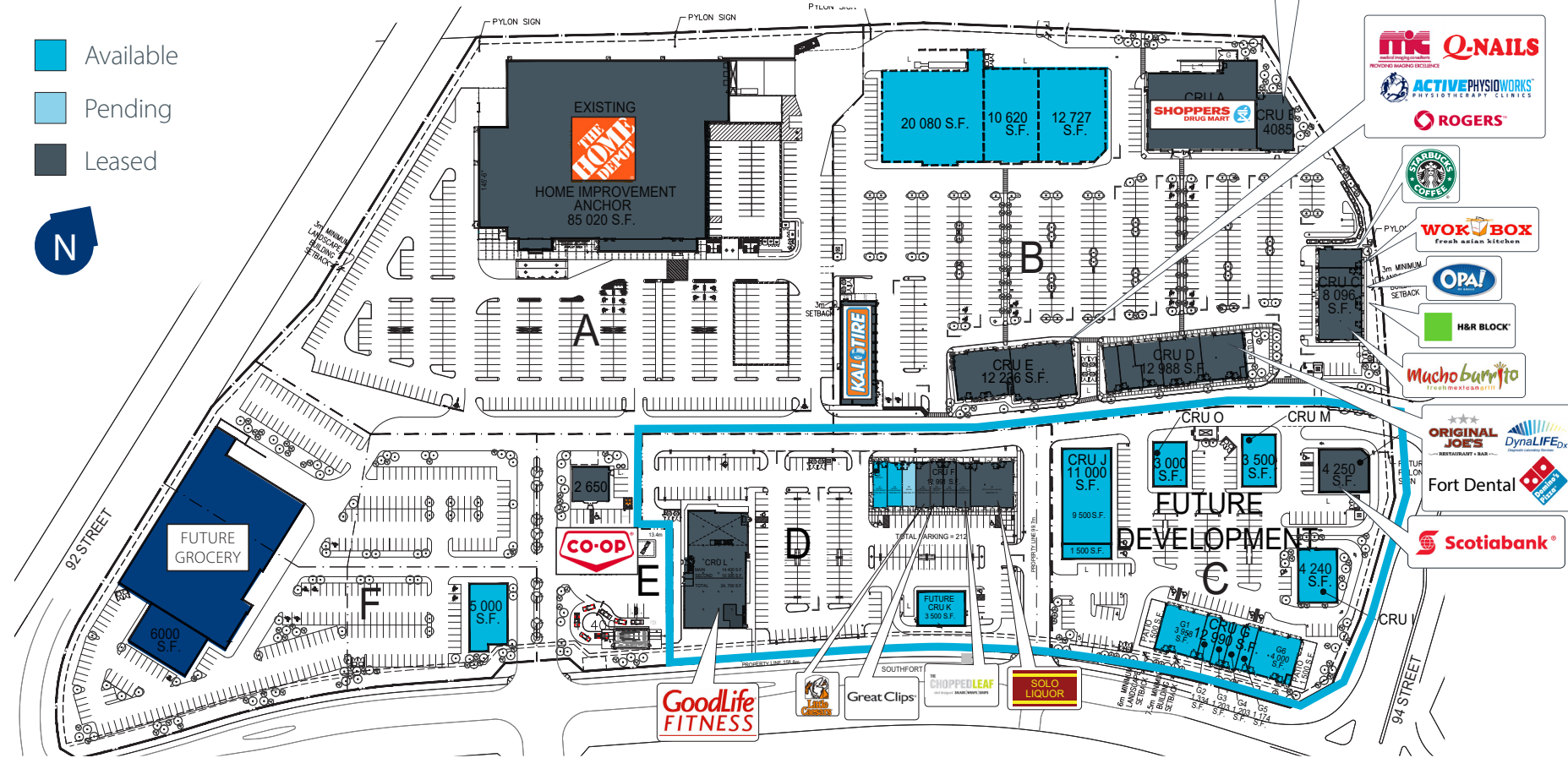


Site Plan

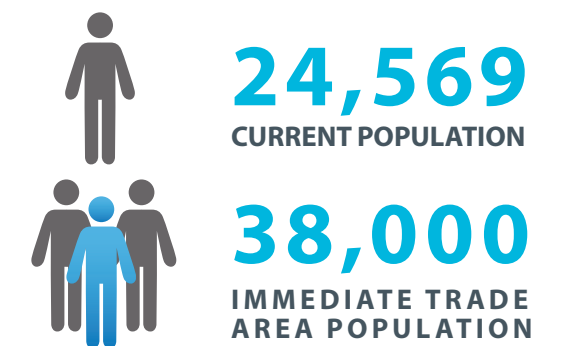
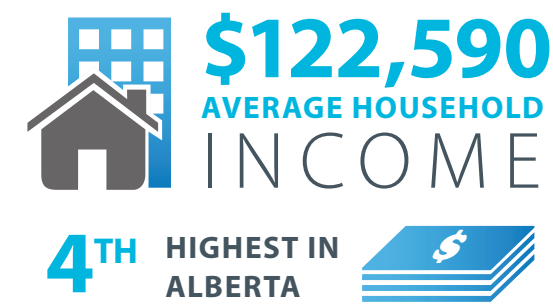


Property Details

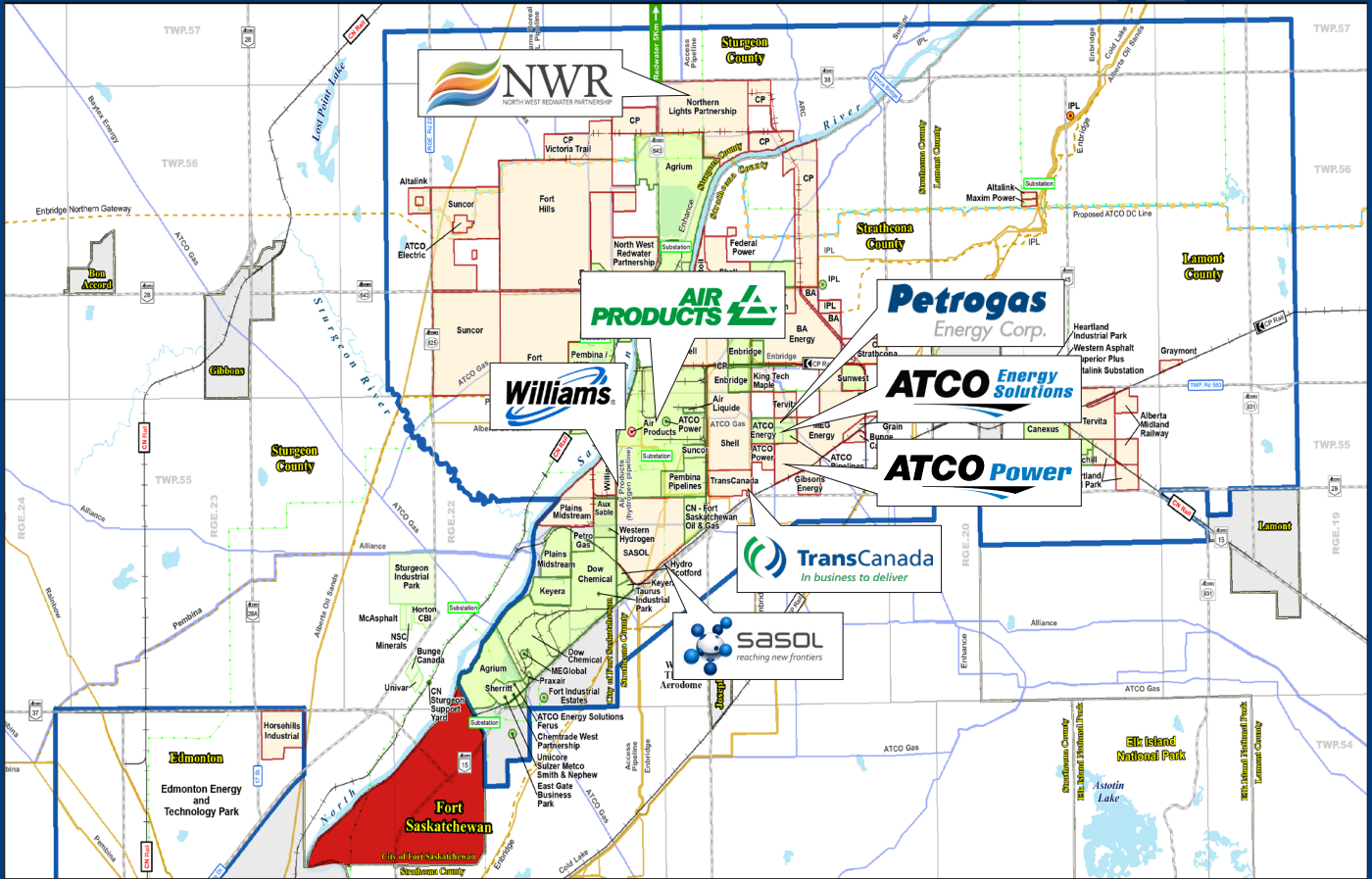
- SouthPointe is located at the southwest corner of Highway 21 and Highway 15, which is the most heavily travelled intersection in Fort Saskatchewan, with combined traffic counts of 83,680 vehicles per day (2016)
- Join Home Depot, Shoppers Drug Mart, Starbucks, Original Joe's, Mucho Burrito, OPA!, DynaLife DX, GoodLife Fitness and others
- Tenants in the immediate area include No Frills, Wal-Mart, Canadian Tire, Safeway with a total combined retail drawing power of over 380,000 square feet



About Fort Saskatchewan



Alberta's Industrial Heartland



MAJOR INVESTMENT ANNOUNCEMENTS

NORTH WEST REDWATER PARTNERSHIP Bitumen Refinery	\$8.5 billion (phase 1)	KEYERA Fractionation Capacity Expansion	\$220 million
WILLIAMS ENERGY Off-Gas Pipeline and Fractionization Propylene PDH facility	\$500 million \$900 million (estimate)	CARBON CAPTURE AND STORAGE PROJECTS Shell Quest Enhance Energy	\$1.3 billion
PEMBINA PIPELINES NGL Fractionization Expansion Heartland Hub Logistic Center	\$460 million \$250 million	ENBRIDGE Northern Gateway Pipelines	\$6 billion
SASOL Gas to Liquids Facility	\$12.5 billion (estimate)	TRANSCANADA Grand Rapids Pipeline	\$3 billion
MEG ENERGY "Hi - Q" Test Facility (3,000 bpd)	\$125 million	ATCO POWER Natural Gas Power Generation	\$800 million
		AIR PRODUCTS Hydrogen Production Facility	\$300 million

\$32 BILLION (TO DATE)
\$15+ BILLION (PENDING OR UNDERWAY)



Intelligent
Real Estate
Solutions



avisonyoung.com

©2017 Avison Young Real Estate Alberta Inc. All rights reserved.

The information contained herein was obtained from sources deemed to be reliable and is believed to be true; it has not been verified and as such, cannot be warranted nor form any part of any future contract. Date of publication: October 18, 2017