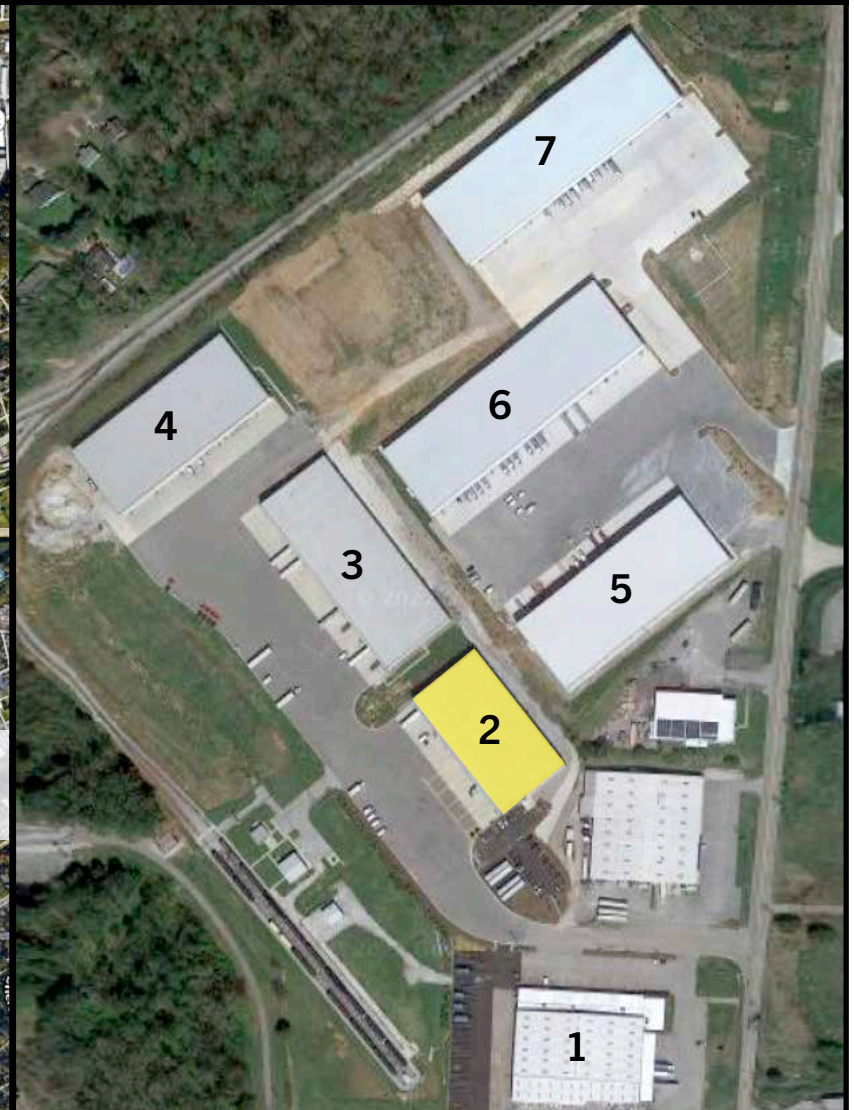
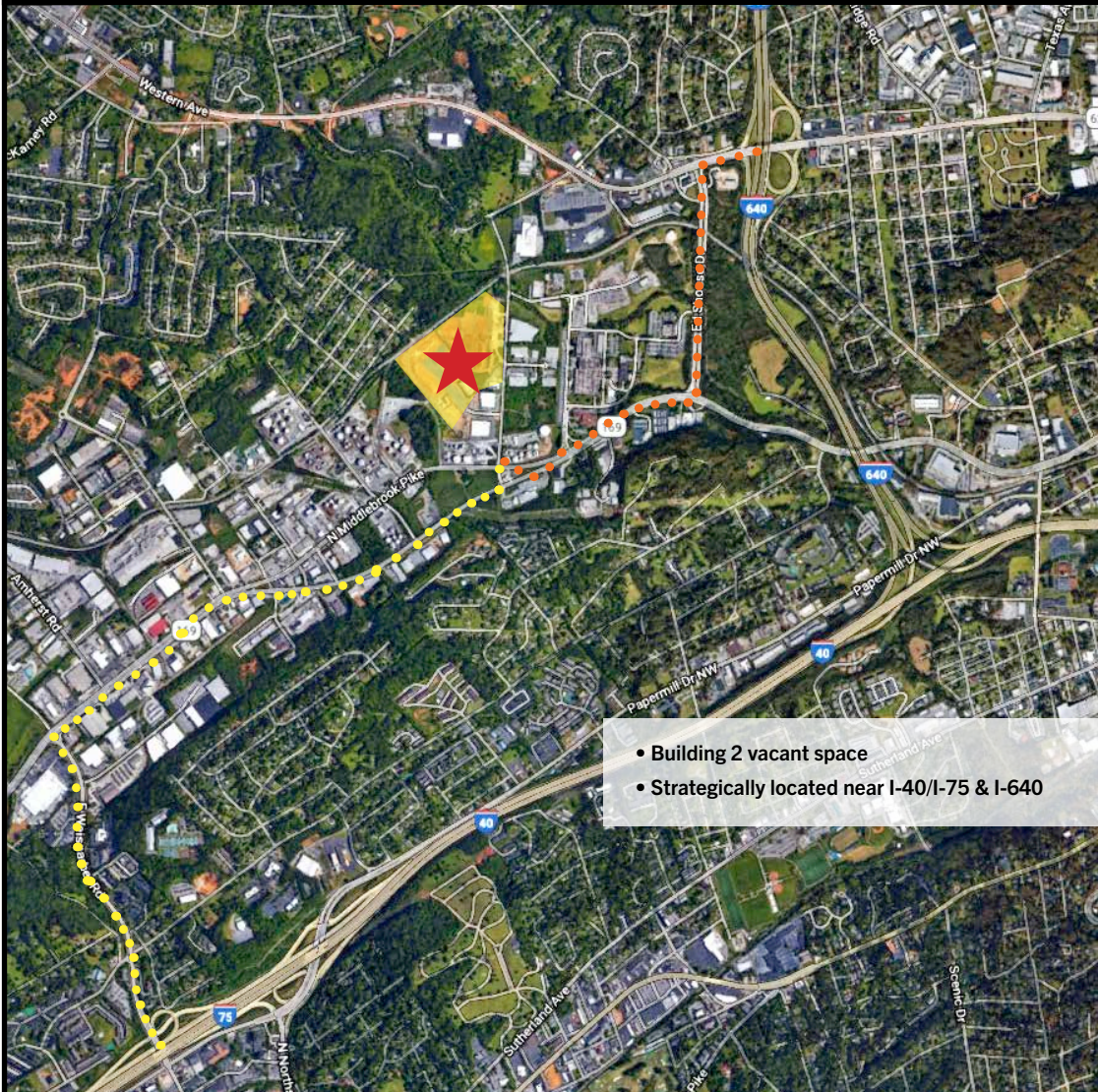


Fiser, inc.

fiserinc.com

3CREEK
Warehouse | Distribution

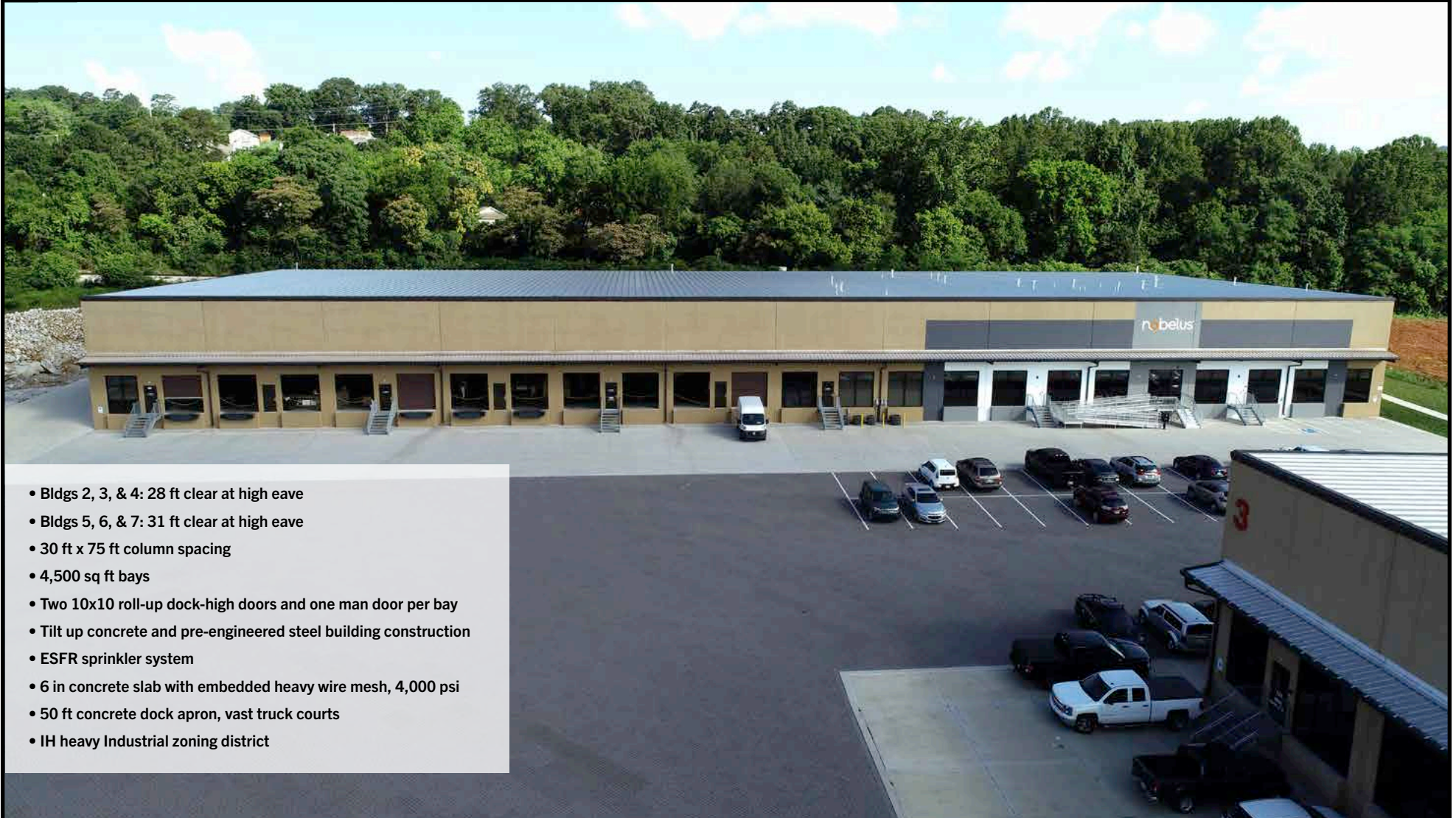


FOR MORE INFORMATION John Osborne josborne@fiserinc.com 865-693-0711 w 865-207-6479 m

Fiser, inc.

fiserinc.com

3CREEK
Warehouse | Distribution

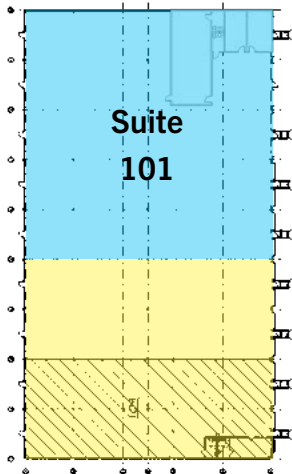
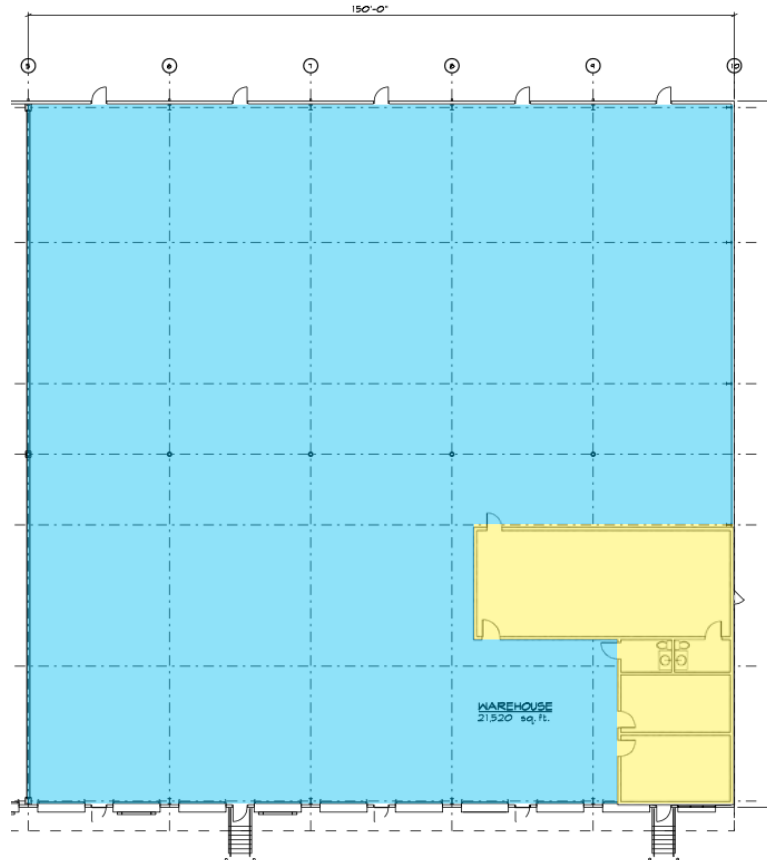


- Bldgs 2, 3, & 4: 28 ft clear at high eave
- Bldgs 5, 6, & 7: 31 ft clear at high eave
- 30 ft x 75 ft column spacing
- 4,500 sq ft bays
- Two 10x10 roll-up dock-high doors and one man door per bay
- Tilt up concrete and pre-engineered steel building construction
- ESFR sprinkler system
- 6 in concrete slab with embedded heavy wire mesh, 4,000 psi
- 50 ft concrete dock apron, vast truck courts
- IH heavy Industrial zoning district

FOR MORE INFORMATION John Osborne josborne@fiserinc.com 865-693-0711 w 865-207-6479 m



Building 2
Suite 101
22,500 SF



Buildout approx.
1,390 SF

