

TO LET - INDUSTRIAL

5 & 6 ARKWRIGHT WAY

NORTH NEWMOOR INDUSTRIAL ESTATE, IRVINE, KA11 4JU



KEY HIGHLIGHTS

- 12,491 sq ft
- Fully refurbished to a high standard
- Located within the popular North Newmoor Industrial Estate
- Convenient motorway links
- Available for immediate occupation
- 4m eaves
- Benefits from dedicated secure yard

SUMMARY

Available Size	12,491 sq ft
Rent	£50,000 per annum
Rates Payable	£15,678.20 per annum
Rateable Value	£28,300
Service Charge	£4,045 per annum
VAT	Applicable
Legal Fees	Each party to bear their own costs
EPC Rating	Upon enquiry

DESCRIPTION

Fully refurbished end-terraced industrial premises of steel portal frame construction.

Externally benefits from large secure yard with personnel entrance on opposite elevation.

2 x vehicle access doors provided.

Internally provides open-plan warehouse space that is undergoing refurbishment.

4m eaves.

LOCATION

Located within the popular and established North Newmoor Industrial Estate just 1 mile east of Irvine town centre.

Convenient A71 access that connects with the M77 motorway providing access to Glasgow approximately 25 mile north-east.

Neighbouring occupiers include British Wool, PTS, Restructa, XLCC, Amer Sports, Barony International Shipping.

Drive Times;

Glasgow - 40 minutes,

East Kilbride - 35 minutes

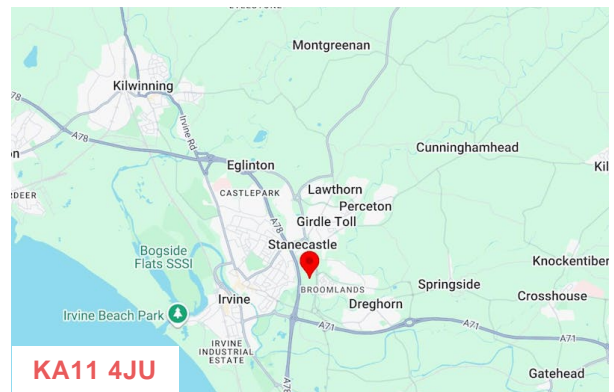
Ayr - 23 minutes

Kilmarnock - 14 minutes

ACCOMMODATION

The accommodation comprises the following areas:

Name	sq ft	sq m	Availability
Unit - 5 & 6	12,491	1,160.45	Available
Total	12,491	1,160.45	



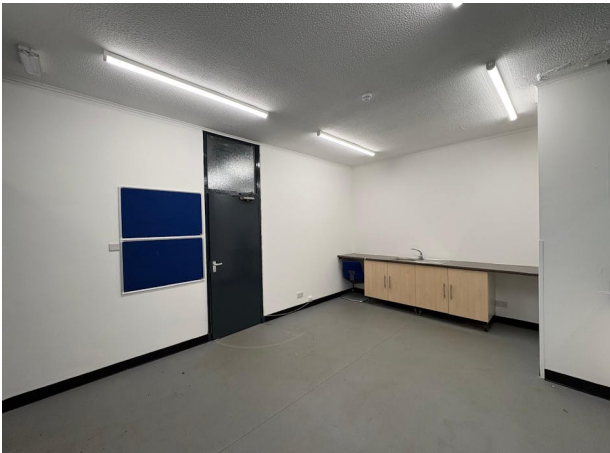
VIEWING & FURTHER INFORMATION

Gregor Brown

0141 212 0059 | 07717447897
gb@gmbrown.co.uk

Kerrie Currie

0141 212 0059 | 07778 431703
kc@gmbrown.co.uk



G·M·BROWN