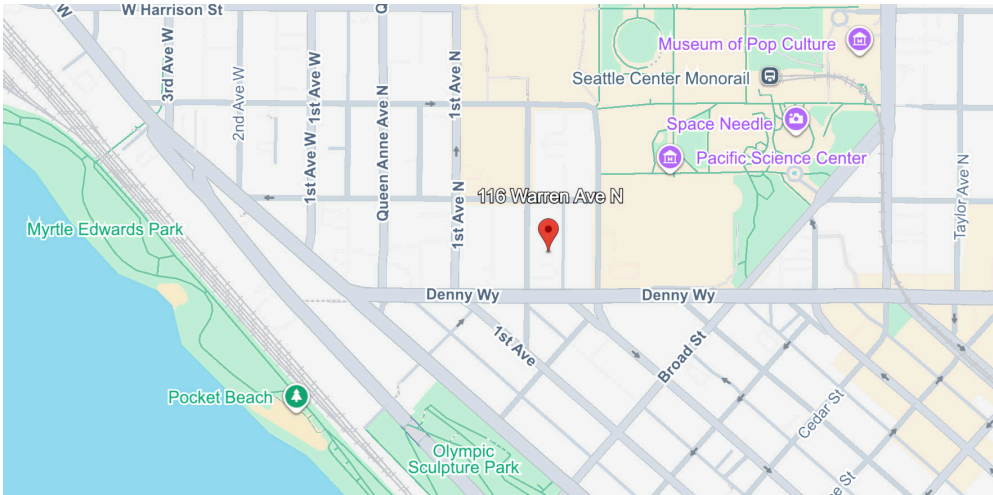


# FOR LEASE

SEATTLE CENTER OFFICE SPACE  
116 WARREN AVE N, SUITE A | SEATTLE | 98109



## PROPERTY FEATURES

- 4,345 SF of office space with multiple private offices, conference space, storage, and full kitchen, and rooftop deck amenity
- Signalized intersections on both adjacent blocks facilitate access to the property from Denny Way without burdening Warren Ave directly.
- Private parking garage with 6 stalls of parking included in rent with private access to the office, with convenient public parking option next door for excess parking needs
- Easy access to over 10 frequent transit lines
- \$25/SF/YR gross



ANDY  
RANDLES

206.405.0090  
andy@ewingandclark.com

CAMERON  
KENT

206.838.7737  
ckent@ewingandclark.com

# INTERIOR SHOTS

116 WARREN AVE N, SUITE A | SEATTLE | 98109



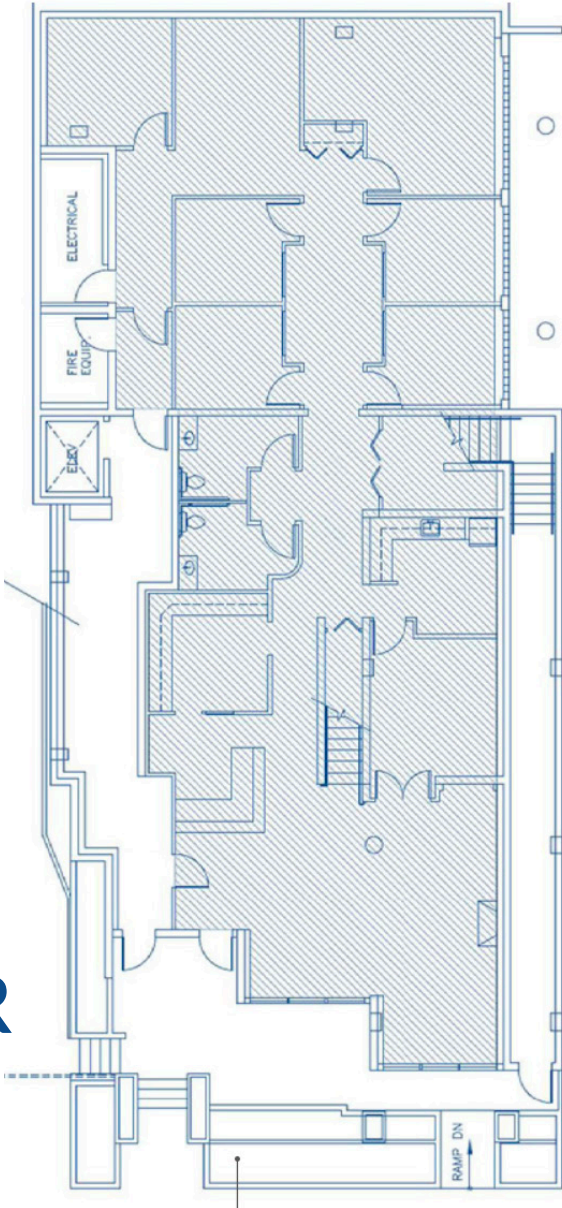
**ANDY  
RANGLES** | 206.405.0090  
andy@ewingandclark.com

**CAMERON  
KENT** | 206.838.7737  
ckent@ewingandclark.com

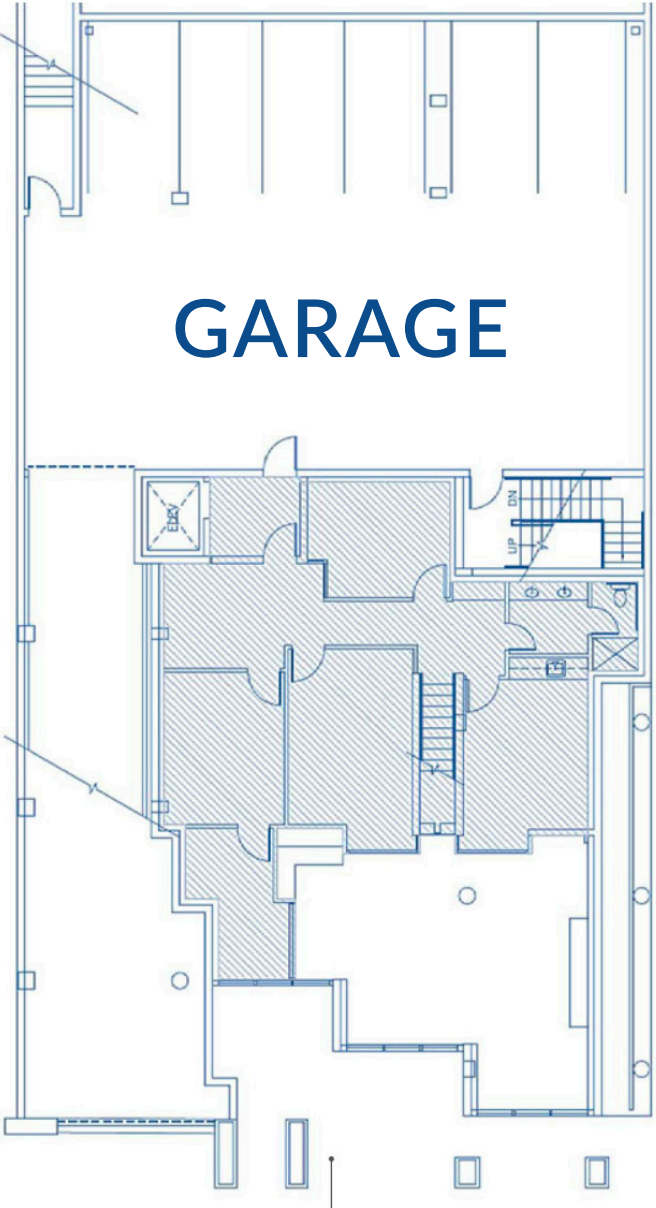
# FLOOR PLAN

116 WARREN AVE N, SUITE A | SEATTLE | 98109

1<sup>st</sup> FLOOR



GARAGE



MEZZANINE

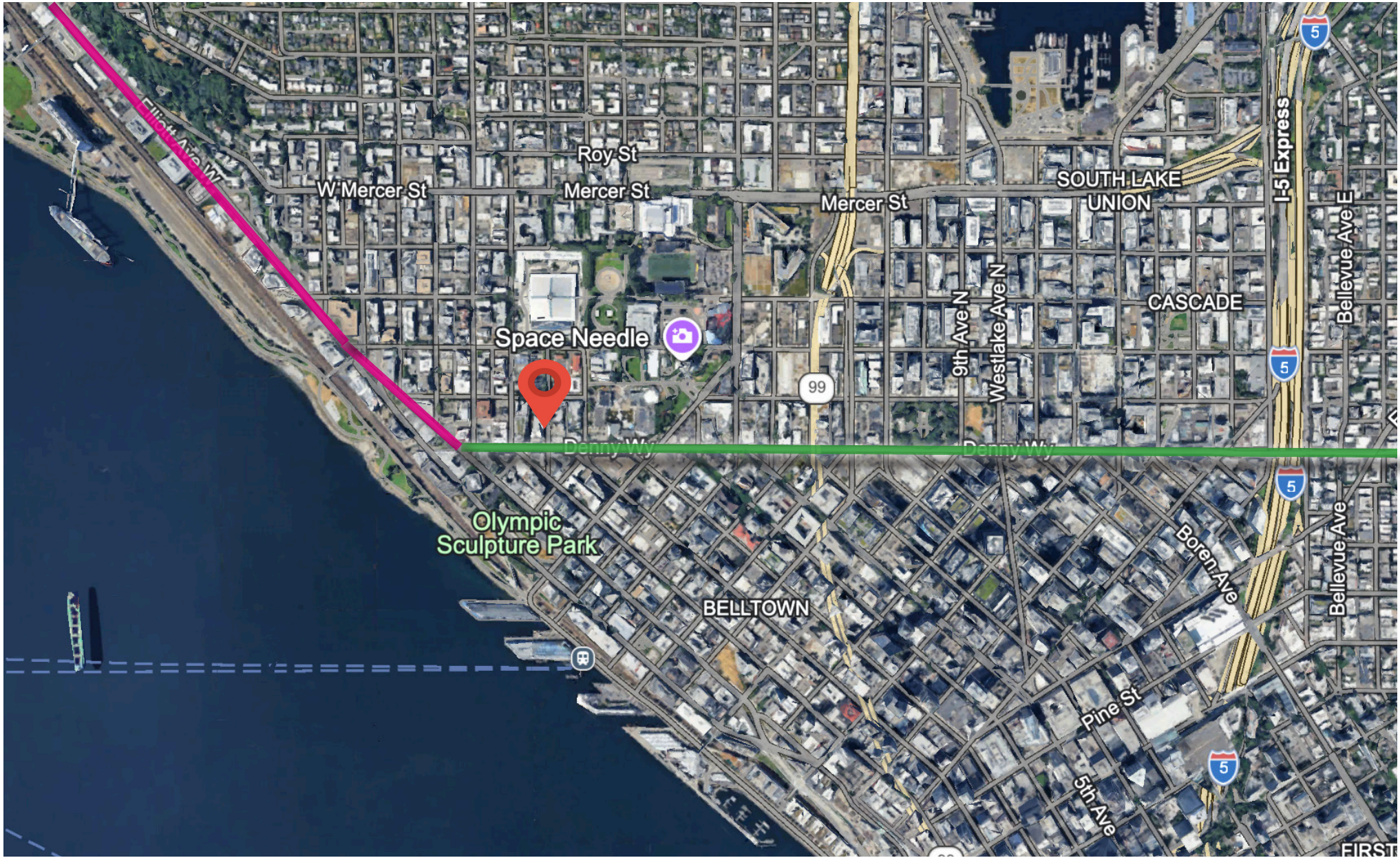


**ANDY RANGLES** | 206.405.0090 | andy@ewingandclark.com

**CAMERON KENT** | 206.838.7737 | ckent@ewingandclark.com

# AERIAL MAP

116 WARREN AVE N, SUITE A | SEATTLE | 98109



**ANDY RANGLES** | 206.405.0090  
andy@ewingandclark.com

**CAMERON KENT** | 206.838.7737  
ckent@ewingandclark.com