



12863 SAN FERNANDO RD, SYLMAR, CA 91342

INDUSTRIAL



FOR SALE

OFFERING MEMORANDUM



● SITE DESCRIPTION

IKON Properties is proud to present 12863 San Fernando Road in Sylmar, a rare freestanding industrial opportunity in one of the San Fernando Valley's most established industrial corridors.

The property consists of $\pm 8,820$ square feet of warehouse space plus an additional $\pm 1,520$ square foot mezzanine, providing flexibility for office build-out, storage, or expanded operational use. Situated on a 17,031 square foot corner parcel, the site features a secured, gated concrete yard suitable for loading, parking, and outdoor storage. With LACM zoning, two ground-level roll-up doors, two dock-high loading docks, and convenient access to major freeway arteries, this offering presents a compelling opportunity for both owner-users and investors seeking long-term value in a supply-constrained industrial market.

*All information is deemed reliable but not guaranteed, should be independently verified, and is not legal, financial, or investment advice.

PROPERTY TYPE
Industrial

BUILDING
8,820 SF

LOT
17,031 SF

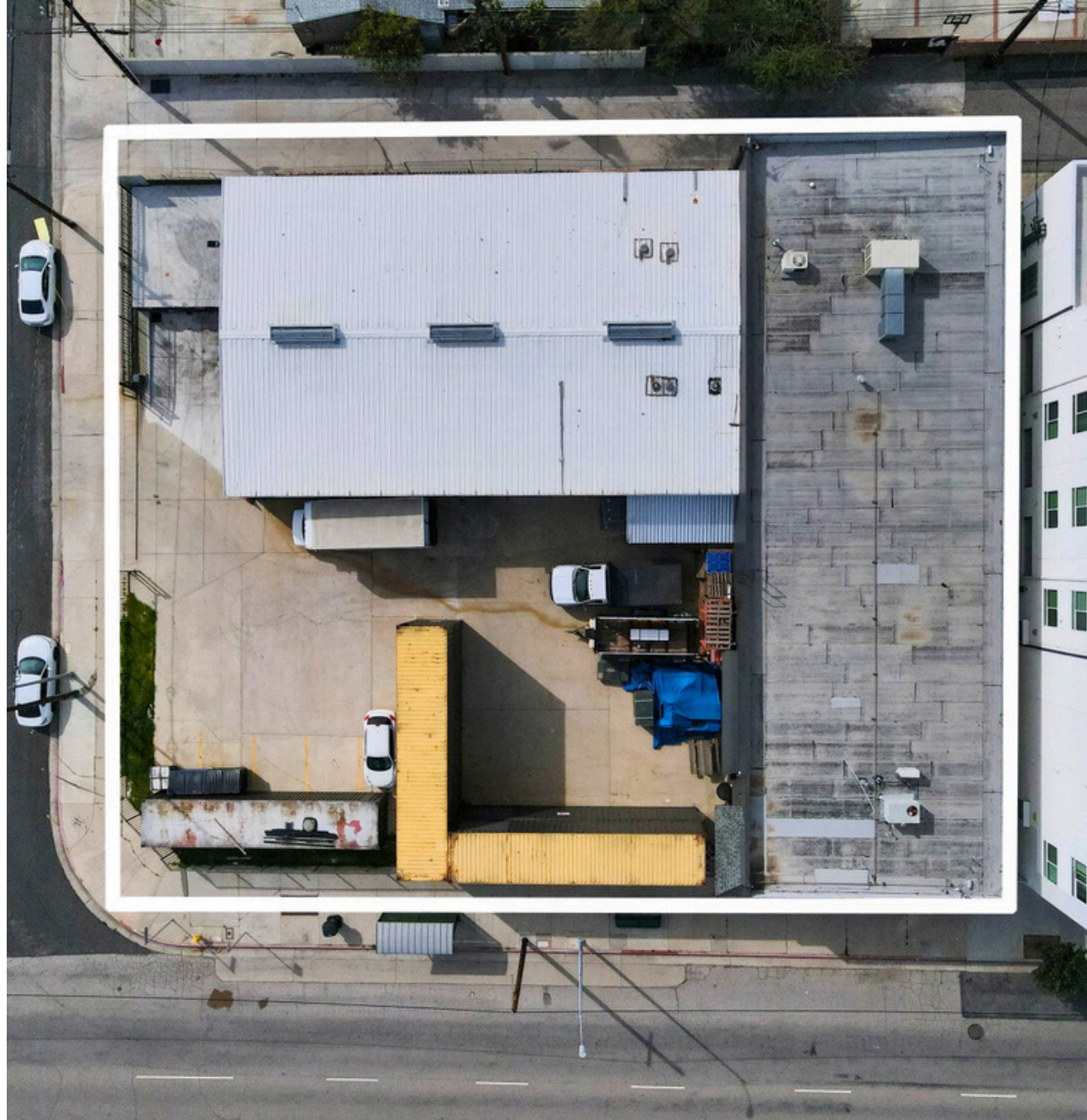
YEAR BUILT
1981

ZONING
LACM



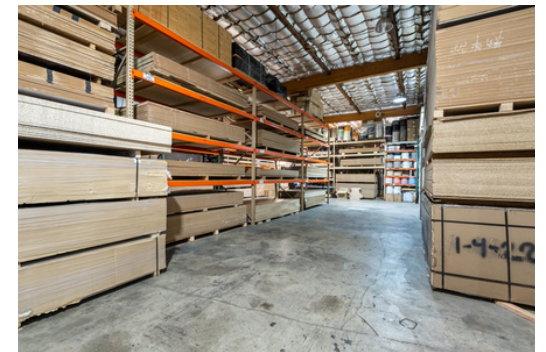
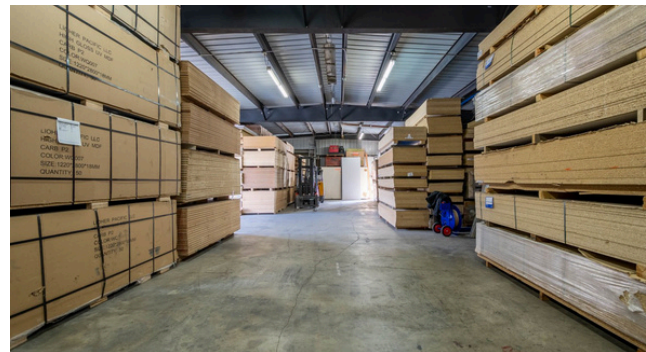
PROPERTY HIGHLIGHTS

- 8,820 SF industrial building + 1,520 SF mezzanine.
- Corner lot with gated, concrete-paved yard.
- LACM zoning - Ideal for manufacturing, distribution, contractor, or warehouse use.
- Clear-Span Warehouse with High Ceilings, Two Ground Level Roll-Up Doors & Two Loading Docks
- Prime access to the 5, 210, 118, and 405 Freeways.
- Located within a designated Opportunity Zone.

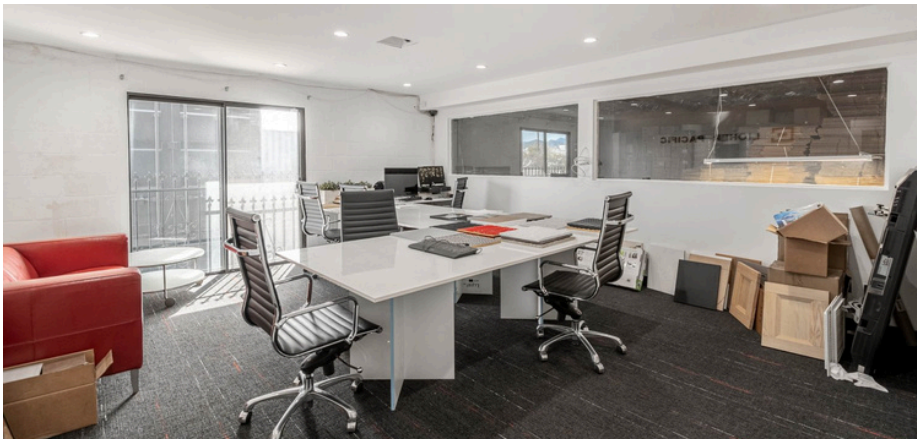


*All information is deemed reliable but not guaranteed, should be independently verified, and is not legal, financial, or investment advice.

PROPERTY PHOTOS



PROPERTY PHOTOS



RETAIL MAP



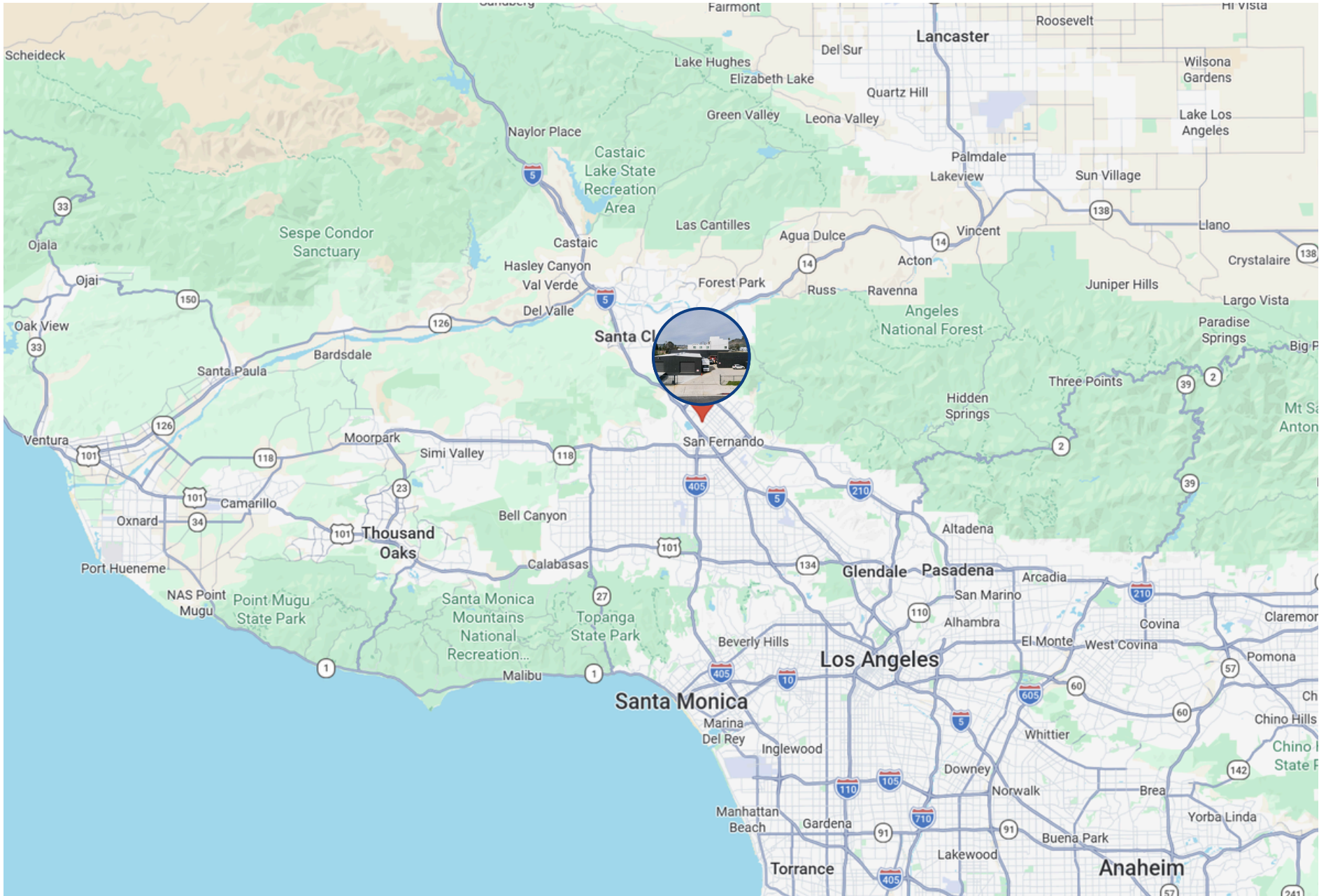
AERIAL MAP

LOCATED ON SAN FERNANDO ROAD IN SYLMAR, THIS PROPERTY SITS WITHIN A WELL-ESTABLISHED INDUSTRIAL AND COMMERCIAL CORRIDOR SURROUNDED BY WAREHOUSE, MANUFACTURING, AUTOMOTIVE, AND SERVICE USES. THE SITE OFFERS STRONG REGIONAL CONNECTIVITY WITH NEARBY ACCESS TO INTERSTATE 5, INTERSTATE 210, AND STATE ROUTE 118, PROVIDING EFFICIENT TRAVEL THROUGHOUT THE SAN FERNANDO VALLEY AND GREATER LOS ANGELES AREA. THE LOCATION BENEFITS FROM DIRECT FRONTAGE ON A MAJOR ARTERIAL AND PROXIMITY TO SURROUNDING BUSINESS AND COMMUNITY AMENITIES.

12863 SAN FERNANDO RD

San Fernando Rd

LOCATION MAP





Category	1 Mile	3 Mile	5 Mile
2024 Total Population	19,504	140,271	343,333
2029 Population	18,688	135,086	330,542
Pop Growth 2024-2029	-4.18%	-3.70%	-3.73%
Average Age	37.10	38.70	38.70
2024 Total Households	4,810	37,656	93,601
HH Growth 2024-2029	-4.45%	-3.94%	-3.93%
Median Household Income	\$79,736	\$85,719	\$82,316
Avg Household Size	3.80	3.50	3.50
2024 Avg HH Vehicles	2	2	2
Median Home Value	\$664,409	\$685,795	\$693,643
Median Year Built	1967	1965	1966



The information contained in the following listing is proprietary and strictly confidential. It is intended to be reviewed only by the party receiving it from IKON Properties and it should not be made available to any other person or entity without the written consent of IKON Properties. By taking possession of and reviewing the information contained herein the recipient agrees to hold and treat all such information in the strictest confidence. The recipient further agrees that the recipient will not photocopy or duplicate any part of the email content. If you have no interest in the subject property, please promptly delete this email. This email has been prepared to provide summary, unverified financial and physical information to prospective purchasers, and to establish only a preliminary level of interest in the subject property. The information contained herein is not a substitute for a thorough due diligence investigation. IKON Properties has not made any investigation, and makes no warranty or representation with respect to the income or expenses for the subject property, the future projected financial performance of the property, the size and square footage of the property and improvements, the presence or absence of contaminating substances, PCBs or asbestos, the compliance with local, state and federal regulations, the physical condition of the improvements thereon, or financial condition or business prospects of any tenant, or any tenant's plans or intentions to continue its occupancy of the subject property. The information contained in this offering memorandum has been obtained from sources we believe are reliable; however, IKON Properties has not verified, and will not verify, any of the information contained herein, nor has IKON Properties conducted any investigation regarding these matters and makes no warranty or representation whatsoever regarding the accuracy or completeness of the information provided. All potential buyers must take appropriate measures to verify all of the information set forth herein. Prospective buyers shall be responsible for their costs and expenses of investigating the subject property.





BLAS FERNANDEZ
DIRECTOR, COMMERCIAL INVESTMENTS

818.319.9191
blas@ikonpropertiesla.com
ikonpropertiesla.com
LIC NO. 02012036



JAMES VANIAN
INVESTMENT ASSOCIATE

818.262.6065
james@ikonpropertiesla.com
ikonpropertiesla.com
LIC NO. 02085069