

FOR LEASE

THE PECK BUILDING | OFFICE SPACE

701 NORTH 36TH STREET | SEATTLE, 98103



LOCATION	SIZE RSF	RENT mo/yr	COMMENT- All suites have operable windows, 11' exposed wood beam ceilings and territorial views Access to rooftop patio.
Suite 330	2342 sf	\$6,247 / \$32	3 privates, 1 large office or conference area, reception area, full kitchen
Suite 440	805 sf	\$2146 / \$32	Reception area, 4 offices, sink area. Available November.
Loft B Penthouse LEASED	1150 sf	\$3066 / \$32 +gas/electric	Full kitchen and bath. Separate electric + gas meters. Water/sewer/garbage included.

PROPERTY FEATURES

- High visibility location in the heart of the vibrant and desirable Fremont neighborhood
- Contemporary design office building with high ceilings and abundant light throughout with views
- Close to Burke Gilman Trail with bike storage and shower facility
- Air conditioned, ADA compliant, elevator serviced and secured parking garage
- Access to roof top deck available.



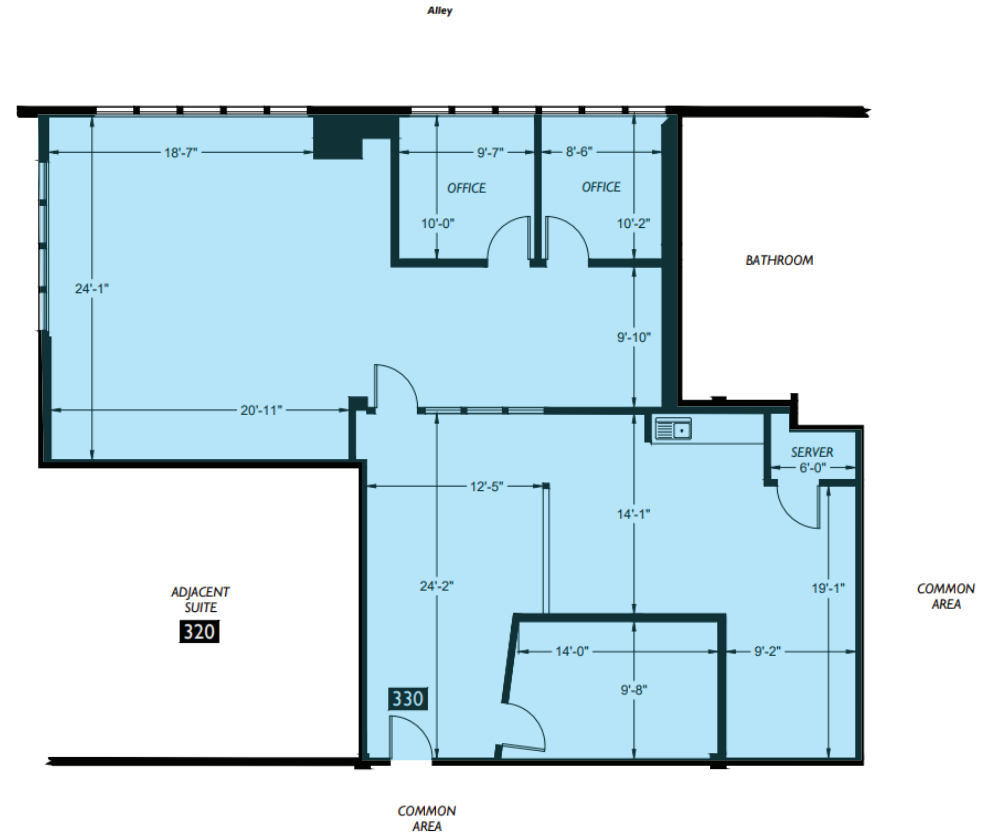
**ROGER
LORENZE**

206.406.1547
rlorenze@ewingandclark.com

**BOB
MEYER**

206.399.2596
meyer@ewingandclark.com

SUITE 330



MAP

