



For Sublease

The Exchange 475 Howe Street

Vancouver, BC

Mark Chambers*

Executive Vice President

+1 604 998 6005

mark.chambers@jll.com

*Personal Real Estate Corporation

Paris Lavan

Vice President

+1 604 998 6028

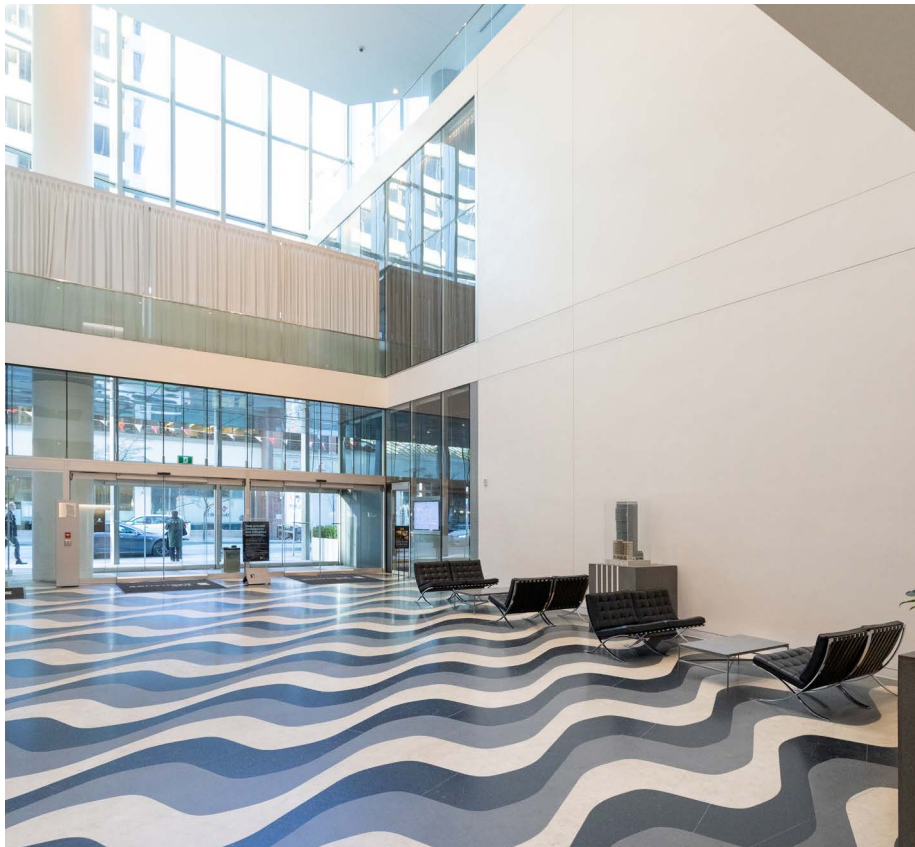
paris.lavan@jll.com



THE BUILDING

The Exchange is distinctly located in the heart of downtown Vancouver's financial district at the corner of Howe and West Pender Streets

- AAA Office Space
- Financial Centre
- 31 storeys, 372,000 square feet
- LEED Platinum heritage restoration
- Designed by Harry Gugger Studio with Iredale Group Architecture



100
Rider's Paradise



80
Very Bikeable



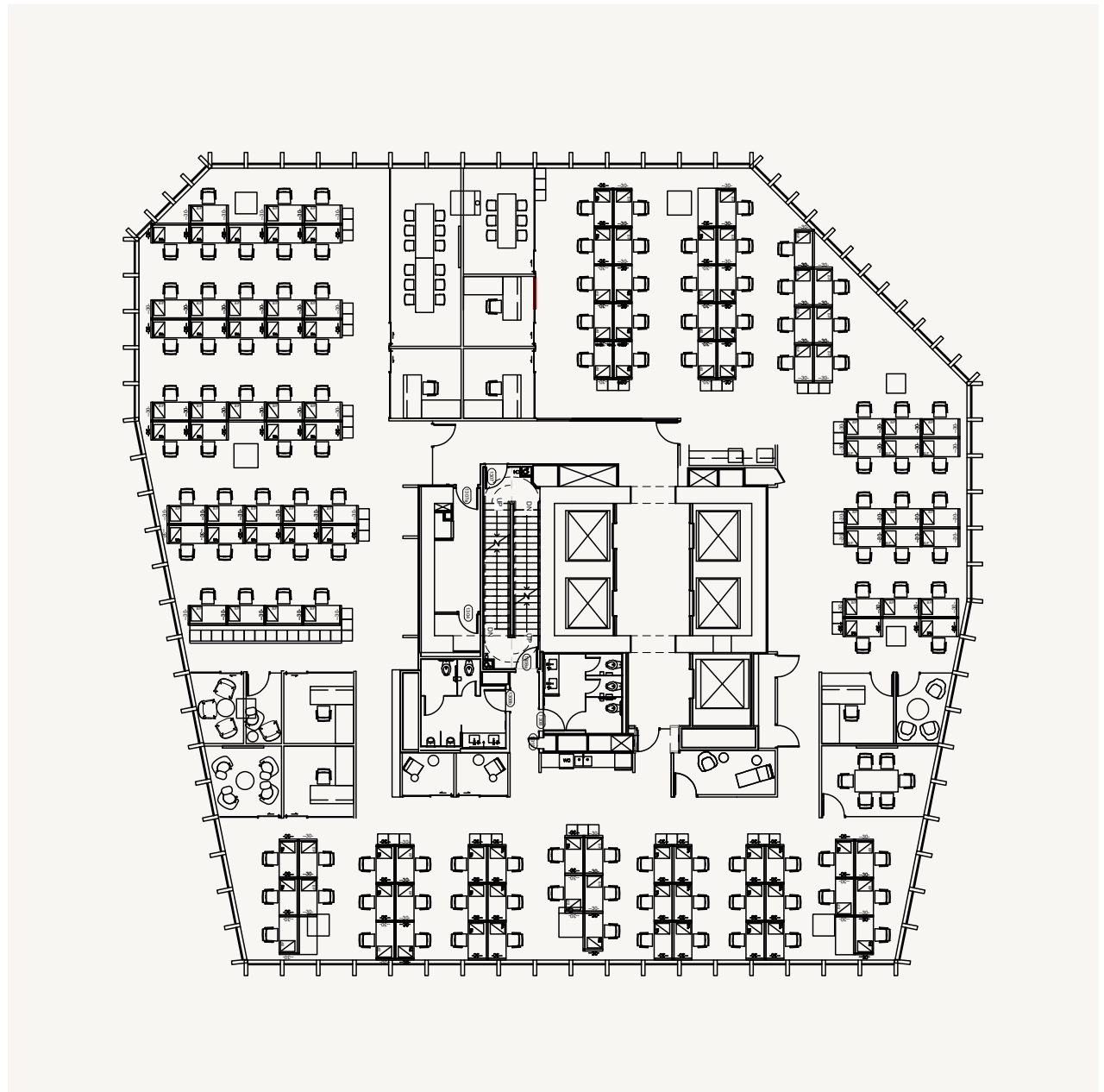
93
Walker's Paradise

For Sublease

13th Floor

SALIENT DETAILS

SQUARE FOOTAGE	11,383 sf
AVAILABILITY	Immediately
SUBLEASE EXPIRY	May 30, 2028
BASIC RENT	Contact listing agents
ADDITIONAL RENT (2023)	\$20.21 psf/pa (estimate)





For Sublease

475 Howe Street

Mark Chambers*
Executive Vice President
+1 604 998 6005
mark.chambers@jll.com

Paris Lavan
Vice President
+1 604 998 6028
paris.lavan@jll.com

**Jones Lang LaSalle Real Estate
Services Inc.**
510 West Georgia Street
Suite 2150
Vancouver, BC V6B 0M3

jll.ca

