

EZ STORAGE RETAIL CENTER



MID-AMERICA®
Real Estate-Michigan, Inc.

30215 Southfield Road / Southfield, MI

FOR LEASE



AVAILABLE
1,800 SF

RETAIL OPPORTUNITY

EZ STORAGE RETAIL CENTER



Address

30215 Southfield Road
Southfield, MI 48076

Availability

1,800 SF

Features

New development with strong visibility from Southfield Road. Join Beaute Anthologie and EZ Storage, which bring consistent foot traffic to the center. An 1,800 SF inline space is available for lease. Located along the prominent Southfield corridor, the space is surrounded by major national retailers such as Target, Home Depot, Burlington, Starbucks, and more.

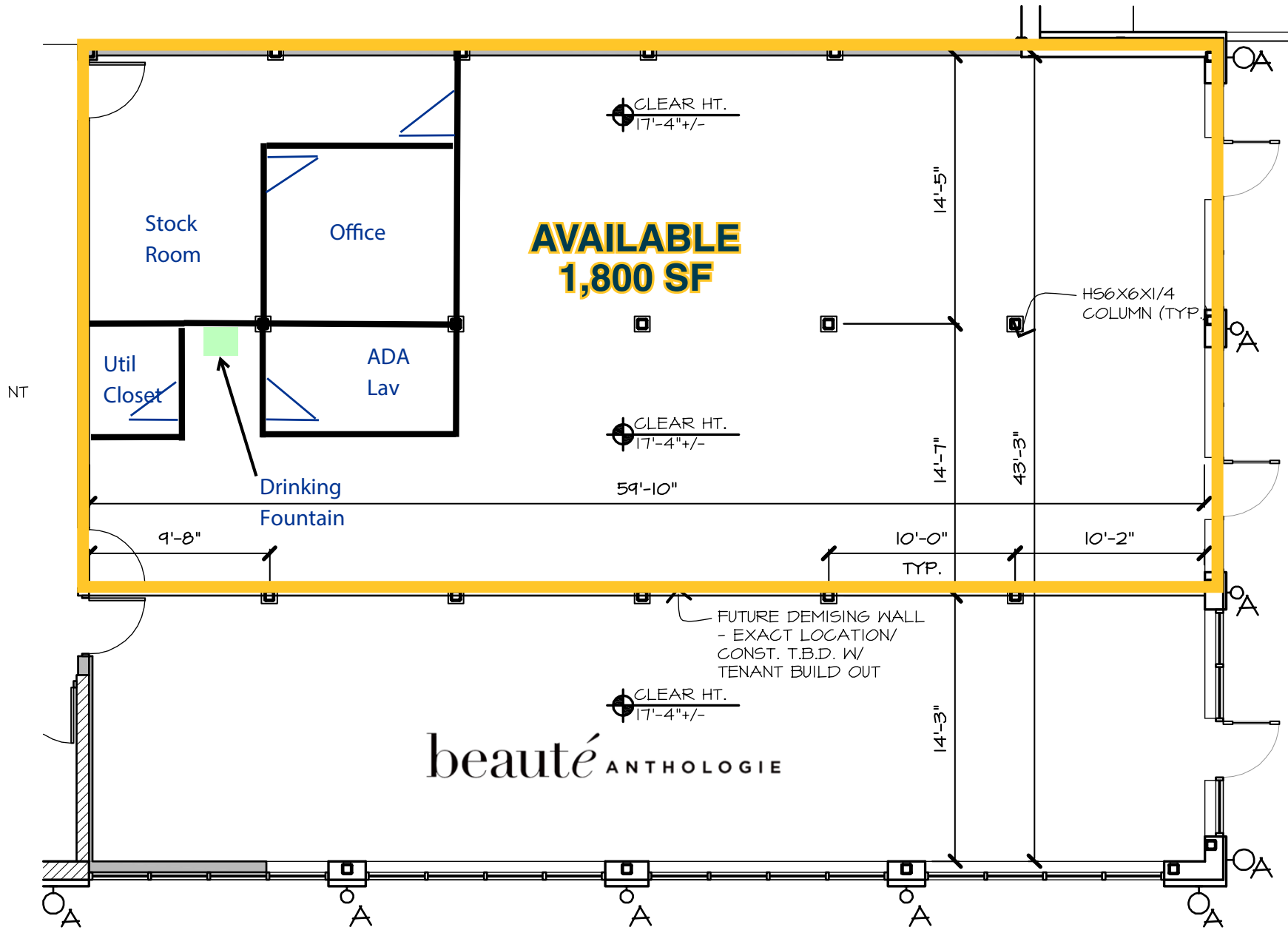
Area Tenants



Demographics (2025)

	1 MILE	3 MILES	5 MILES
POPULATION	12,118	104,909	261,823
HOUSEHOLDS	5,223	46,972	119,934
AVG HOUSEHOLD INCOME	\$125,918	\$146,517	\$136,103
DAYTIME POPULATION	12,490	134,661	325,939

EZ STORAGE RETAIL CENTER



EZ STORAGE RETAIL CENTER



EZ STORAGE RETAIL CENTER



**Anthony
Mekani**

Mid-America Real Estate -
Michigan, Inc.

T: 248.855.6800

EBirnholtz@MidAmericaGrp.com

**Jake
Lievois**

Mid-America Real Estate -
Michigan, Inc.

T: 248.855.6800

JLievois@MidAmericaGrp.com



38500 Woodward Ave, Suite 100
Bloomfield Hills, Michigan 48304
248.855.6800

MidAmericaGrp.com

CONTACT