

AI-generated rendering is a conceptual image intended for illustrative purposes only. Final design and specifications may vary.



446-448 Main Street, East Orange, NJ 07018

FOR MORE INFORMATION, PLEASE CONTACT EXCLUSIVE BROKER:

Ming Simon

C: 646.331.5620

D: 862.233.9136

Ming@ZoltekCRE.com

ZOLTEK
COMMERCIAL REAL ESTATE SERVICES

AVAILABLE

FOR LEASE

- Street Retail Spaces Available for Lease: 1,187 SF & 1,139 SF
- Units can be Combined
- Located at Signalized Intersection
- High Commuter Traffic Exposure
- 44' Frontage on Main Street (MLK Blvd)
- Traffic Count Main Street: 18,705 VPD
- Zoning Commercial (ACD) Central Arts and Cultural District: Click [Here For More Information](#)
- Neighboring National Tenants: Domino's, Wendy's, Playa Bowls, 7-ELEVEN, Walgreen's, ShopRite, Rite-Aid, Family Dollar, Citizens Bank, PNC Bank, Advanced Auto Parts, and Many More...

FOR MORE INFORMATION, PLEASE CONTACT EXCLUSIVE BROKER:

Ming Simon

C: 646.331.5620

D: 862.233.9136

Ming@ZoltekCRE.com

ZOLTEK

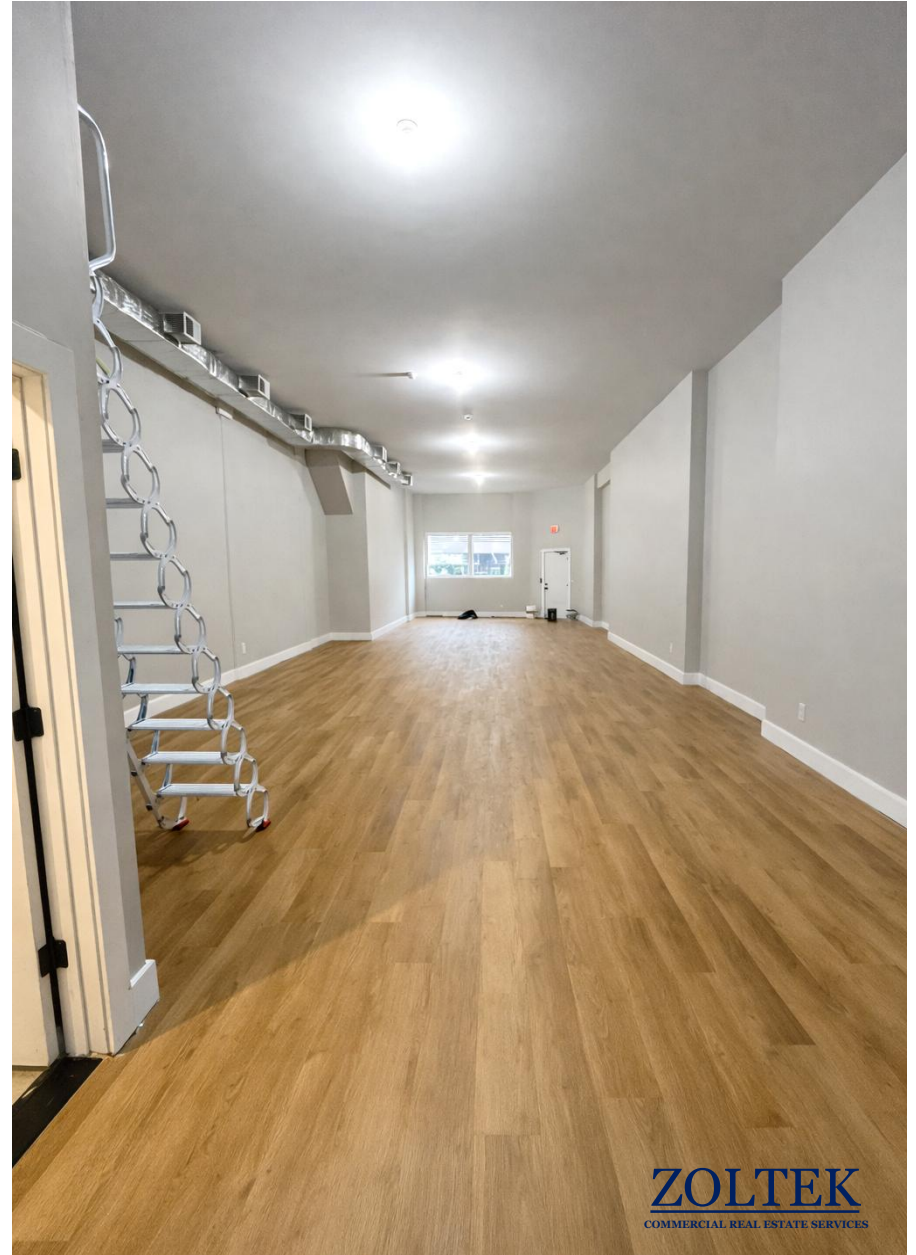
COMMERCIAL REAL ESTATE SERVICES

ZOLTEK COMMERCIAL REAL ESTATE SERVICES- Licensed Real Estate Broker - 15 Furler Street, Totowa, NJ 07512 * T: 973.798.6130

WWW.ZOLTEKCRE.COM ALTHOUGH ALL THE INFORMATION REGARDING PROPERTY FOR SALE, RENTAL OR FINANCING IS FROM SOURCES DEEMED RELIABLE SUCH INFORMATION HAS NOT BEEN VERIFIED, AND NO EXPRESS REPRESENTATION IS MADE NOR IS ANY TO BE IMPLIED AS TO THE ACCURACY THEREOF, AND IT IS SUBMITTED SUBJECT TO ERRORS, OMISSIONS, CHANGE OF PRICE, RENTAL OR OTHER CONDITIONS, PRIOR SALE, LEASE OR FINANCING, OR WITHDRAWAL WITHOUT NOTICE

1,187 SF – RETAIL SPACE A

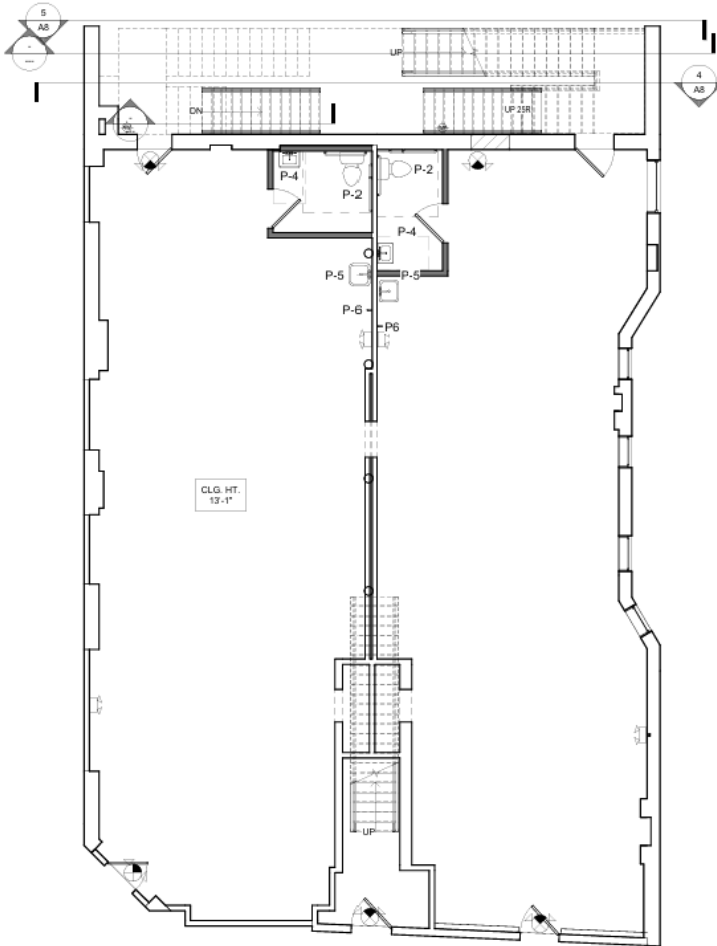
448 Main St. East Orange, NJ



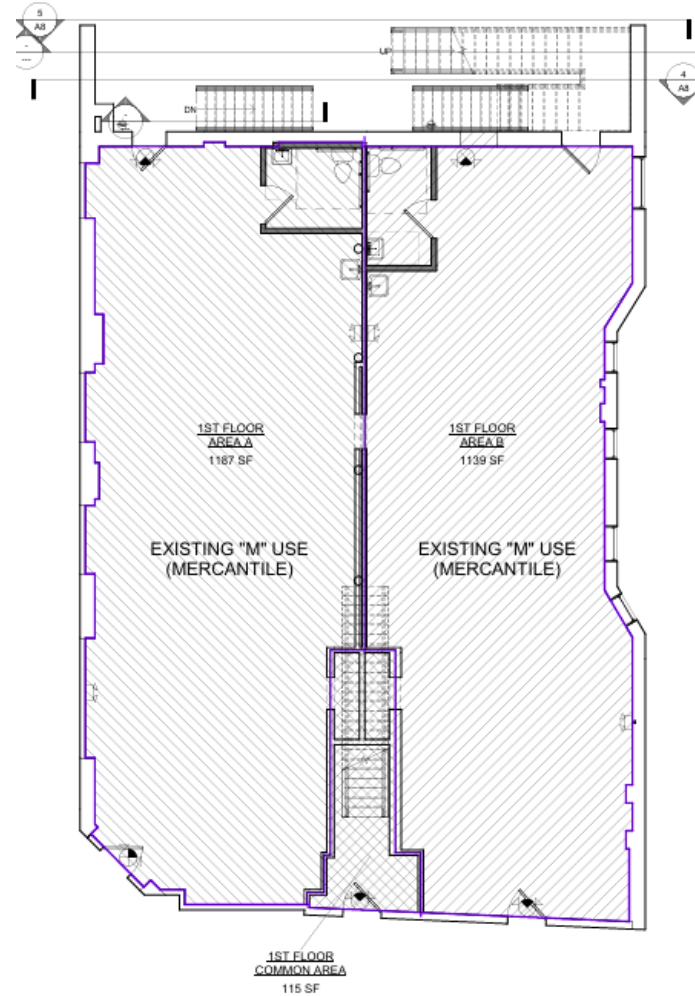
1,139 SF – RETAIL SPACE B

446 Main St. East Orange, NJ





2 1ST FLOOR PLUMBING PLAN
3/16" = 1'-0"



1 1ST FLOOR OCCUPANCY
3/16" = 1'-0"

8	12292 LAYOUT
2	REVISIONS

GUT & VANN
REGISTERED PROFESSIONAL ENGINEER
 177 AVENUE OF THE STATES
 SUITE 300
 LAWRENCE, NJ 08804
 732-981-0171 | info@gutvann.com

DESIGNER & SEAL

 NAFTOLI GUT, R.A.
N.J. LICENSE # 2100117300
 NO LICENSE # PROVIDED

DATE PLOTTED

PROJECT
 INTERIOR ALTERATIONS TO
 EXISTING 3-STY RESIDENCE
448 MAIN ST LLC
448 MAIN STREET
 EAST ORANGE, NJ 07018
 BLOCK: 370 LOT:1

ISSUES
 PLUMBING PLANS

DATE 8/11/2021
 SCALE As indicated
 JOB NUMBER 21-185
 DRAWN RBD CHECKED NG

P1

SITE PLAN

Glenwood Apartments

Edward T. Bowser Elementary School

East Orange Community Charter

Com-Tec Institute

PARK AVE

JAMAICERY

Washington Towers

Prospect Ave Apartments

Fountain of the Living Word Church

15 Summit Street Apartments



112 Lincoln Place Apartments



MGM Medical Center



East Orange Police

Holy Spirit & Roaman Catholic Church

Cicely L. Tyson Community Arts Elementary School



MAIN ST. TRAFFIC COUNT: 18,705 VPD

SITE

Hue Soul Apartments



East Orange Public Library

Tyson Elementary School



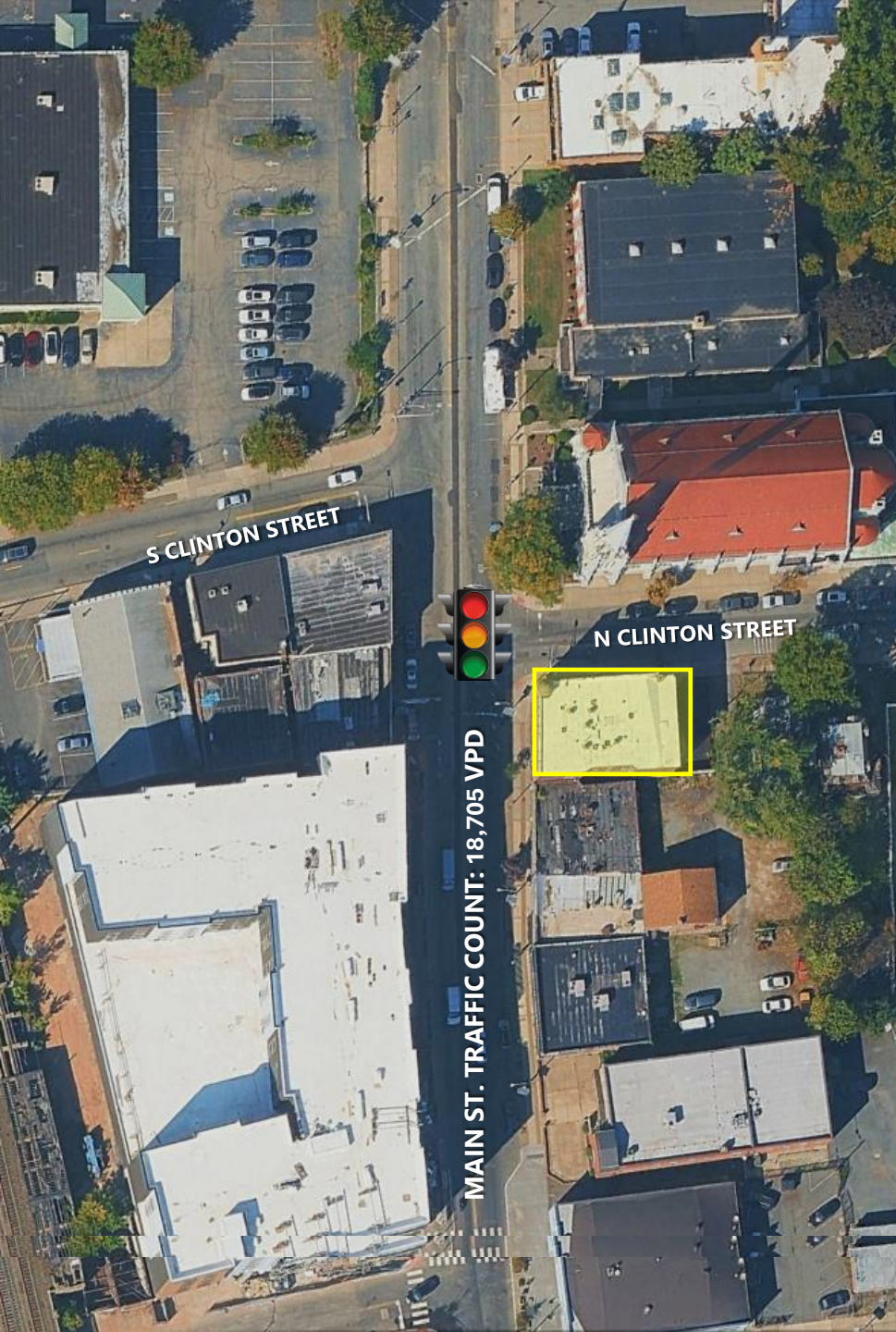
Grace Apostolic Church

ZOLTEK

COMMERCIAL REAL ESTATE SERVICES INC.

East Orange Municipal Court





DEMOGRAPHICS	<i>1 Mile</i>	<i>3 Miles</i>	<i>5 Miles</i>
Population	66,099	434,116	835,792
Daytime Population	17,462	145,871	301,160
Households	26,731	160,464	308,715
Median Age	37.9	37	38.2
Average HH Income	\$77,146	\$89,345	\$105,805

FOR MORE INFORMATION, PLEASE CONTACT EXCLUSIVE BROKER:

Ming Simon

C: 646.331.5620

D: 862.233.9136

Ming@ZoltekCRE.com

ZOLTEK

COMMERCIAL REAL ESTATE SERVICES