

Appleton Paper Mill and Paper Conversion Facility

20.5 Acres Available

11 Parcel Portfolio
Appleton, WI 54911

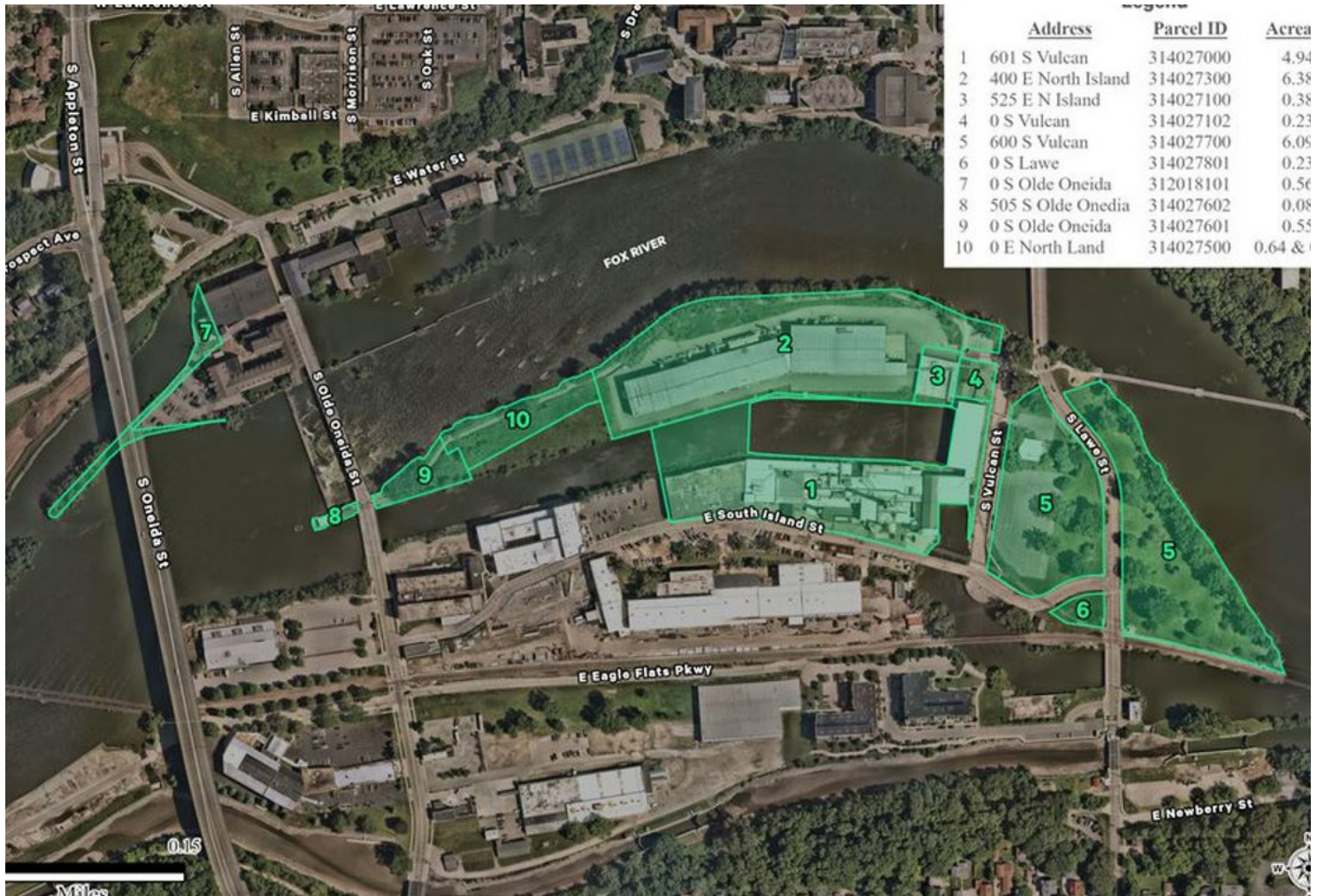


Contact Us

**SANDY
BARIN**

+1952 924 4816

sandy.barin@cbre.com



Overview

11 Parcels available.

Land

+ 20.5 Acres

Year Built

+ 1895 & 2016

Available SF

+ 34,700 SF Mill Facility (built in 1896 with recent upgrades)

+ 85,000 SF Saturator Facility built in 2016)

Zoning

+ General Industrial District

Power

+ 4 Megawatts

Additional Features

+ All equipment in place and operational

+ 6 turbine generators via owned dam on the Fox River

Along Fox River





11 Parcel Portfolio



Contact Us

**SANDY
BARIN**

+1952 924 4816

sandy.barin@cbre.com