

FOR LEASE

QUAD 205 BUSINESS PARK

10906-11012 NE 39th Street & 4018 NE 112th Avenue Vancouver, WA 98682



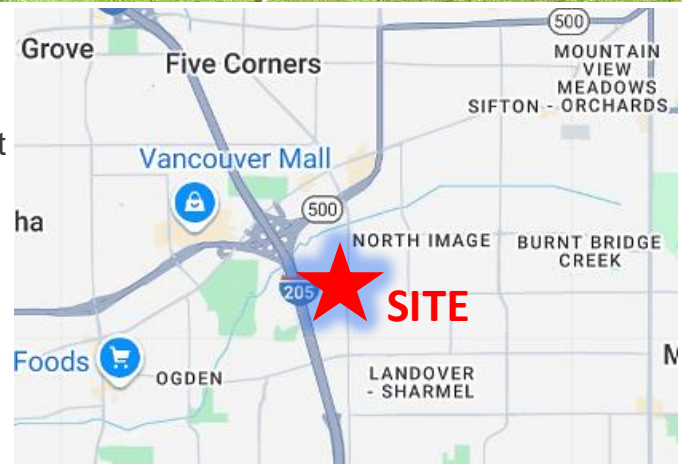
900 Washington St, Suite 850, Vancouver, WA
360.597.0574 | www.fg-cre.com



PROPERTY HIGHLIGHTS

Quad 205 Business Park is conveniently located just east of I-205 near SR 500 and ten minutes to Portland International Airport. The 112th Avenue corridor is the most sought-after industrial park location in Clark County.

Availability: See Reverse Side



FOR MORE INFORMATION:

Garret Harper, CCIM, SIOR
360.597.0572 | gharper@fg-cre.com

FOR LEASE

QUAD 205 BUSINESS PARK

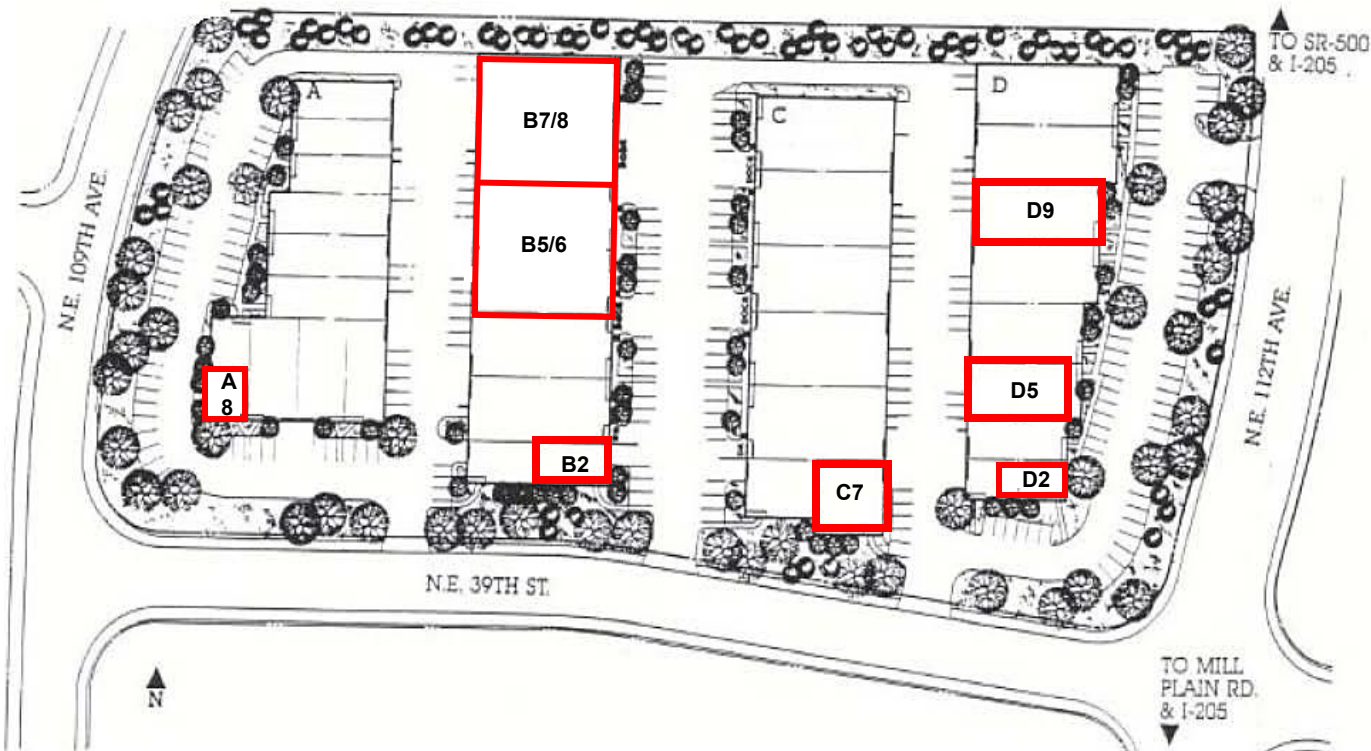
10906-11012 NE 39th Street & 4018 NE 112th Avenue Vancouver, WA 98682



900 Washington St, Suite 850, Vancouver, WA
360.597.0574 | www.fg-cre.com.

Availabilities

Suite	Shell SF	Office SF	Loading	CLR Height	Base Rent/Mo	NNN Rent/Mo	Total Rent/Mo
A8	1,050	400	N/A	14'	\$1,335	\$365	\$1,700
B2	1,575	575	Grade	17'	\$2,000	\$545	\$2,545
B5/6	9,100	1,400	Dock & Grade	17'	\$9,275	\$3,140	\$12,415
B7/8	9,100	1,171	Dock & Grade	17'	\$9,025	\$3,140	\$12,165
C7	3,112	2,168	Grade	14'	\$5,030	\$1,075	\$6,105
D2	1,036	680	Grade	14'	\$1,625	\$360	\$1,985
D5	2,380	648	Grade	14'	\$2,735	\$820	\$3,555
D9	3,150	1,000	Grade	14'	\$3,775	\$1,090	\$4,865



This statement with the information it contains is given with the understanding that all the negotiations relating to the purchase, rental or leasing of the property described above shall be conducted through this office. The above information, while not guaranteed, has been secured from sources we believe to be reliable.