

3201

S 323RD ST

3201 S 323RD ST, FEDERAL WAY, WA 98001

Davita

SUBLEASE
26,307 TO 108,946 SF

NEWMARK

LEVI BUNDRANT
ASSOCIATE
425.409.7405
LEVI.BUNDRANT@NMRK.COM

ED MAO
ASSOCIATE
310.694.7191
EDWARD.MAO@NMRK.COM

BUILDING HIGHLIGHTS

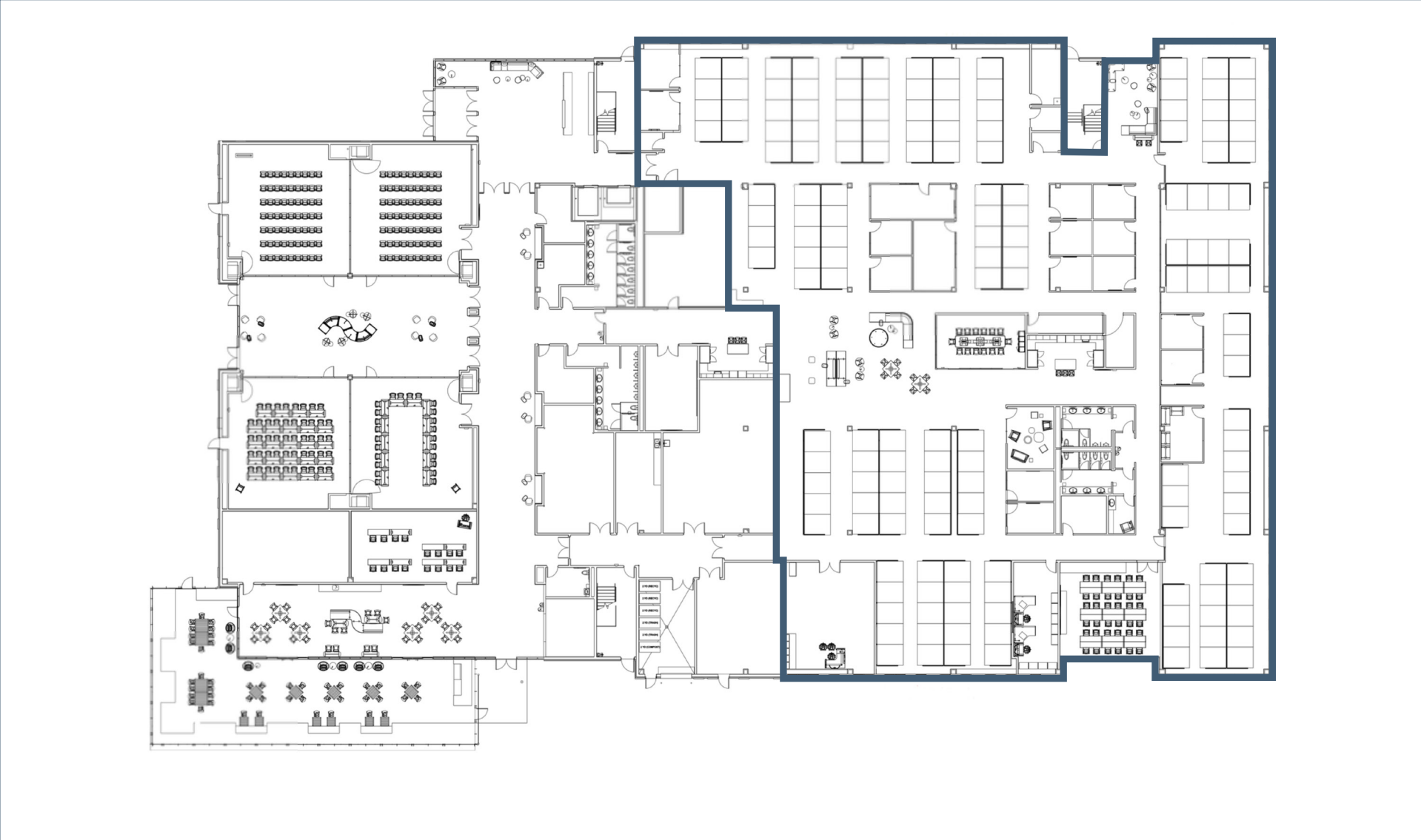
- Sublease
- 26,307 to 108,946 SF Available
- Lease expiration: 5/31/2042
- Long term sublease available at below market rates.
- Class A+ Federal Way Building, with outstanding access.
- Conference and all hands center on site.

VIRTUAL TOUR



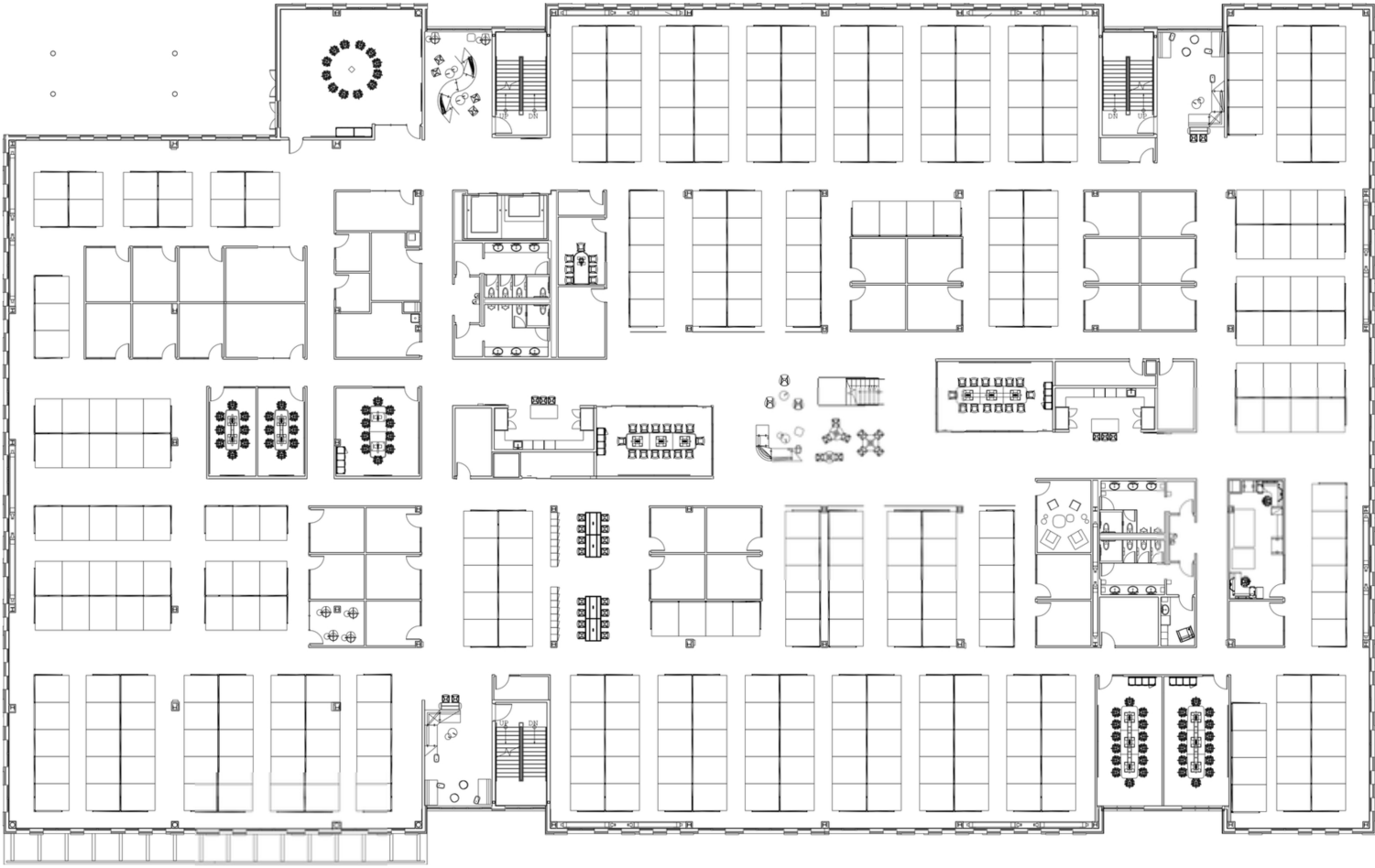
FIRST FLOOR | 26,307 SF

- Can combine with second floor for 79,907 SF total



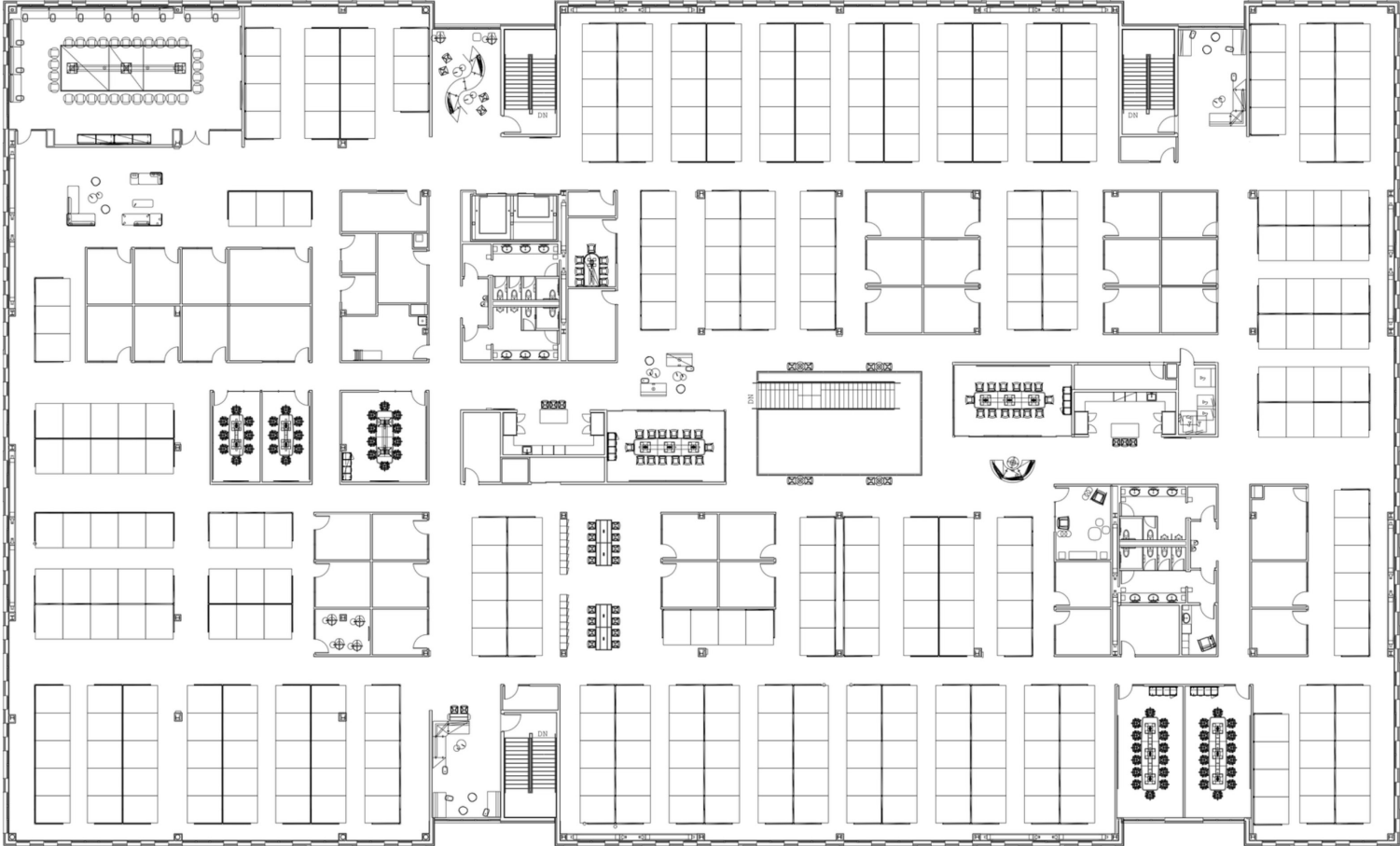
SECOND FLOOR | 53,600 SF

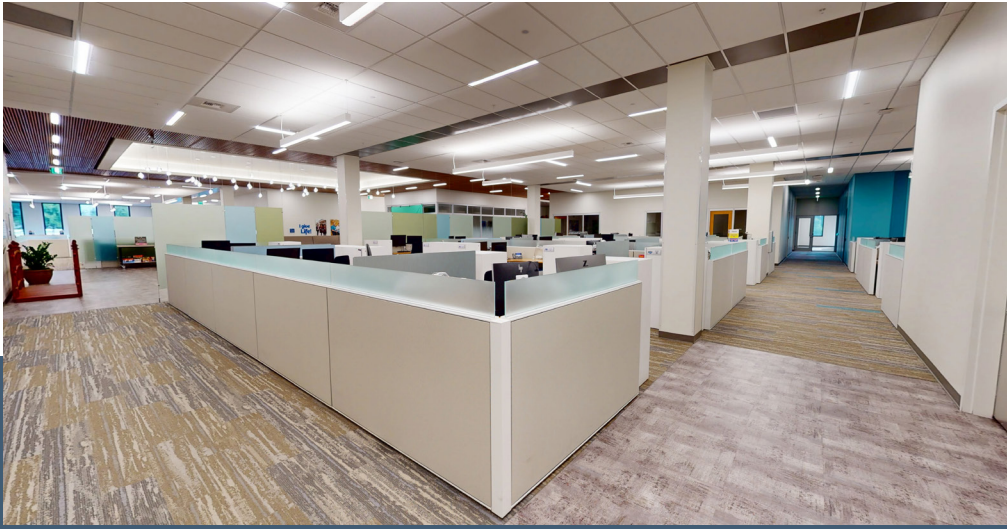
- Can combine with first floor for 79,907 SF total
- OR
- Can combine with third floor for 108,948 SF total



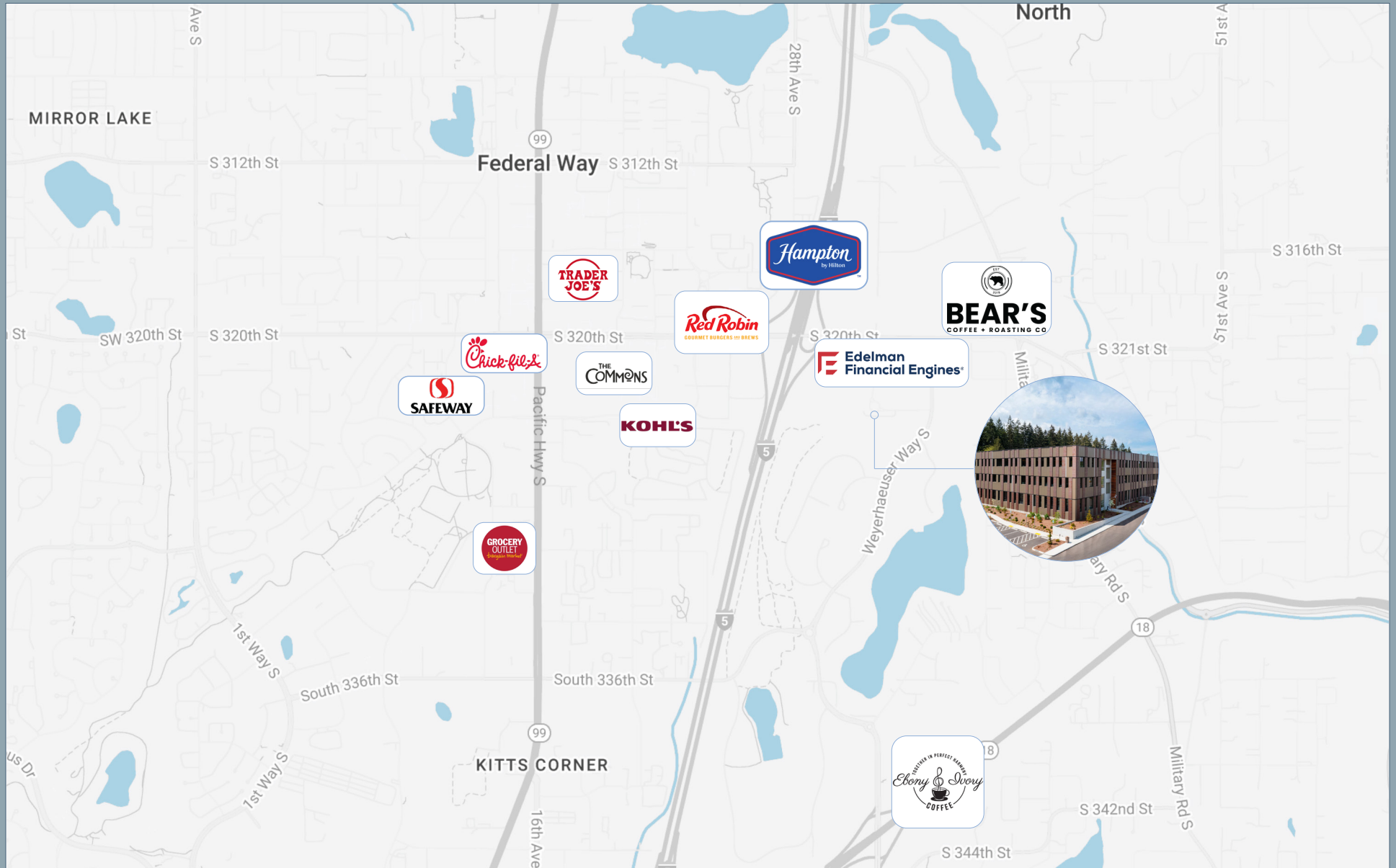
THIRD FLOOR | 55,348 SF

- Can combine with third floor for 108,948 SF total





LOCATION & AMENITIES



3201

S 323RD ST

3201 S 323RD ST, FEDERAL WAY, WA 98001

LEVI BUNDRANT

ASSOCIATE

425.409.7405

LEVI.BUNDRANT@NMRK.COM

ED MAO

ASSOCIATE

310.694.7191

EDWARD.MAO@NMRK.COM

NEWMARK



The information contained herein has been obtained from sources deemed reliable but has not been verified and no guarantee, warranty or representation, either express or implied, is made with respect to such information. Terms of sale or lease and availability are subject to change or withdrawal without notice.
9206555047 5/25