
2100 SWIFT DRIVE OAK BROOK, ILLINOIS

18,698 - 40,811 RSF Office Space Available





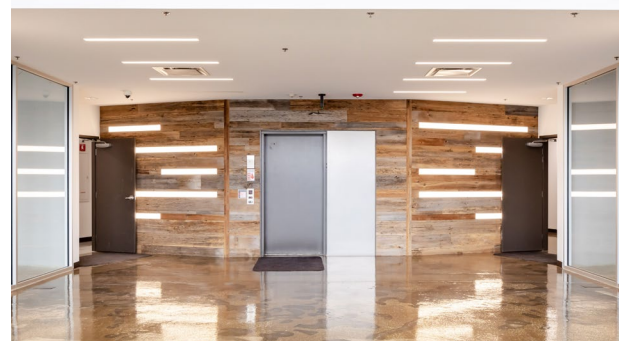
**2100 SWIFT DRIVE
OAK BROOK, IL**

3-Story office building
with open floor plans

Located within the East-
West Corridor

Great exposure on I-88 /
I-294 feeder ramps

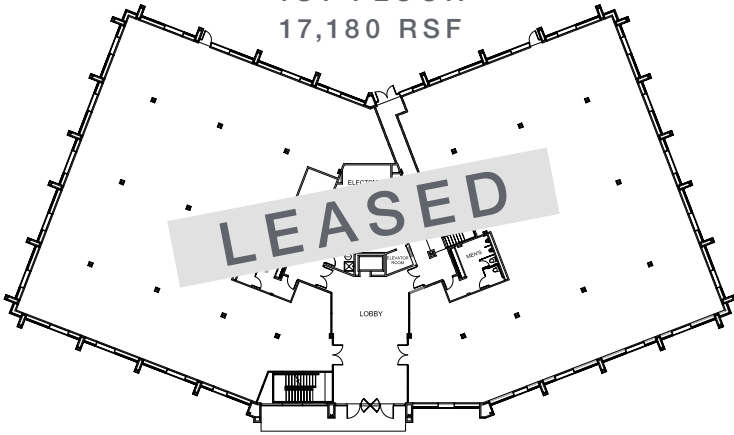
Near many amenities
including Oakbrook
Center Mall



2100 SWIFT DRIVE OAK BROOK

18,698 RSF - 40,811 RSF AVAILABLE

1ST FLOOR
17,180 RSF



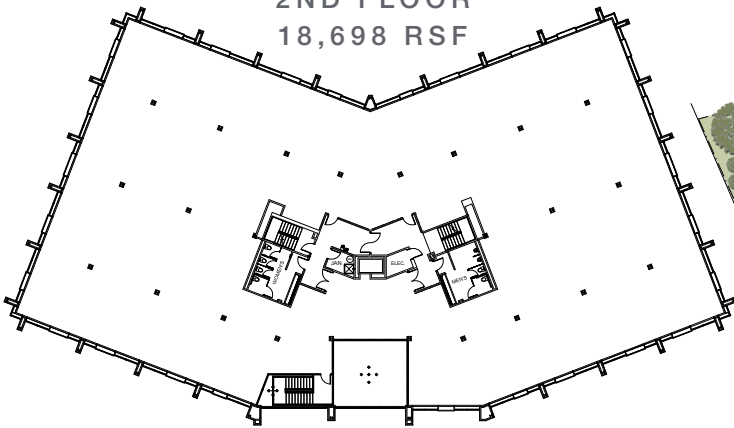
Renovated in 2017 that features a full glass entryway

Parking ratio of 6.1/1,000 includes a 3-story parking deck and surface parking

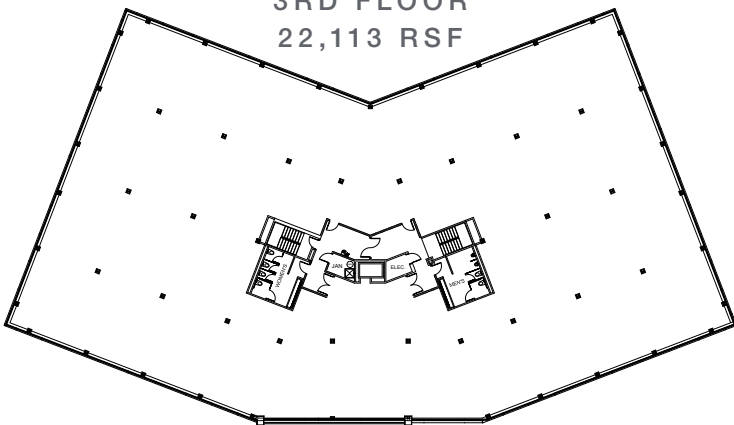
Dual power with 3-phase service and back-up generator

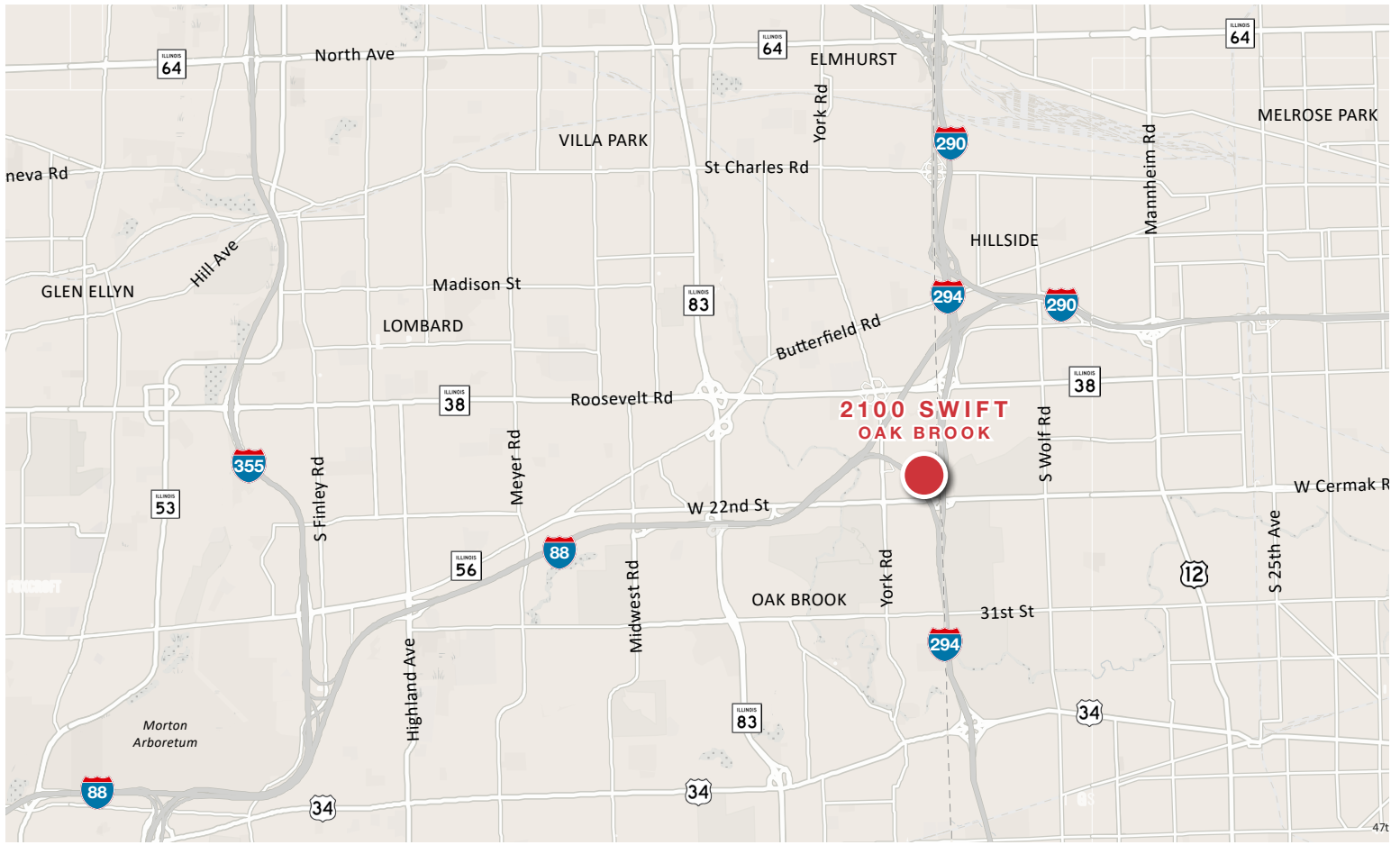
Building and monument signage opportunities

2ND FLOOR
18,698 RSF



3RD FLOOR
22,113 RSF





Contact

Patrick Kiefer
 630 693 0670
 pkiefer@hiffman.com

Dan O'Neill
 630 691 0610
 doneill@hiffman.com



One Oakbrook Terrace
 Suite 400
 Oakbrook Terrace, Illinois 60181
 +1 630 932 1234

NO WARRANTY OR REPRESENTATION, EXPRESS OR IMPLIED, IS MADE AS TO THE ACCURACY OF THE INFORMATION CONTAINED HEREIN, AND THE SAME IS SUBMITTED SUBJECT TO ERRORS, OMISSIONS, CHANGE OF PRICE, RENTAL OR OTHER CONDITIONS, PRIOR SALE, LEASE OR FINANCING, OR WITHDRAWAL WITHOUT NOTICE, AND OF ANY SPECIAL LISTING CONDITIONS IMPOSED BY OUR PRINCIPALS NO WARRANTIES OR REPRESENTATIONS ARE MADE AS TO THE CONDITION OF THE PROPERTY OR ANY HAZARDS CONTAINED THEREIN ARE ANY TO BE IMPLIED.