



Brady Sullivan Properties
 670 N. Commercial Street
 Manchester, nh 03101
 603.622.6223



Owner
BRADY SULLIVAN PROPERTIES
 MANCHESTER, NH

Project
1750 ELM STREET - SUITES
 1750 ELM STREET
 MANCHESTER NH 03101

Seals

Issues	
Date	Description

Revisions		
No.	Date	Description

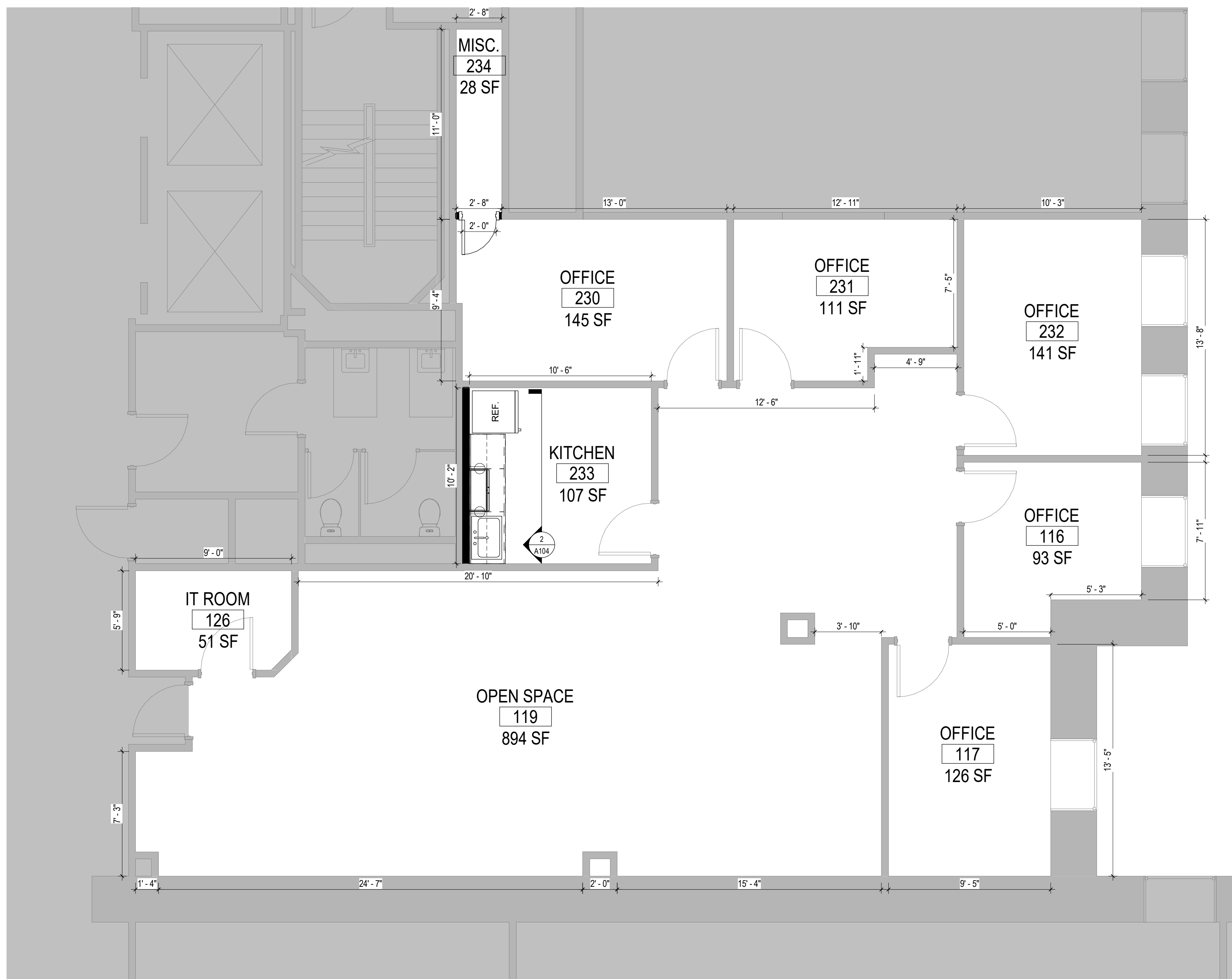
Drawing Title
CONSTRUCTION PLAN

Issue Date:	1-14-2025
Project No:	Scale: As Indicated
Project Manager:	Production Leader:
Project Architect:	Peer Reviewer:

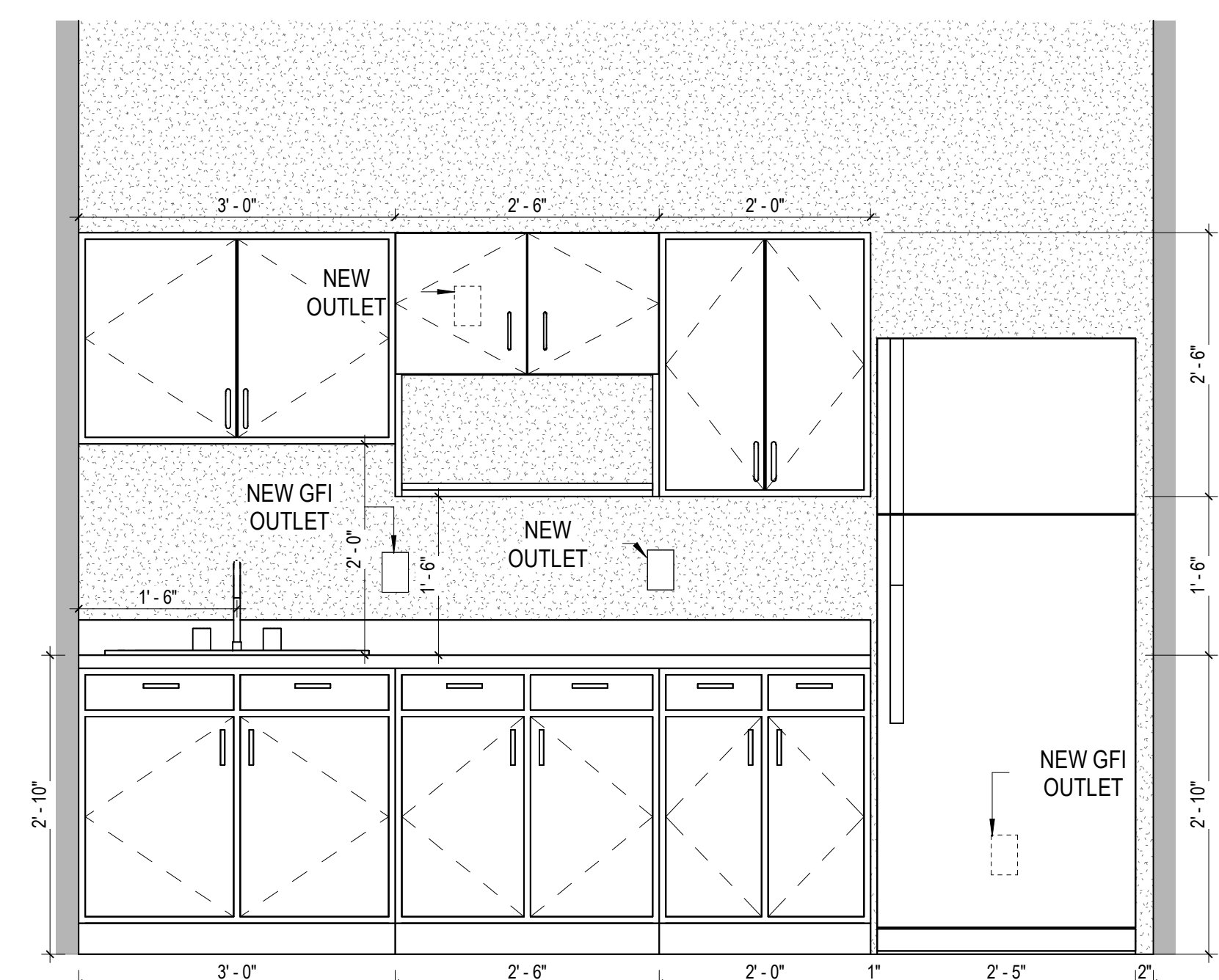
Drawing Number
A104

LEGEND

	NOT IN SCOPE		PROPOSED ITEMS (HEAVY LINE WEIGHT)
	EXISTING ITEMS		DEMO ITEMS
	NEW DOOR AND FRAME		EXISTING DOOR AND FRAME TO REMAIN



1 SUITES 105 - CONSTRUCTION PLAN
 1/4" = 1'-0"



2 PROPOSED KITCHEN CABINET LAYOUT
 3/4" = 1'-0"



3 SUITE 105 - REFLECTIVE CEILING PLAN
 1/8" = 1'-0"

7/31/2025 9:38:20 AM