

TOK

COMMERCIAL

1000 CURTIS ROAD

OFFICE CONDOS FOR SALE / 1000 N. CURTIS ROAD / BOISE, ID 83706



CONTACT

KEKAULA KANIHO

208.947.0853

kekaula@tokcommercial.com

MICHAEL BALLANTYNE

SIOR CCIM

208.947.0831

mjb@tokcommercial.com

HIGHLIGHTS

Established medical professional building in central Boise.

Located directly across from Saint Alphonsus Hospital.

ADA accessibility to all floors, with elevator access.

Nearby shopping, services and restaurants.

Directly off of the I-184 Connector.

Ample, free on-site parking.

AVAILABLE

SPACE	RSF	SALE PRICE
Suite 201	1,535 SF	\$303,930.00
Suite 302	1,136 SF	\$224,928.00
Suite 305	1,312 SF	\$259,776.00

SUBMARKET: Central Boise

BLDG TYPE: Medical Office

OF FLOORS: 3

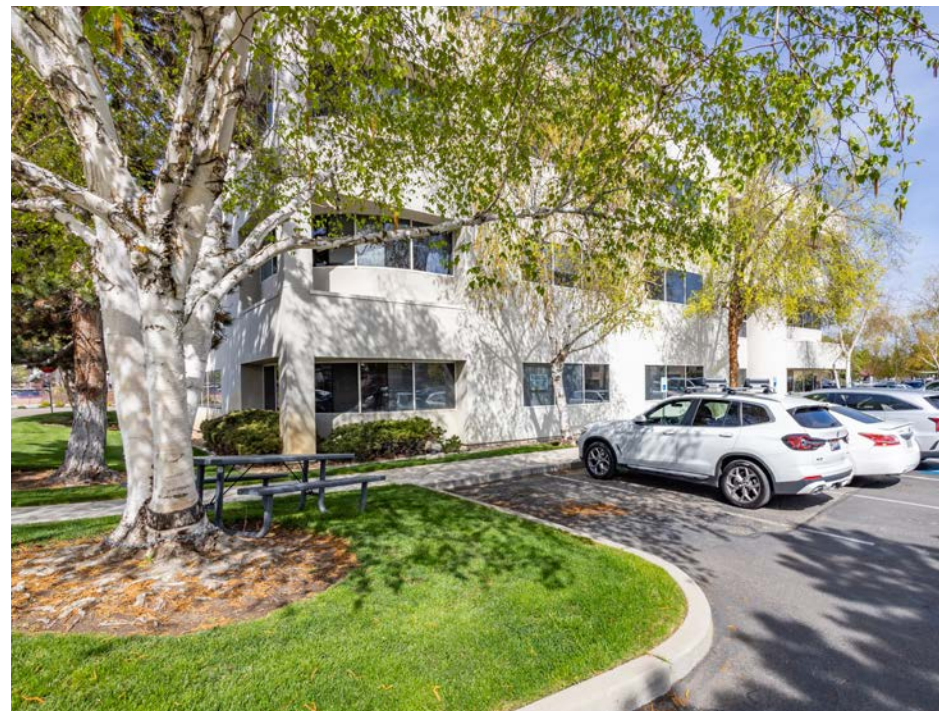
PARKING: On-Site

UPDATED: 9.30.2025

THIS PROPERTY IS EXCLUSIVELY MARKETED BY TOK BOISE LLC DBA TOK COMMERCIAL

This information was obtained from sources believed reliable but cannot be guaranteed. Any opinions or estimates are used for example only.

TOKCOMMERCIAL.COM



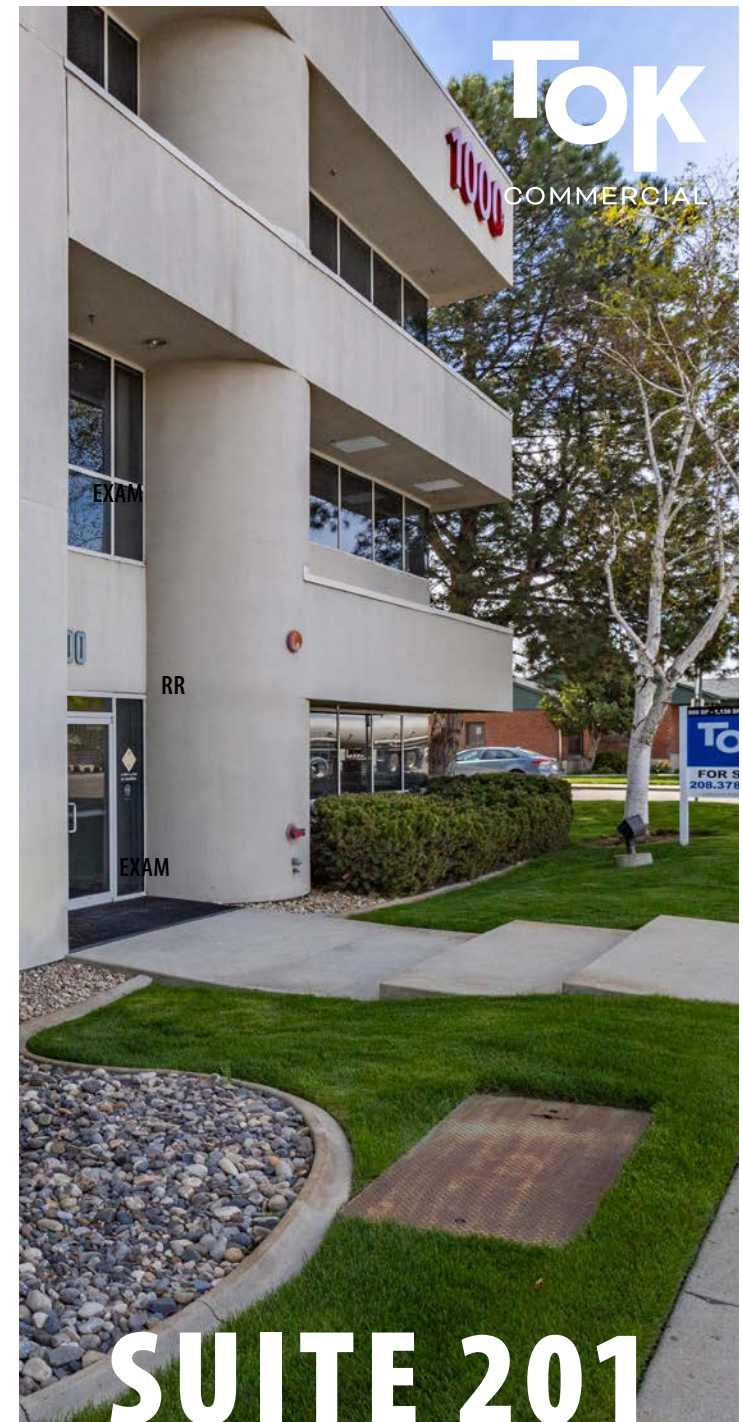
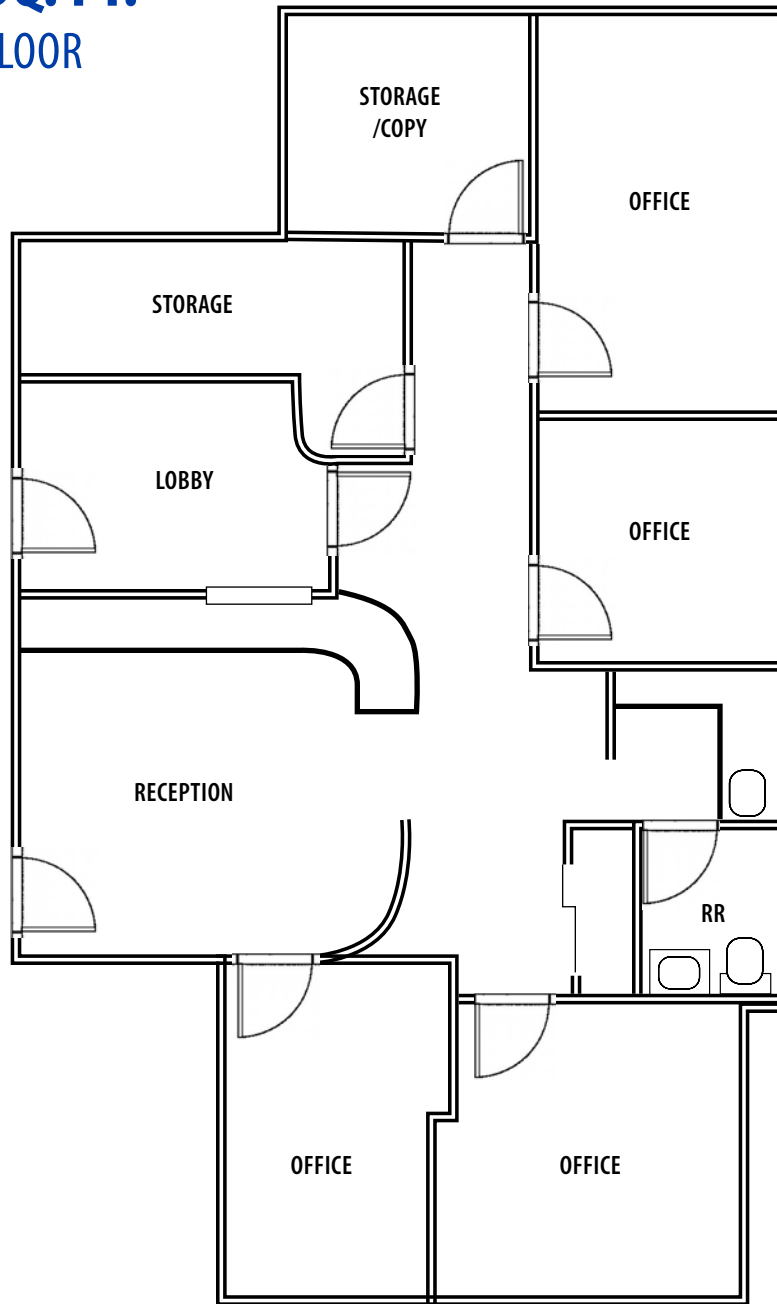
UPDATED: 9.30.2025

THIS PROPERTY IS EXCLUSIVELY MARKETED BY TOK BOISE LLC DBA TOK COMMERCIAL

This information was obtained from sources believed reliable but cannot be guaranteed. Any opinions or estimates are used for example only.

1,535 SQ. FT.

SECOND FLOOR



UPDATED: 9.30.2025

THIS PROPERTY IS EXCLUSIVELY MARKETED BY TOK BOISE LLC DBA TOK COMMERCIAL

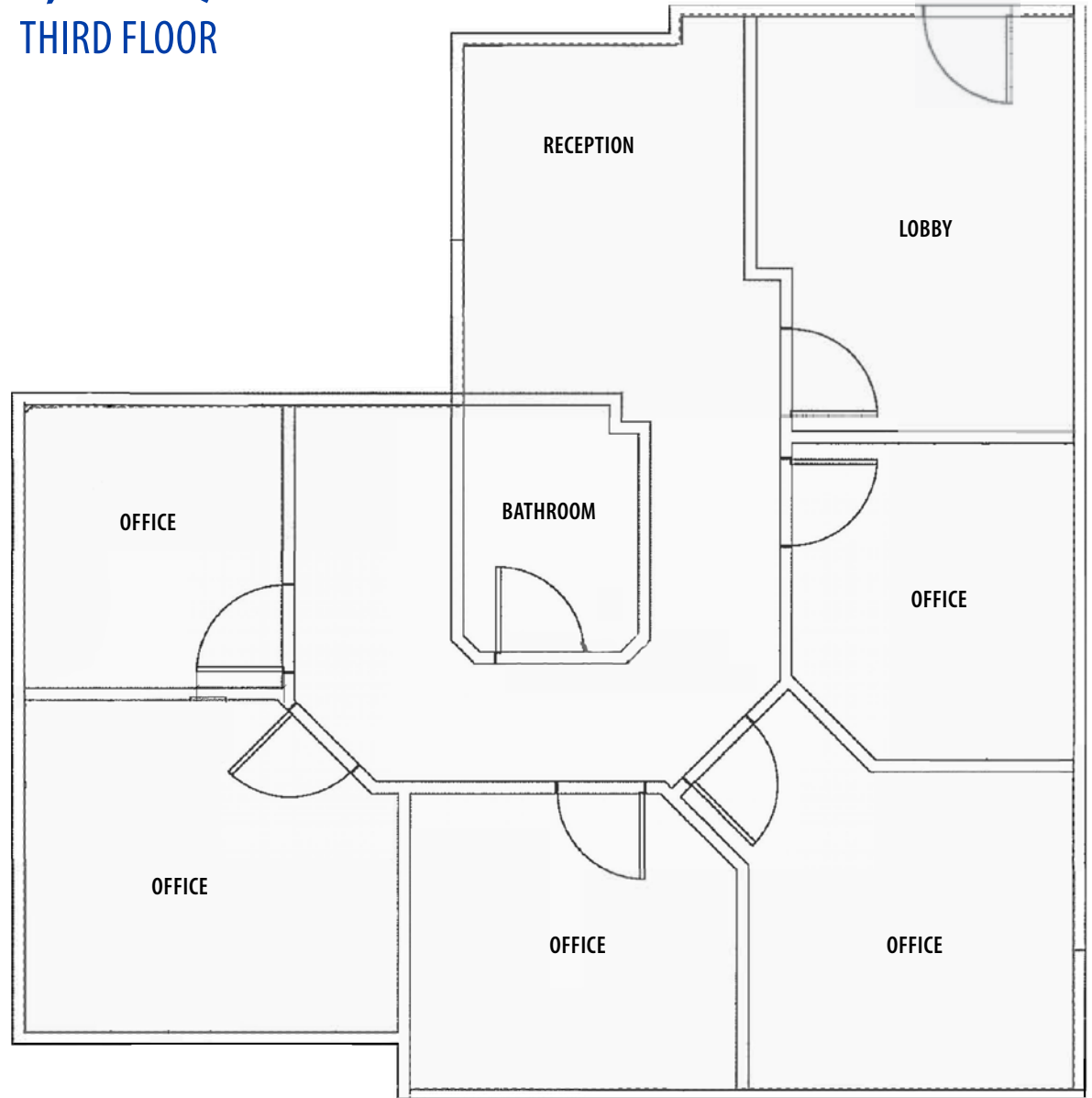
This information was obtained from sources believed reliable but cannot be guaranteed. Any opinions or estimates are used for example only.

TOKCOMMERCIAL.COM



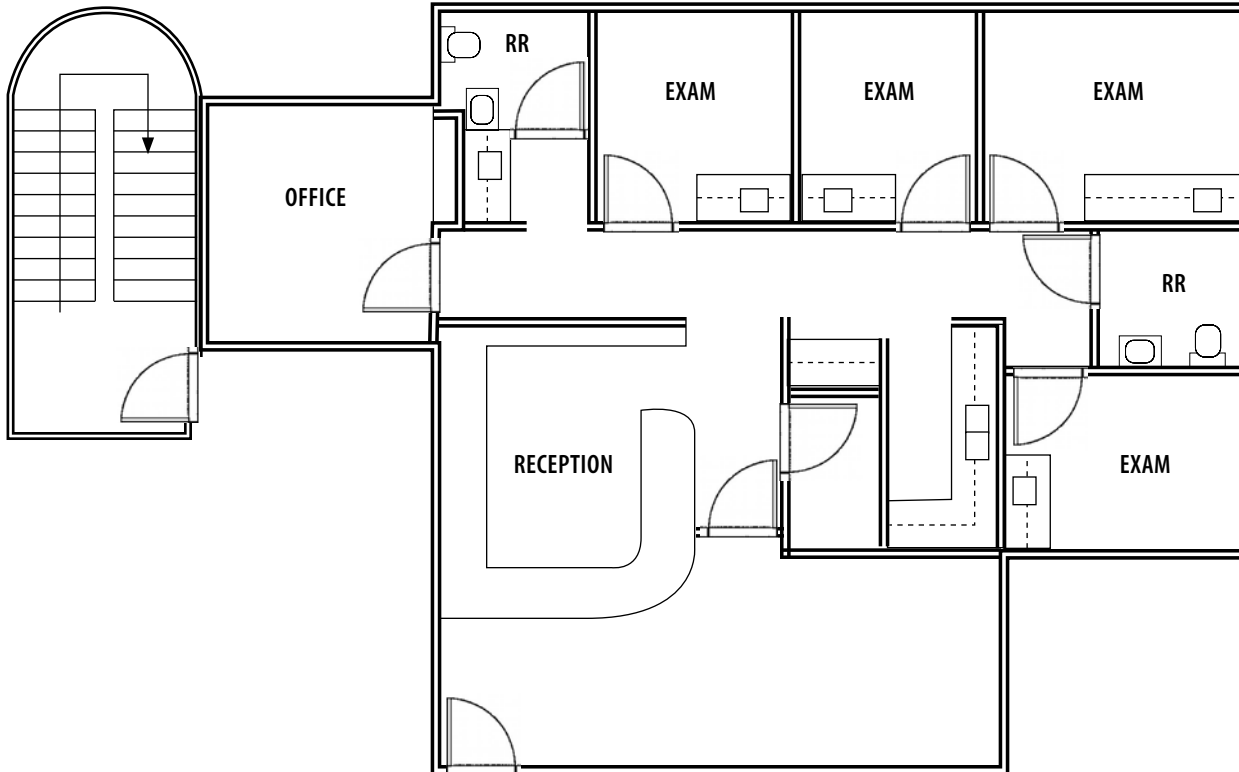
SUITE 302

1,136 SQ. FT.
THIRD FLOOR



1,312 SQ. FT.

THIRD FLOOR



SUITE 305

UPDATED: 9.30.2025

THIS PROPERTY IS EXCLUSIVELY MARKETING BY TOK BOISE LLC DBA TOK COMMERCIAL

This information was obtained from sources believed reliable but cannot be guaranteed. Any opinions or estimates are used for example only.

TOKCOMMERCIAL.COM

