

1501



INDUSTRIAL SPACE FOR SALE

1501 Lee Hill Drive

North Boulder

4,600 Square Feet Available

THE
W.W. Reynolds
COMPANIES

DETAILS

- * Units 10 & 11
- * 4,600 square feet
- * 85% food MFG, production, warehouse
- * 15% office
- * 18' clear Height
- * Two (2) 14' drive-in doors
- * Hood system, walk-in freezers & coolers
- * Extremely clean, operational food production facility; plug & play condition for a food user



SPACE NOTES



UNITS
10 AND 11

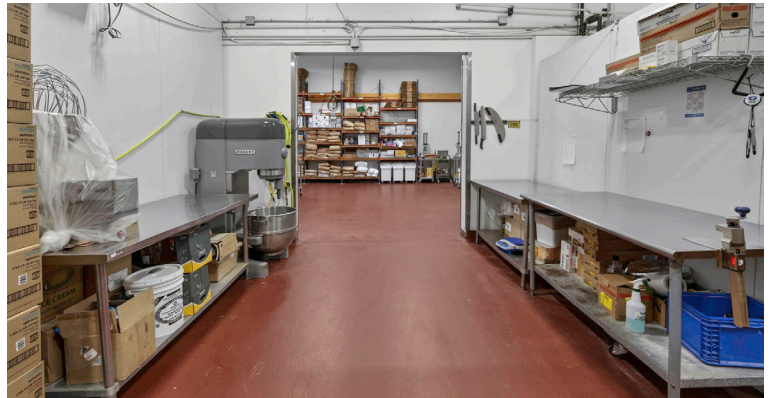


SIZE
4,600 SF

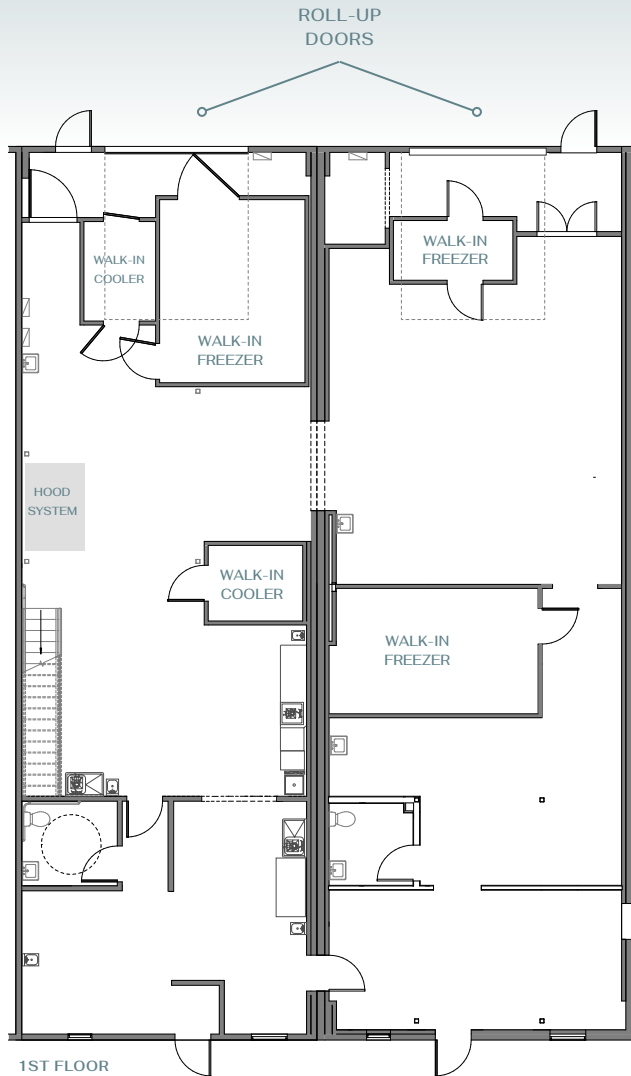


PRICE
\$2,450,000

This turnkey food production facility is built for immediate use, eliminating the time and cost of a traditional build out. Fully equipped with commercial-grade infrastructure—including walk-in freezers, refrigeration units, prep sinks, and ovens—the space supports a wide range of culinary operations from day one. Designed for efficiency and compliance, it offers a streamlined workflow ideal for catering companies, meal prep services, food startups, or established operators looking to expand. Simply bring your team and ingredients—everything else is already in place.



INFRASTRUCTURE



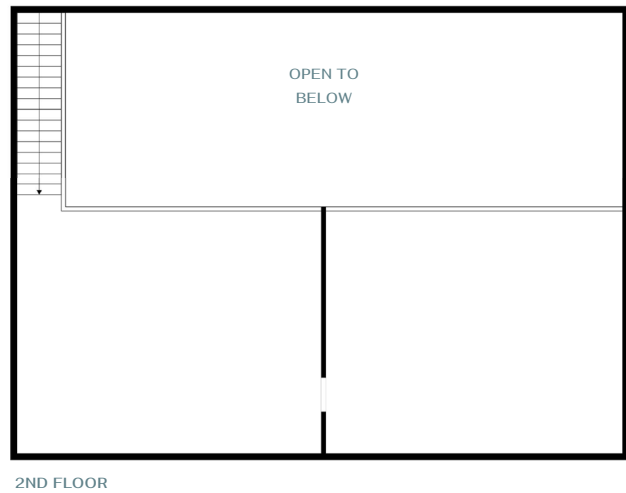
Unit 10

- † Walk-in cooler by SRC Refrigeration
6'8" x 8'8" | middle of room
- † Walk-in cooler by SRC Refrigeration
9' x 6'6" | back of room | attached to freezer
- † Walk-in freezer by SRC Refrigeration
16' x 12'10"

Unit 11

- † Walk-in freezer by Masterbilt
10'8" x 5'8"
- † Walk-in freezer by Masterbilt
17'4" x 9'10"
- † High hood low temp dish machine by ADS
- † Optional Revent gas double rack oven model 724G

**More detailed information available upon request*



UNITS
10 AND 11



SIZE
4,600 SF



PRICE
\$2,450,000

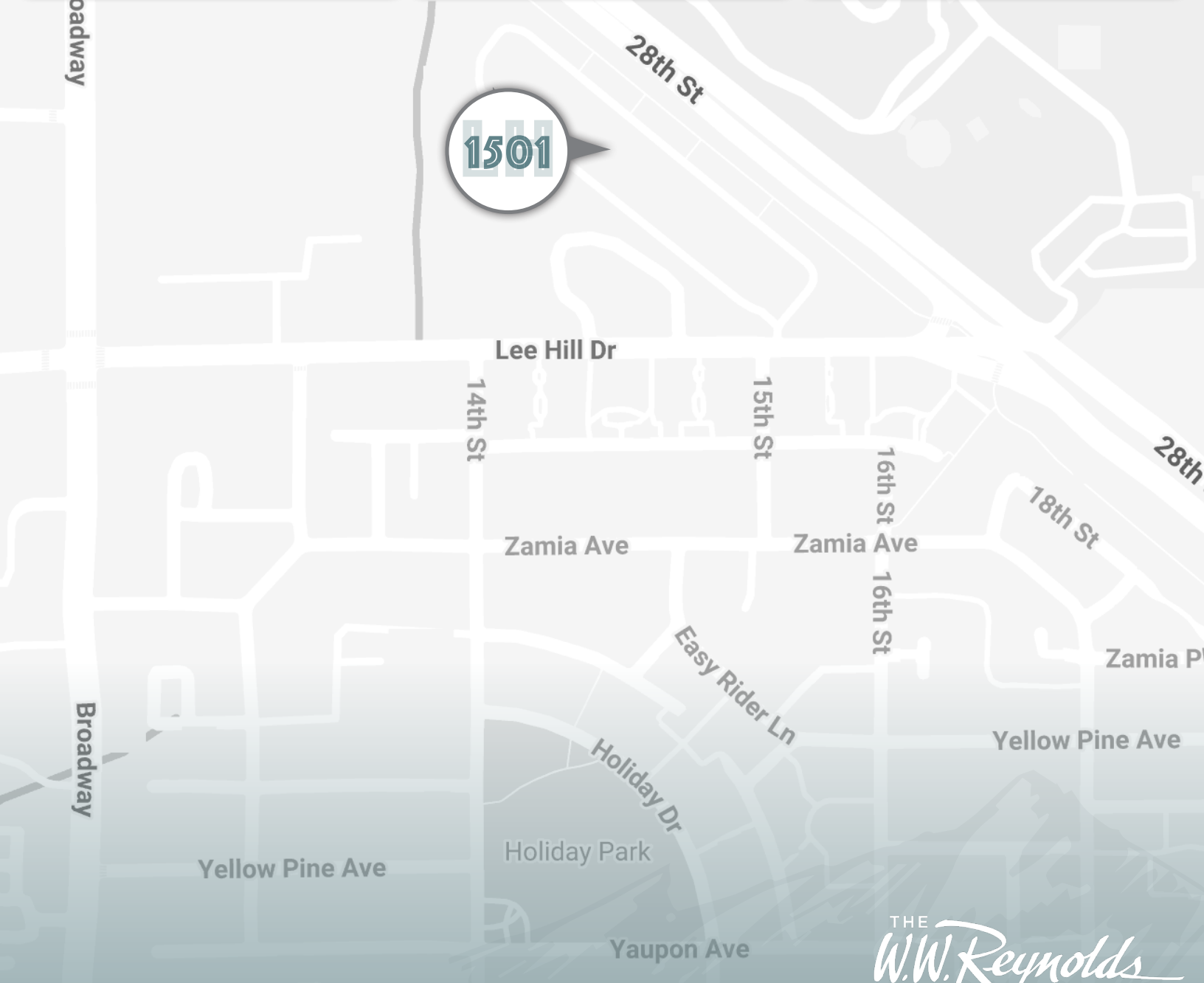
Chad Henry
chenry@wwreynolds.com

Drew Weiman
drew@wwreynolds.com

THE
W.W. Reynolds
COMPANIES



LOCATION



Information herein has been obtained from sources deemed reliable, however its accuracy cannot be guaranteed. The user is required to conduct their own due diligence and verification.