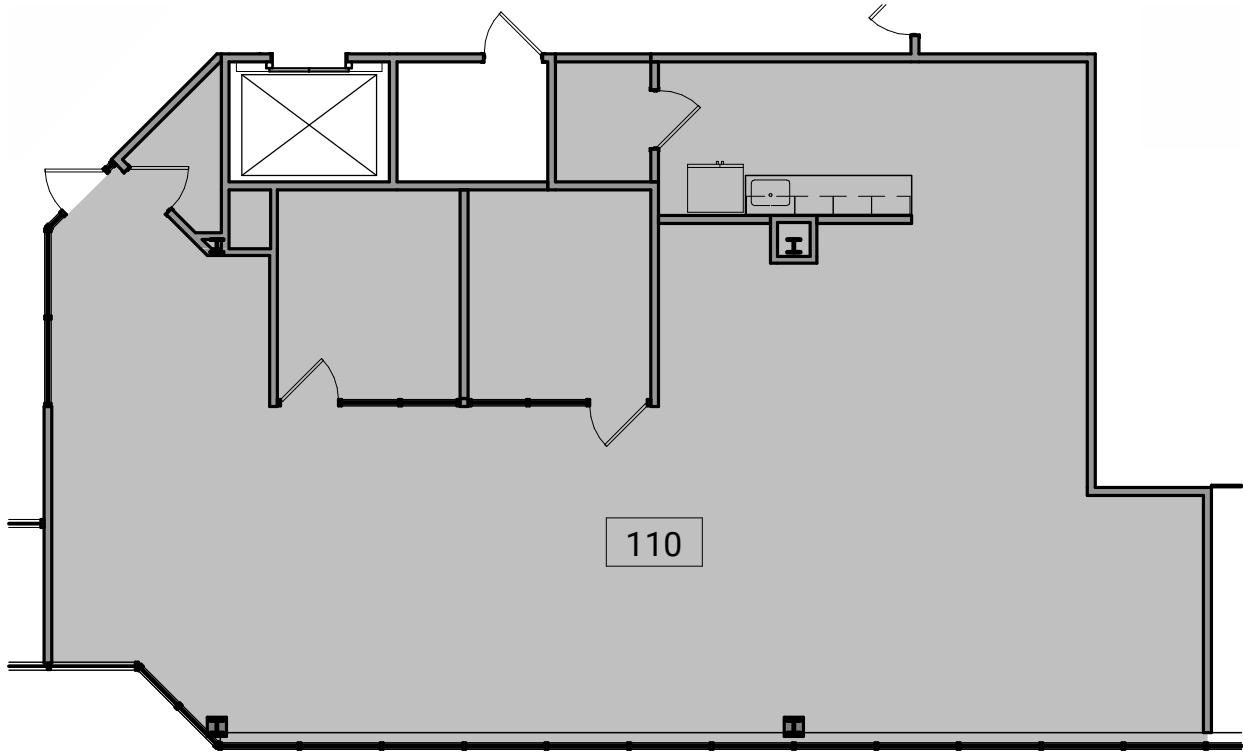


FOR LEASE

# Burlington Office Center III

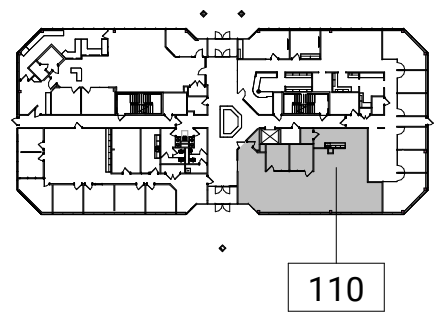


305 E. Eisenhower, Ann Arbor, MI 48108



2 Suite 110 - Partial Level 1 Existing Floor Plan

10' 1" = 10'-0"



1 Key Plan - Level 1

80' 1" = 80'-0"

FOR MORE INFORMATION CONTACT KAREN O'NEIL  
Commercial Leasing Associate | [koneil@oxfordcompanies.com](mailto:koneil@oxfordcompanies.com) | 734.665.6500

A LICENSED REAL ESTATE BROKER. ALL INFORMATION FURNISHED IS FROM SOURCES DEEMED RELIABLE. NO WARRANTY OR REPRESENTATION IS MADE AS TO THE ACCURACY THEREOF AND SAME IS SUBMITTED SUBJECT TO ERRORS, OMISSION OF PRICE, RENTAL, OR OTHER CONDITIONS, PRIOR TO SALE, LEASE OR FINANCING OR WITHDRAWAL

Dwg Date

04/21/2025