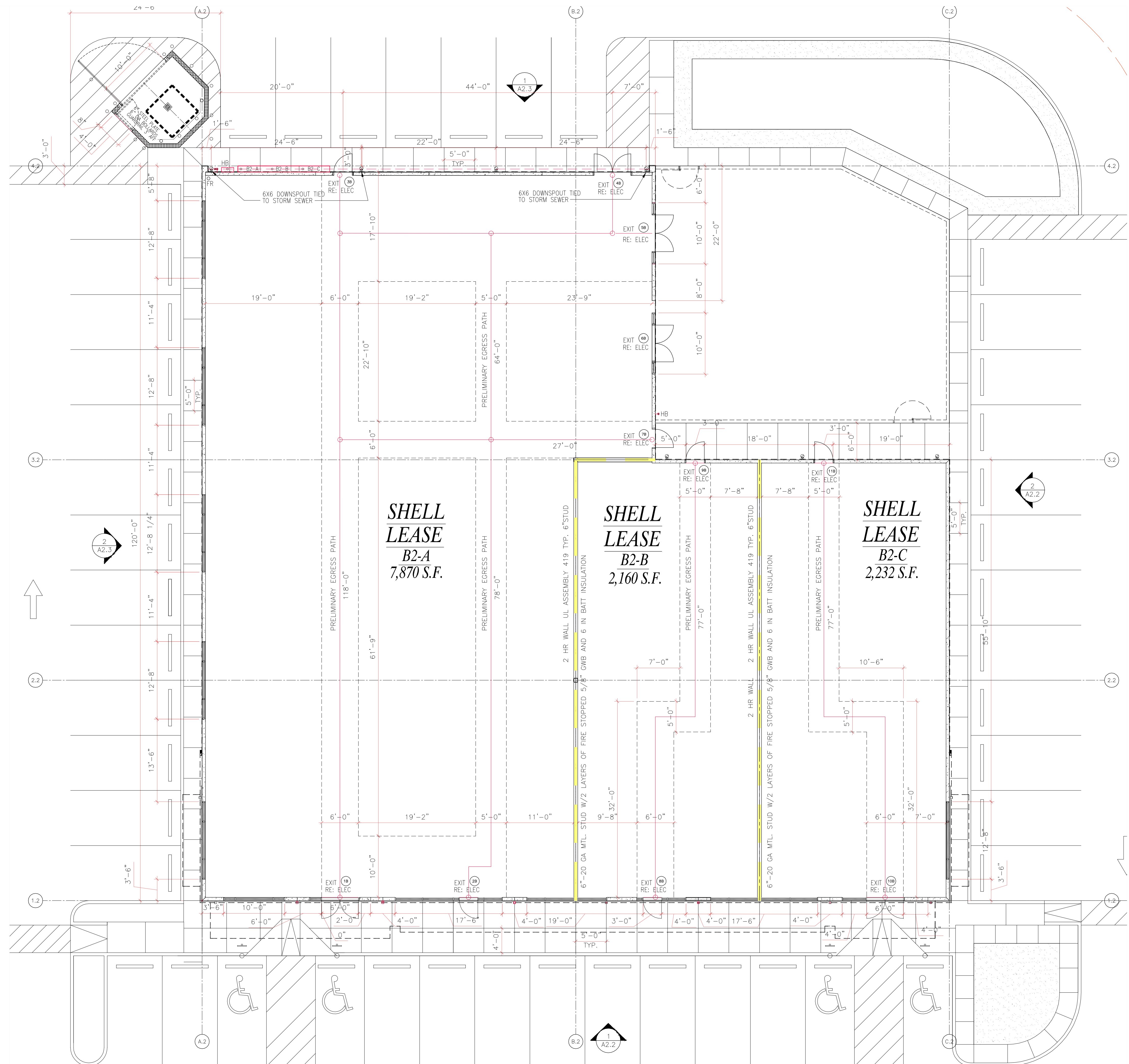


BUILDING 2 DOOR SCHEDULE		1B	2B	3B	4B	5B	6B	7B	8B	9B	10B	11B	
DOOR NUMBER		1B	2B	3B	4B	5B	6B	7B	8B	9B	10B	11B	
DOOR OPENING SIZE		3'-0" x 7'-0"	3'-0" x 7'-0"	3'-0" x 7'-0"	3'-0" x 7'-0"	3'-0" x 7'-0"	3'-0" x 7'-0"	3'-0" x 7'-0"	3'-0" x 7'-0"	3'-0" x 7'-0"	3'-0" x 7'-0"	3'-0" x 7'-0"	
THICKNESS		1/2"	1/2"	1/2"	1/2"	1/2"	1/2"	1/2"	1/2"	1/2"	1/2"	1/2"	
HINGE SIDE		RH	RH	LF	LF	RH	RH	LF	LF	RH	RH	LF	
HOLLOW METAL DOOR		*	*	*	*	*	*	*	*	*	*	*	
INSULATED OVERHEAD MTL/GLASS		*	*	*	*	*	*	*	*	*	*	*	
ALUMINUM & TEMPERED GLASS		*	*	*	*	*	*	*	*	*	*	*	
HM STEEL FRAME CAST-IN		*	*	*	*	*	*	*	*	*	*	*	
ALUMINUM FRAME		*	*	*	*	*	*	*	*	*	*	*	
FINISH		ANOD. ALUM. RE: FINISHED.	ANOD. ALUM. RE: FINISHED.	ENAMEL PAINT. RE: FINISHED.	ENAMEL PAINT. RE: FINISHED.	ANOD. ALUM. RE: FINISHED.	ANOD. ALUM. RE: FINISHED.	ANOD. ALUM. RE: FINISHED.	ENAMEL PAINT. RE: FINISHED.	ENAMEL PAINT. RE: FINISHED.	ENAMEL PAINT. RE: FINISHED.	ENAMEL PAINT. RE: FINISHED.	
W WEATHERSTRIP		W	W	W	W	W	W	W	W	W	W	W	
S SOUND STC RATING		NR	NR	30	30	NR	NR	NR	NR	NR	NR	NR	
FR FIRE RATING		NR	NR	30	30	NR	NR	NR	NR	NR	NR	NR	
PAIRS OF BUTTS		1 1/2"	1 1/2"	1 1/2"	1 1/2"	1 1/2"	1 1/2"	1 1/2"	1 1/2"	1 1/2"	1 1/2"	1 1/2"	
ADA COMPLIANT PUSH BAR		*	*	*	*	*	*	*	*	*	*	*	
PULL HANDLE		*	*	*	*	*	*	*	*	*	*	*	
PUSH HANDLE		*	*	*	*	*	*	*	*	*	*	*	
BOTTOM FLUSH BOLT		*	*	*	*	*	*	*	*	*	*	*	
TOP FLUSH BOLT		*	*	*	*	*	*	*	*	*	*	*	
SILENCER		*	*	*	*	*	*	*	*	*	*	*	
ASTRAGAL		*	*	*	*	*	*	*	*	*	*	*	
CLOSER		*	*	*	*	*	*	*	*	*	*	*	
THRESHOLD		*	*	*	*	*	*	*	*	*	*	*	
BOTTOM STOPS		*	*	*	*	*	*	*	*	*	*	*	
MORTICE CYLINDER		*	*	*	*	*	*	*	*	*	*	*	
SEAL		*	*	*	*	*	*	*	*	*	*	*	
LOCKSET		*	*	*	*	*	*	*	*	*	*	*	
ARMOR PLATE		*	*	*	*	*	*	*	*	*	*	*	
ADA APPROVED LATCH LEVER		*	*	*	*	*	*	*	*	*	*	*	
SOLID INT. CORE		*	*	*	*	*	*	*	*	*	*	*	
FLOOR STOPS		*	*	*	*	*	*	*	*	*	*	*	
EXIT PANIC		*	*	*	*	*	*	*	*	*	*	*	
EXTERIOR KICK PLATE		*	*	*	*	*	*	*	*	*	*	*	
OUTSIDE CALL BUTTON		*	*	*	*	*	*	*	*	*	*	*	
RIM CYLINDER		*	*	*	*	*	*	*	*	*	*	*	
OVER HEAD STOPS		*	*	*	*	*	*	*	*	*	*	*	
BOTTOM SWEEP		*	*	*	*	*	*	*	*	*	*	*	
ELECTRONIC CARD READER W/ EMERGENCY EXIT, N.I.C.		*	*	*	*	*	*	*	*	*	*	*	
RAIN DRIP		*	*	*	*	*	*	*	*	*	*	*	
HARDWARE SET		1B	2B	3B	4B	5B	6B	7B	8B	9B	10B	11B	
TYPICAL ALUM/GLASS ENTRY		2 EA. SARGENT MORT. CYL. #47-41XAR US 26D VERIFY, AND COORDINATE WITH STANDARD DOOR SYSTEMS											
TYPICAL EXT HM / SGL		3 EA. HINGES HAGAR BB1279 4 1/2x 4USPKNRP 1 EA MORT. LOCK SARGENT 8225 LNB US26D 1 EA CLOSER SARGENT EN1430 UO X SNB 1 EA THRESHOLD NGP 896V-36" 1 EA SEAL-NGP 160V X LENGIN REQ 1 EA SWEEP-NGP 200N-36" 1 EA RAINDRIP-NGP 16AD 3'-4"											
RAS TO REVIEW MINIMUM HARDWARE FOR ADA COMPLIANCE													
PROVIDE GRAPHIC NOTICE- NEXT TO OR ON DOOR 40"XFF EXIT DOOR TO REMAIN UNLOCKED DURING BUSINESS HOURS													



**1 BUILDING 2 FLOOR PLAN**  
A1.3 SCALE: 1/8" = 1' - 0"

**CANADIAN PLAZA  
BUILDINGS 1&2**  
3535 CANADA DRIVE  
LA PORTE, TEXAS 77539

**Longevity Realty Partners**  
**NO CANADIANS, LLC**  
(281) 236-3535  
6400 WESTPARK DR, STE 470  
HOUSTON, TX 77057

ARCHITECT  
**COVARRUBIAS  
ARCHITECTS P.L.L.C.**  
5310 QUEENSLOCH DRIVE  
HOUSTON, TEXAS 77096  
(713) 705-9608

SEAL  
REGISTERED ARCHITECT  
EDMUNDO R. COVARRUBIAS  
13625  
STATE OF TEXAS  
April 3, 2025

Expiration Date:  
31 July 2025

REVISIONS  
CANOPY REDESIGN  
DUMPSTER REDESIGN

**A-1.3**  
Issue Date: April 3, 2025