



# FOR LEASE

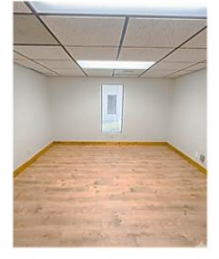
SPACE AVAILABLE  
**400**  
SQFT [Approx]

RENT  
**\$850**  
/PER MONTH

LEASE TYPE  
**Full Lease /  
Gross Lease**

OCCUPANCY  
**IMMEDIATE**

**BLDG A - SUITE 207 - 112 NORTH UNIVERSITY ROAD SPOKANE VALLEY, WA**



## HIGHLIGHTS

- Professional Office Building featuring a sky bridge connection.
- High-visibility monument signage available in front of the building.
- 24-hour video surveillance for enhanced visibility and security.
- Abundant natural light with energy-efficient LED lighting.
- High Ceilings enhancing openness and natural light.
- Professional waiting area with welcoming client entry.
- ADA-accessible building entry and common areas.
- Open office seating and 1 private office room.
- Abundant On-Site Parking for employees and visitors
- High-Speed Optic Fiber Internet infrastructure in place.
- After-hours secure entry capability.

## CONTACT

**Suresh Muthuswamy**

[suresh@asaprs.com](mailto:suresh@asaprs.com)

Cell: 425.442.6431

**Sathesh Natarajan**

Cell: 425.222.2530

[contact@asaproperties.net](mailto:contact@asaproperties.net)

[www.asaproperties.net](http://www.asaproperties.net)



# FOR LEASE

<b>SPACE AVAILABLE</b> <b>400</b> SQFT [Approx]	<b>RENT</b> <b>\$850</b> /PER MONTH	<b>LEASE TYPE</b> <b>Full Lease/ Gross Lease</b>	<b>OCCUPANCY</b> <b>IMMEDIATE</b>
---	---	---	--------------------------------------

**BLDG A - SUITE 207 - 112 NORTH UNIVERSITY ROAD SPOKANE VALLEY, WA**

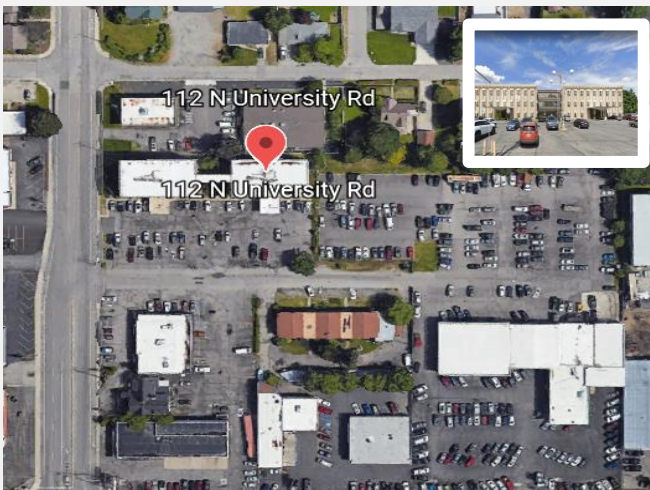
## FLOOR PLAN



 [TOUR VIDEO](#)

 [LOOPNET](#)

## LOCATION



## CONTACT

**Suresh Muthuswamy**  
[suresh@asaprs.com](mailto:suresh@asaprs.com)  
Cell: 425.442.6431

**Sathesh Natarajan**  
Cell: 425.222.2530

[contact@asaproperties.net](mailto:contact@asaproperties.net)  
[www.asaproperties.net](http://www.asaproperties.net)