



Industrial For Sale

Contact Agents
for Pricing

Rusty Bollow, SIOR, CCIM, MRED
Executive Vice President
+1 801 633 4800
rusty.bollow@colliers.com

Bobby Stevens, SIOR
Senior Vice President
+1 801 696 9617
bobby.stevens@colliers.com

Ethan Wallace
Associate
+1 901 497 0790
ethan.wallace@colliers.com

Colliers
6440 S. Millrock Dr., Suite 500
Salt Lake City, UT 84121
Main: +1 801 947 8300
colliers.com

1079 Legacy View St

Salt Lake City, UT 84104

Property Highlights

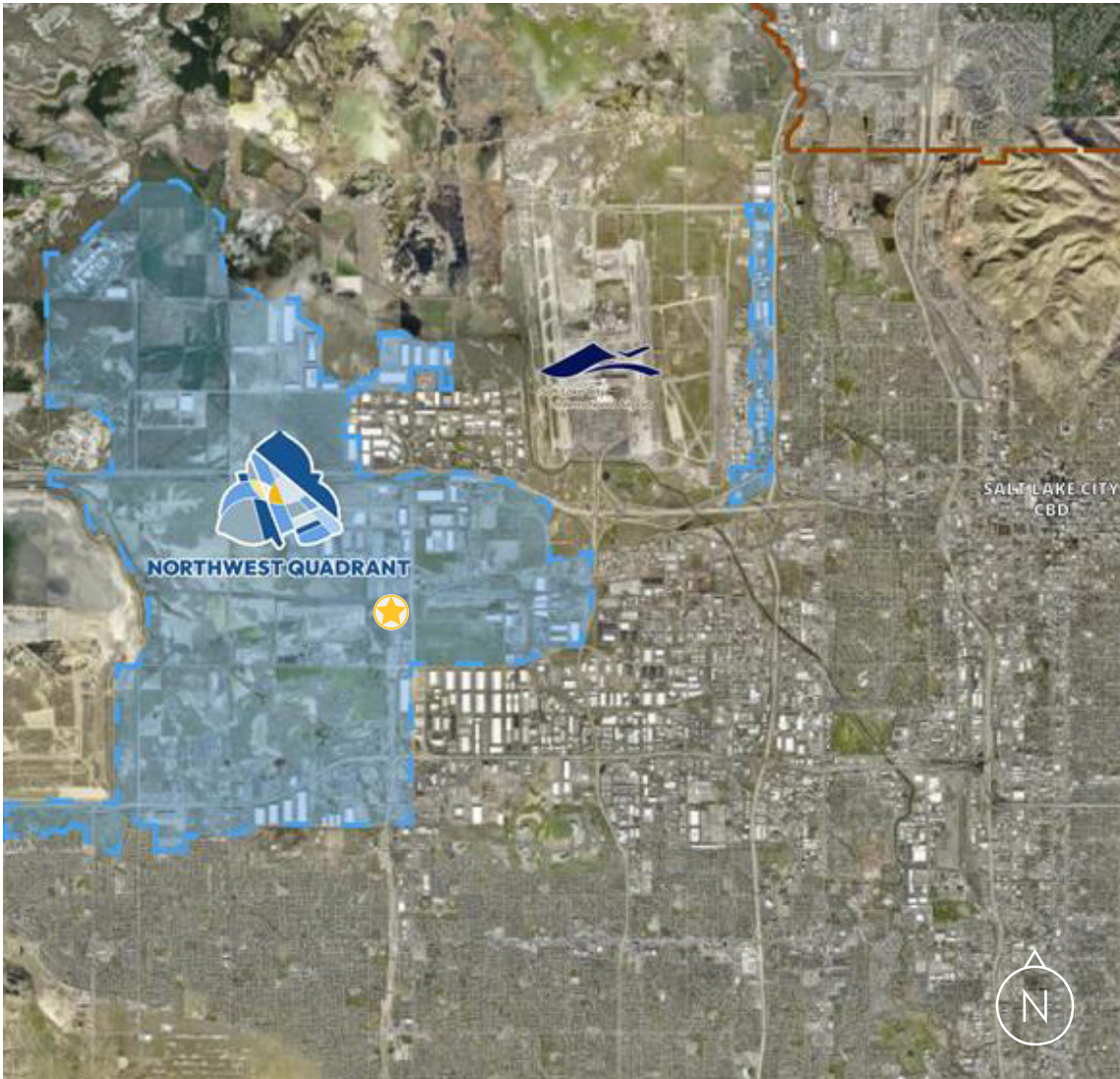
- 1.24 AC located in the Utah Inland Port Northwest Quadrant
- Parcels APN #: 14114270200000
- M-1 Zoning
- Fully fenced and secured
- 5 Minutes to I-80 and Highway 201 via 5600 West
- 10 Minutes to Salt Lake City International Airport



Utah Inland Port Authority Northwest Quadrant

With the amazing growth of Utah, it was essential to grow with intention and consideration of critical infrastructure to support that growth. The Utah Inland Port Authority (UIPA) was created to lead and implement sustainable logistics solutions to develop structures and systems to support the transport of critical goods while also working closely with local communities, investing in education/training and job creation.

Salt Lake City's North West Quadrant is 16,000 acres set in a prime location between two major interstate freeways, vital national railways, and the Salt Lake City International Airport and contains intermodal facilities, warehouse and distribution centers, a skilled workforce and supportive infrastructure.



Demographics

Within 5 Miles



Population

117,397



Median Age

32.2



Average Household Income

\$102,403



Median Household Income

\$84,798



Certificate or Degree

27.8%

