

WOODOAK AT THE GROVE 1100 NAVAHO DRIVE Raleigh, NC 27609



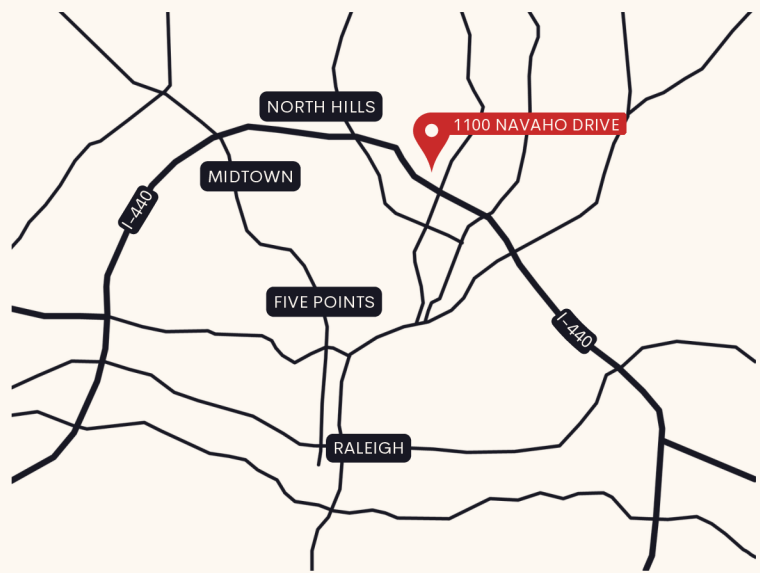
SUITE 122 | APPROX. 505 RSF

SUITE FEATURES

- \$23.00/SF full-service gross.
- Reception area.
- Private office.
- Exterior and interior entrances.

PROPERTY FEATURES

- ~4:1000 parking ratio.
- Highly desirable location at the epicenter of two major developments (over \$1B each):
 - The Exchange.
 - North Hills Innovation District.
- Convenient location:
 - 0.3 miles from I-440 highway.
 - 0.2 miles from Duke Raleigh Hospital.
 - 0.5 miles from Midtown East.
 - 1.2 miles from North Hills Shopping Center.



CONTACT US TODAY

CALL US AT
(919) 828-9999

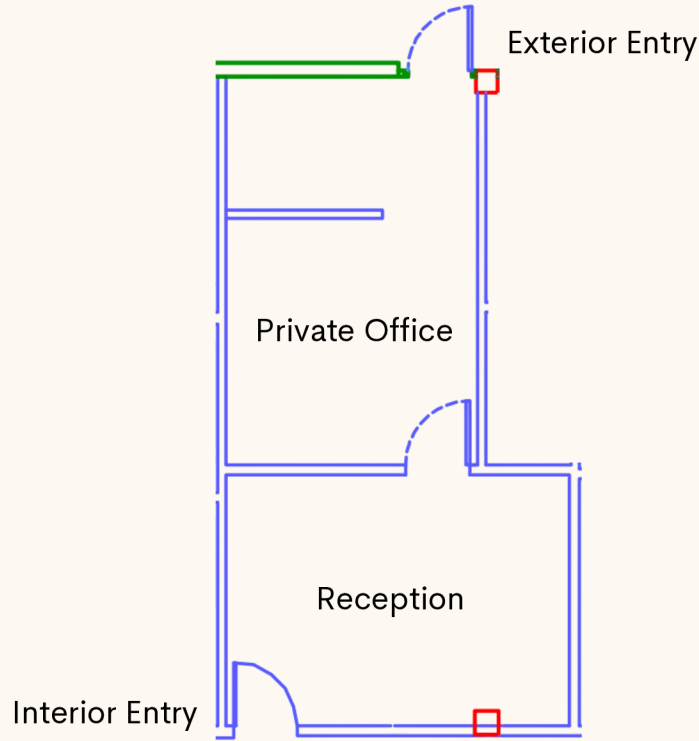
VISIT US AT
HobbsProperties.com

BROKERAGE • LEASING
PROPERTY MANAGEMENT
CONSTRUCTION • DEVELOPMENT



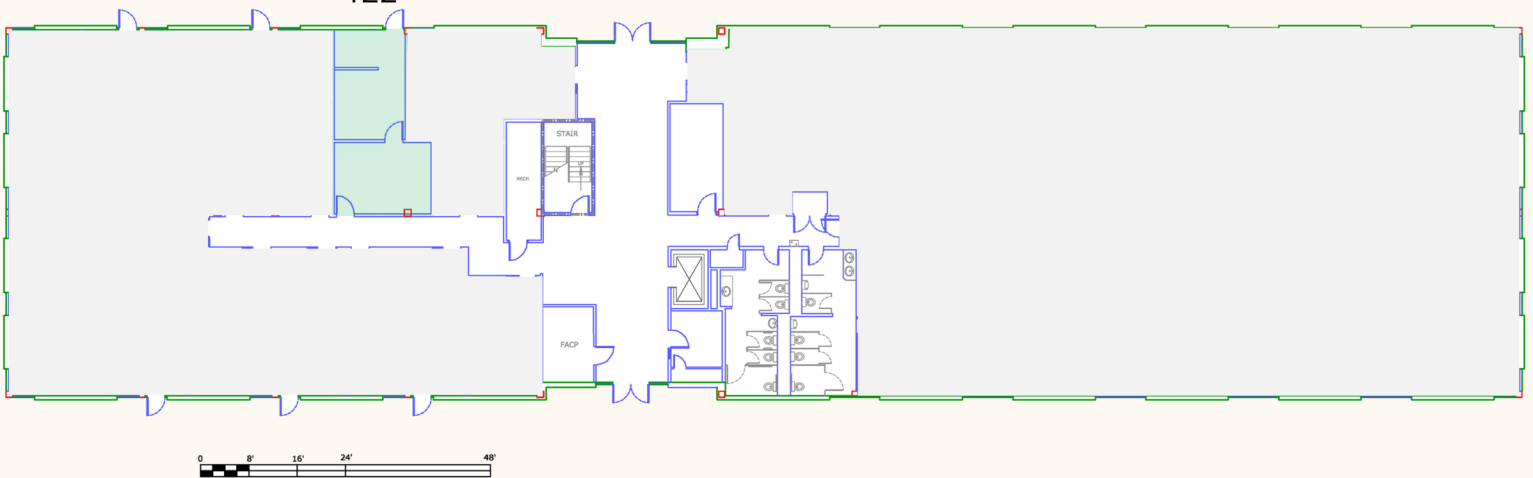
FLOORPLANS

SUITE OUTLINE



FLOOR PLATE

Suite
122



CONTACT US TODAY

CALL US AT
(919) 828-9999

VISIT US AT
HobbsProperties.com

BROKERAGE • LEASING
PROPERTY MANAGEMENT
CONSTRUCTION • DEVELOPMENT

