

FOR LEASE

Owned and Operated by 

GWINNETT FOREST BUSINESS CENTER

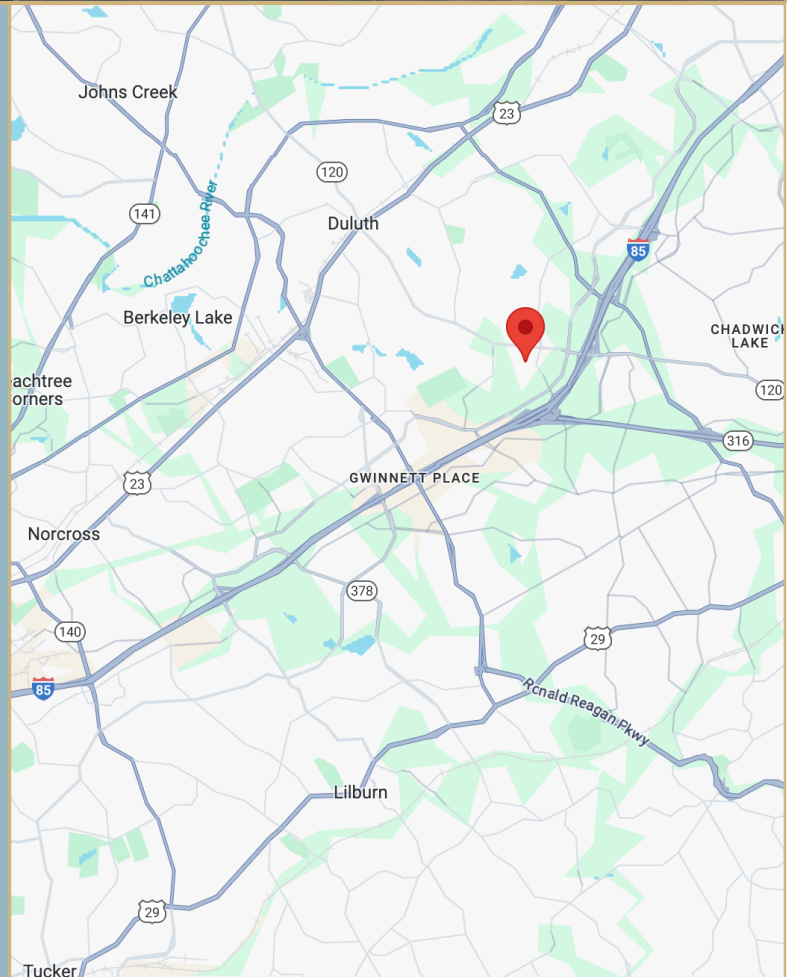
2150 Boggs Road | Building 600 | Suite 600 | Duluth, GA 30096

26,440 SF



PROPERTY HIGHLIGHTS

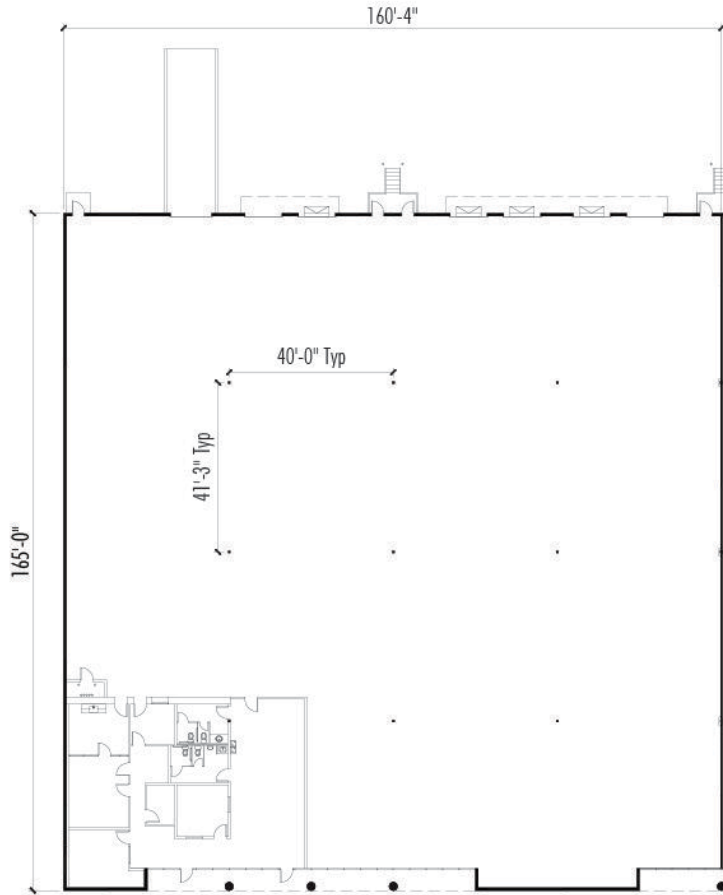
Building Size	85,787 SF
Available	26,440 SF
Office	2,645 SF
Clear Height	24' Minimum
Column Spacing	41' wide x 42' deep
Building Depth	165'
Dock Doors	6 (9' x 10')
Drive-In Door	1 (10' x 12')
Sprinkler	Yes
Auto Parking	1/1,000 SF
Truck Court	120' Deep
Zoning	Light Industrial (LI)



LEASING INFO & CONTACT

Walker Adams (404) 812-4066 / wadams@naibg.com
Charlie Adams (404) 812-4037 / cadams@naibg.com





Warehouse	23,795 SF
Office	2,645 SF
Total	26,440 SF

