



OFFICE SPACE FOR LEASE IN WINTER PARK

398 W Morse Blvd, Winter Park, FL 32789

Prominent two-story office building nestled in the heart of Winter Park

PROPERTY HIGHLIGHTS

- Beautifully maintained property in the heart of Winter Park
- Outstanding visibility along Morse Blvd, one of Winter Park's main thoroughfares
- C-2 zoning allows for a wide range of commercial uses
- Incredible signage opportunity at a hard corner in the heart of Winter Park's financial district
- Within close proximity to area restaurants and shopping on Park Avenue
- Within walking distance to the Winter Park Sunrail Station



ASKING RATE:

Negotiable



AVAILABILITY:

Suite 125: 3,623± RSF
Suite 100: 4,414± RSF



ZONING:

C-2



PARKING:

9 Spaces Available



HARBERT

REALTY SERVICES

DAMIEN MADSEN

dmadsen@harbertrealty.com | 407.256.2844

JOSH SMITH, SIOR

jsmith@harbertrealty.com | 407.739.8602

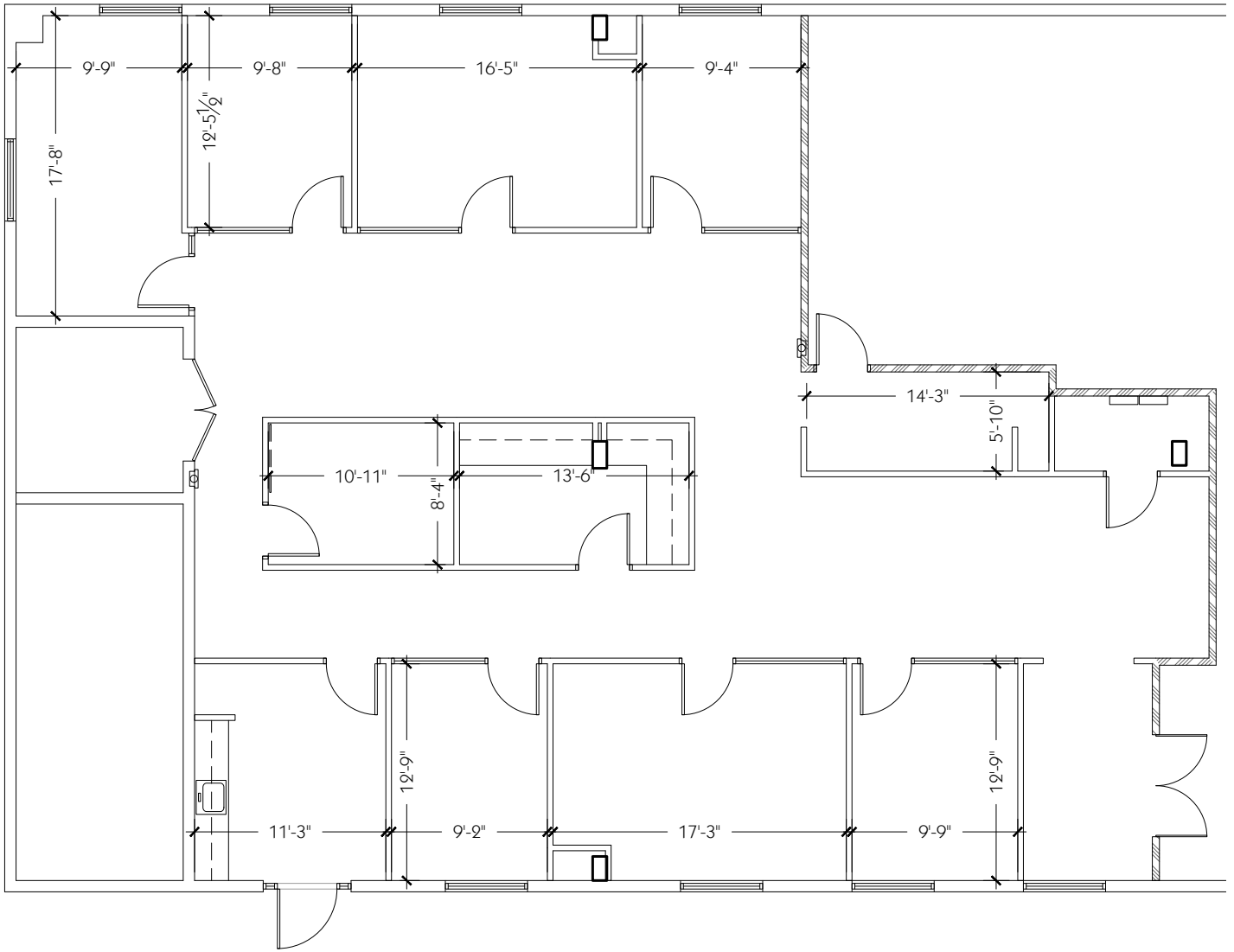
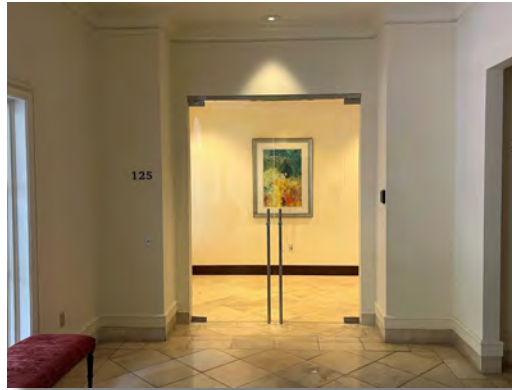
*For More Information: HarbertRealty.com
400 S Park Ave, Suite 225, Winter Park, FL 32789*

OFFICE BUILDING FOR LEASE

398 W Morse Blvd, Winter Park, FL 32789

FIRST FLOOR

SUITE 125 - 3,623± RSF



HARBERT
REALTY SERVICES

DAMIEN MADSEN

dmadsen@harbertrealty.com | 407.256.2844

JOSH SMITH, SIOR

jsmith@harbertrealty.com | 407.739.8602

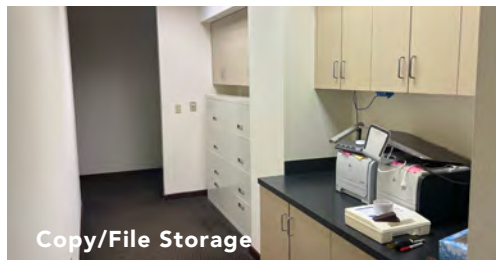
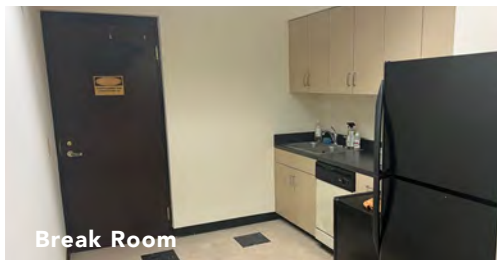
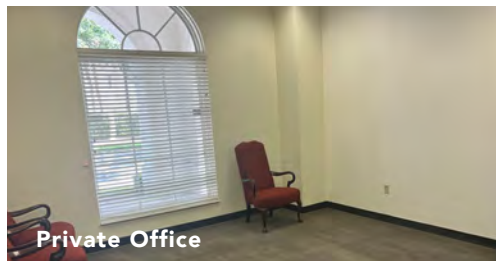
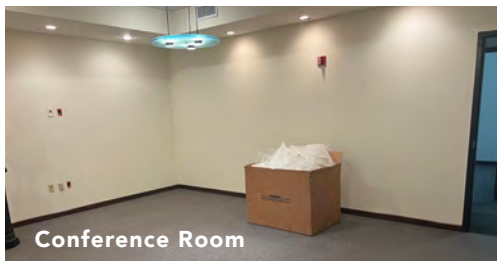
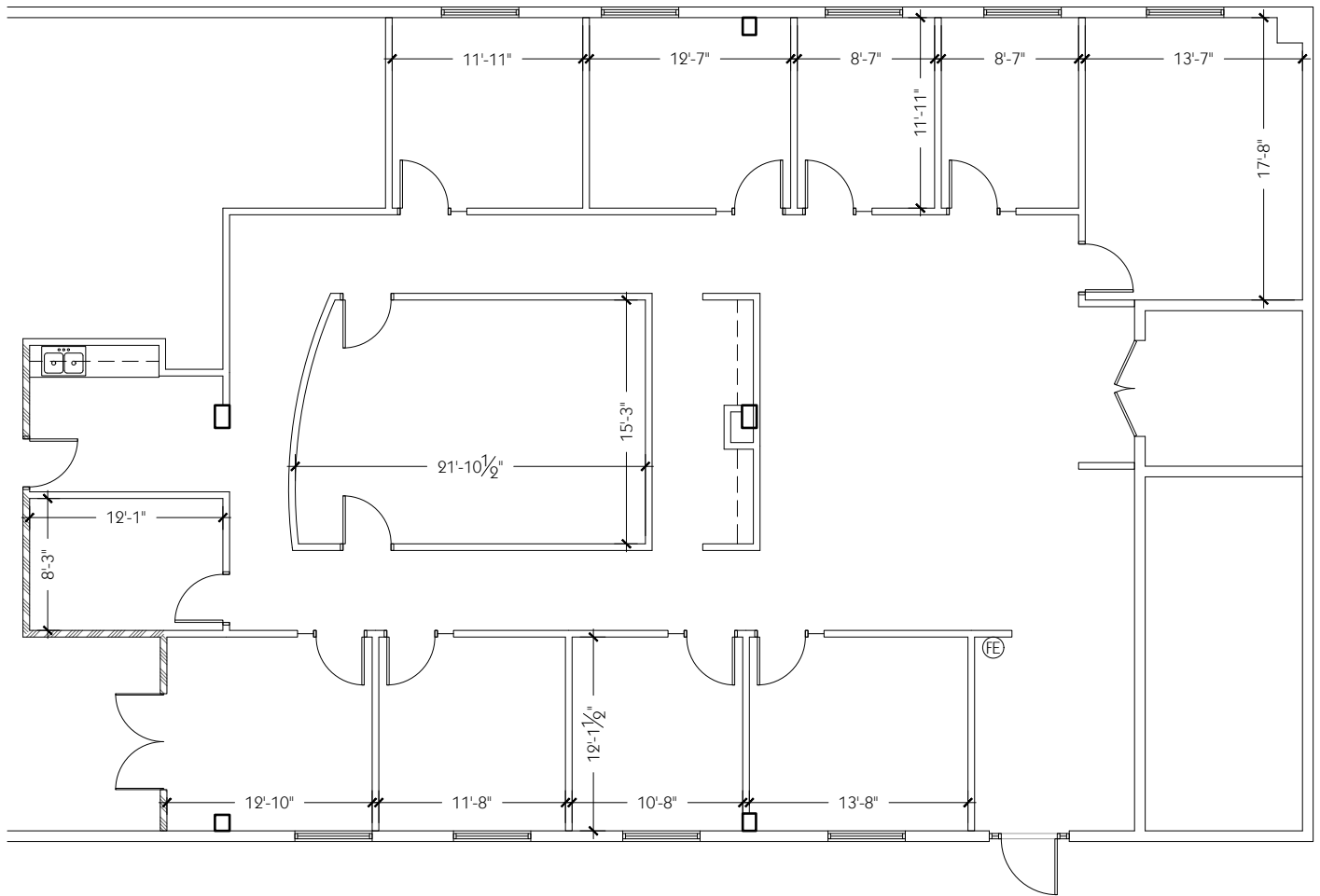
For More Information: HarbertRealty.com
400 S Park Ave, Suite 225, Winter Park, FL 32789

OFFICE BUILDING FOR LEASE

398 W Morse Blvd, Winter Park, FL 32789

FIRST FLOOR

SUITE 100 - 4,414± RSF



100



HARBERT
REALTY SERVICES

DAMIEN MADSEN

dmadsen@harbertrealty.com | 407.256.2844

JOSH SMITH, SIOR

jsmith@harbertrealty.com | 407.739.8602

For More Information: HarbertRealty.com

400 S Park Ave, Suite 225, Winter Park, FL 32789

OFFICE BUILDING FOR LEASE

398 W Morse Blvd, Winter Park, FL 32789

PHOTOS



HARBERT
REALTY SERVICES

DAMIEN MADSEN

dmadsen@harbertrealty.com | 407.256.2844

JOSH SMITH, SIOR

jsmith@harbertrealty.com | 407.739.8602

*For More Information: HarbertRealty.com
400 S Park Ave, Suite 225, Winter Park, FL 32789*