

BIZ PARK 29

3801, 3871, 3883, 3887
E UNIVERSITY GEORGETOWN, TX



BIZ PARK 29 | GEORGETOWN TEXAS
A Premier Office/Warehouse Facility Located Conveniently near
I30 & FM29 Less Than 2 Miles from IH35



- Grade High & Dock Level Doors
- HVAC Office Space
- 16-20' Ceiling Height
- 1500 – 8300 SF Available
- I Block from Confluence of I30 & FM 29
- Within Minutes of IH 35 & Downtown Georgetown

Tawney Stedman
512-960-6261
tawney@redcommercialre.com

The information contained herein was obtained from sources deemed reliable; however, no guarantees, warranties or representations as to the completeness or accuracy thereof. The presentation of this real estate information is subject to errors; omissions; change of price; prior sale or lease; or withdrawal without notice.

FOR LEASE

FOR LEASE

BIZ PARK 29

3801, 3871, 3883, 3887
E UNIVERSITY GEORGETOWN, TX



Bldg. 12, S. 1203 | 2,550 SF | \$12.50 psf nnn | Available Immediately

Bldg 8, S. 145 | 2345 SF HVAC | \$13.25 psf nnn | Available Immediately

Bldg 8, S. 165 | 1850 SF HVAC | \$13.00 psf nnn | Available Immediately

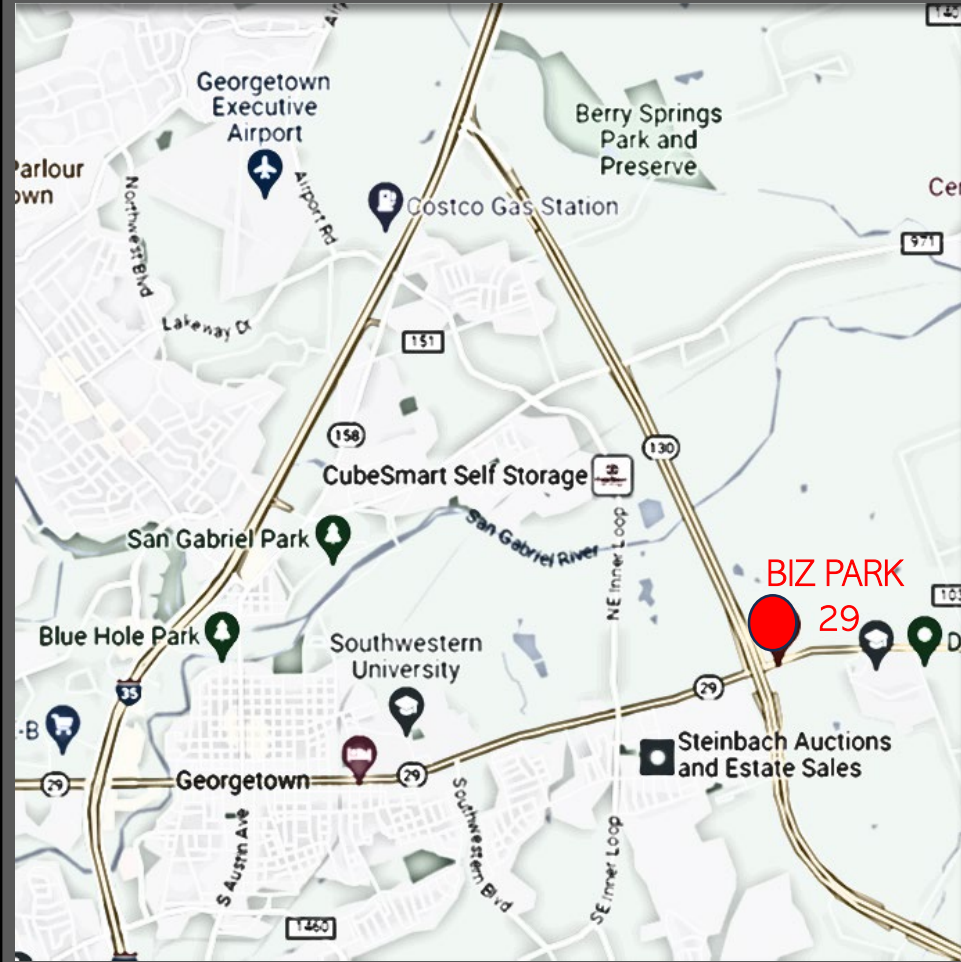
Bldg. 13 S 02 | 4000 SF HVAC | \$12.75 psf nnn | Available Immediately

\$12.50 - \$13.25 PSF NNN

Tawney Stedman
512-960-6261
tawney@redcommercialre.com

The information contained herein was obtained from sources deemed reliable; however, no guarantees, warranties or representations as to the completeness or accuracy thereof. The presentation of this real estate information is subject to errors; omissions; change of price; prior sale or lease; or withdrawal without notice.

FOR LEASE



BizPark 29 is located in the northeast quadrant of Hwy 130 and University (FM 29) just east of downtown Georgetown and Southwestern University.

3.25 Miles from IH 35

2.5 Miles from Downtown Georgetown

4.7 Miles from Georgetown Municipal Airport

7 Miles from Hutto

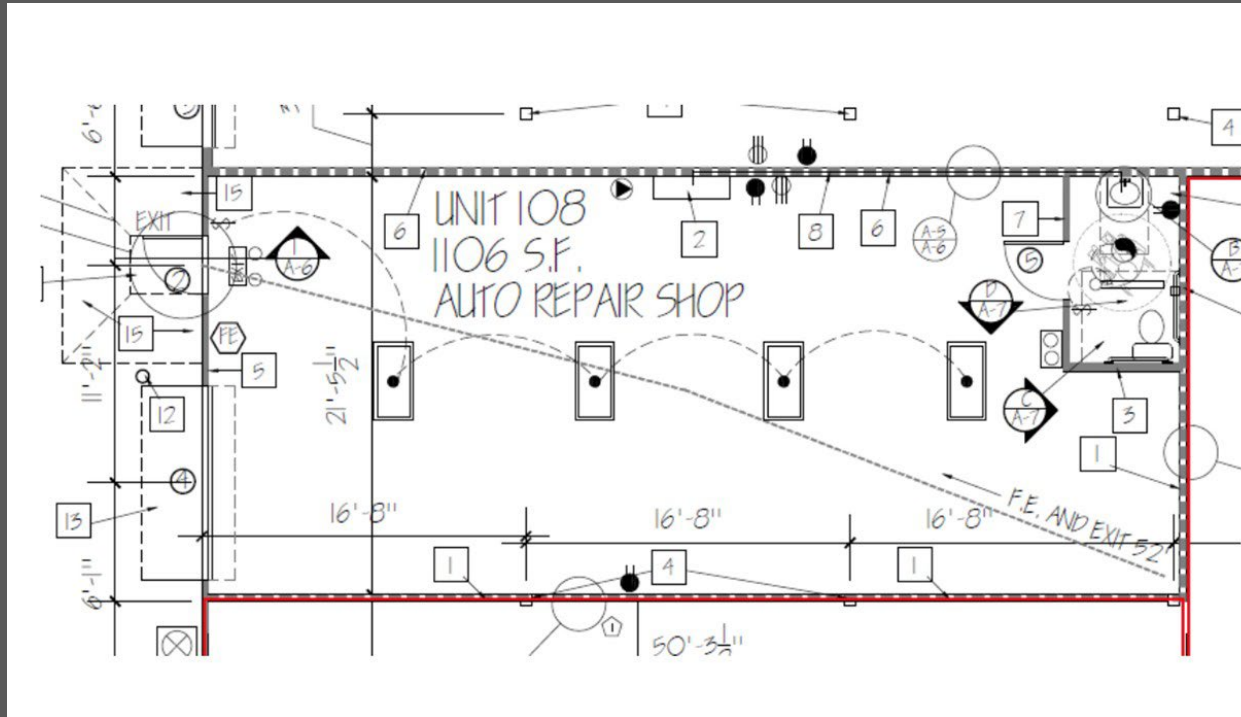
28 Miles from Downtown Austin

33 Miles from Austin Bergstrom Airport

Tawney Stedman
512-960-6261
tawney@redcommercialre.com

The information contained herein was obtained from sources deemed reliable; however, no guarantees, warranties or representations as to the completeness or accuracy thereof. The presentation of this real estate information is subject to errors; omissions; change of price; prior sale or lease; or withdrawal without notice.

FOR LEASE



BLDG 9
SUITE 108 | 1106 SF

- 100% HVAC
- Restroom
- 12x14 Overhead Door
- 100' Depth
- Avail Jan 1, 2025

\$12.50 psf nnn (\$3.30)

Tawney Stedman
512-960-6261
tawney@redcommercialre.com

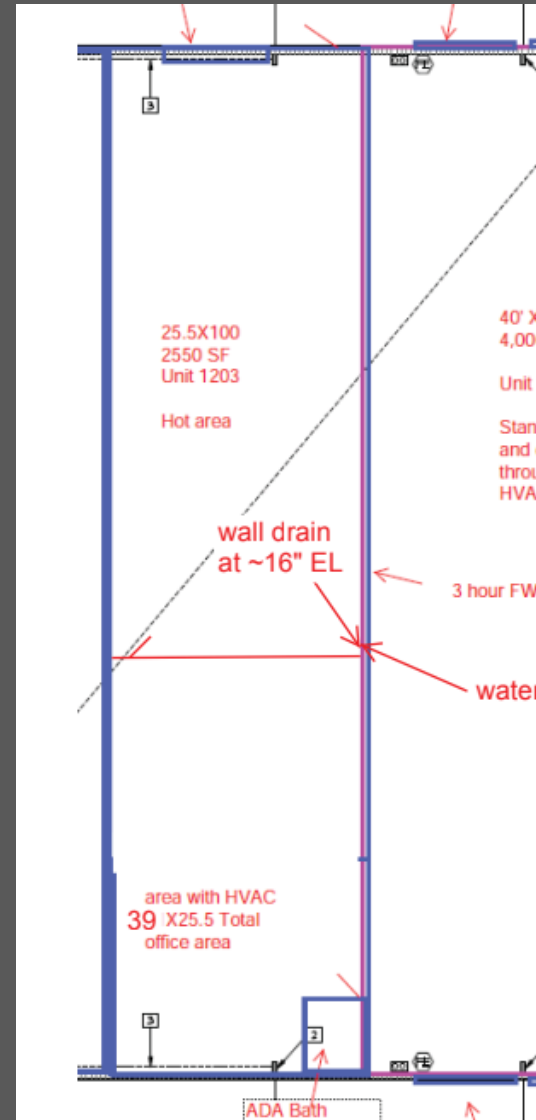
The information contained herein was obtained from sources deemed reliable; however, no guarantees, warranties or representations as to the completeness or accuracy thereof. The presentation of this real estate information is subject to errors; omissions; change of price; prior sale or lease; or withdrawal without notice.

FOR LEASE

BLDG 12
SUITE 1203 | 2550 SF

- 100% HVAC
- Restroom
- 12x14 Overhead Door
- 100' Depth
- Available immediately

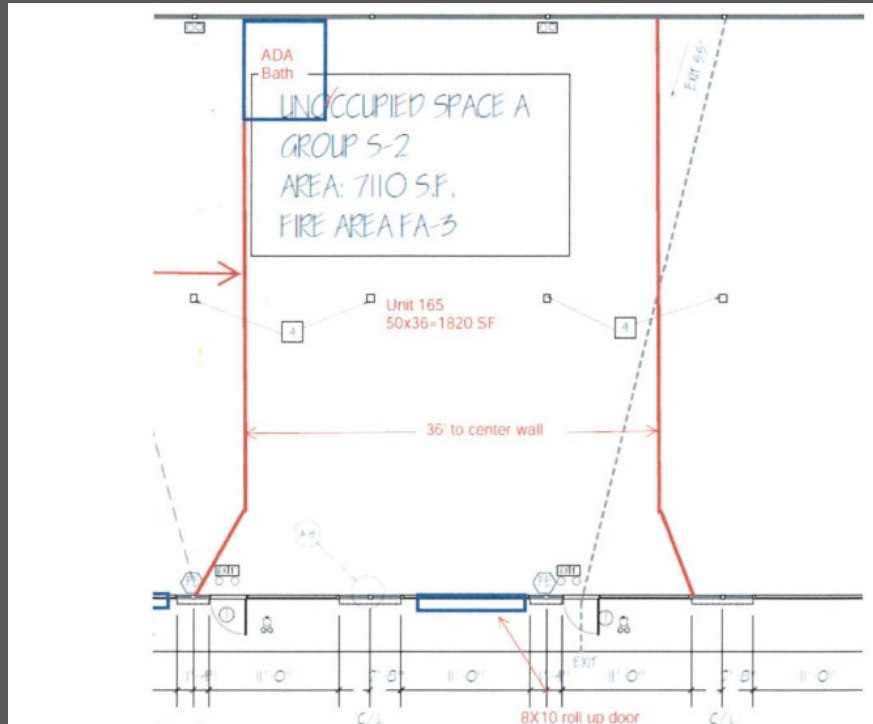
\$12.50 psf nnn (\$3.30)



Tawney Stedman
512-960-6261
tawney@redcommercialre.com

The information contained herein was obtained from sources deemed reliable; however, no guarantees, warranties or representations as to the completeness or accuracy thereof. The presentation of this real estate information is subject to errors; omissions; change of price; prior sale or lease; or withdrawal without notice.

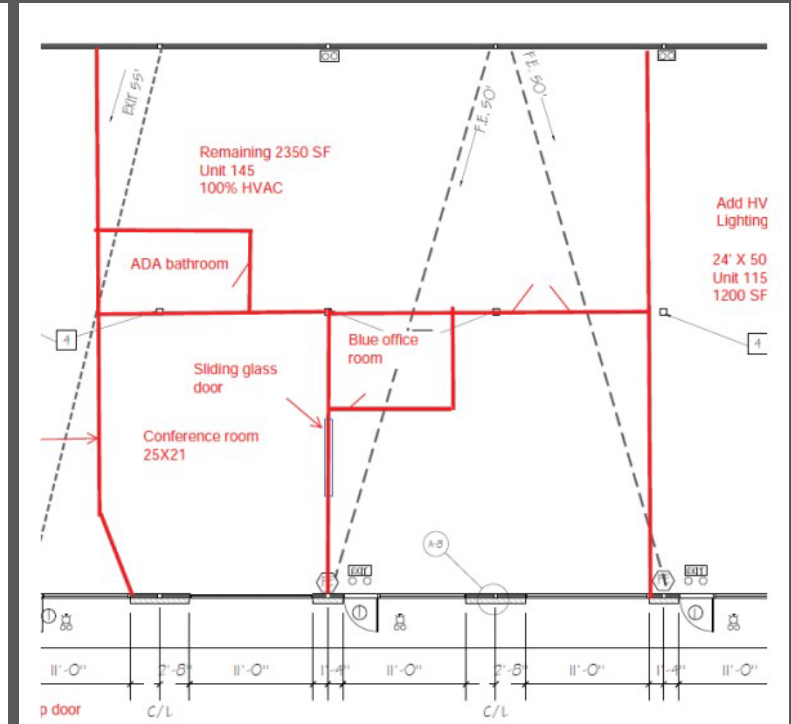
FOR LEASE



BLDG 8
SUITE 165 1820 SF

- 100% HVAC
- Restroom
- Glass Front

\$13.00 psf nnn (\$3.30)



BLDG 8
SUITE 145 | 2345 SF

- 100% HVAC
- Office
- Conference Room
- Restroom
- Glass Front

\$13.25 psf nnn (\$3.30)

Tawney Stedman
512-960-6261
tawney@redcommercialre.com

The information contained herein was obtained from sources deemed reliable; however, no guarantees, warranties or representations as to the completeness or accuracy thereof. The presentation of this real estate information is subject to errors; omissions; change of price; prior sale or lease; or withdrawal without notice.