

1001 PRINCE GEORGES BLVD
UPPER MARLBORO, MD 20774

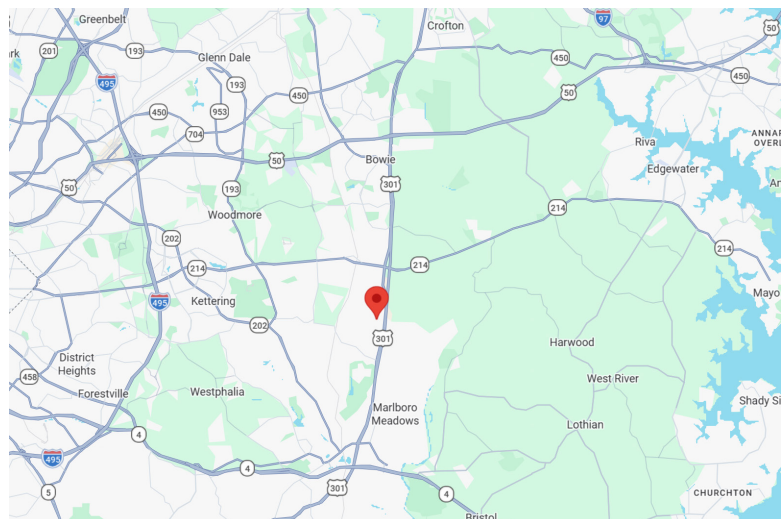


Industrial Warehouse/ Flex Condos

- Six Condo units totaling \pm 17,012 sqft (Divisible)
 - Unit 100 & 150: \pm 5,049 (Office space)
 - Unit 250 - 400: \pm 11,963 (Office and Warehouse) (Divisible)
- Zoned IH - Ample parking
- Off of RT-301 with easy access to I-495 and I-95
- **Contact agent for pricing**

MATTHEW ANTONIS
Commercial Salesperson
410-449-1072
mantonis@friendre.com

TED KROOS
Commercial Salesperson
410-449-1074
tkroos@friendre.com



Main: 410-449-1144 · Fax: 410-983-3956 · friendre.com
8436 Veterans Hwy, Millersville, MD 21108

All information is from sources deemed reliable; However, we are not responsible for errors, omissions, misinterpretation, or misuse of information presented; We make no warranty of any kind, express or implied, with respect to the property or any other matters; Information and the property is subject to change, corrections, prior sales, or withdrawal.

1001 PRINCE GEORGES BLVD
UPPER MARLBORO, MD 20774



3D Tour



Unit 100 & 150

- Features 15 private offices, a large conference room, 2 bathrooms, a kitchenette, and a reception area
- Ideal for a variety of commercial, institutional, & office uses
- Potential for warehouse conversion
- 2 existing drive-in bays
- **Contact agent for pricing**



MATTHEW ANTONIS
Commercial Salesperson
410-449-1072
Mantonis@friendre.com



TED KROOS
Commercial Salesperson
410-449-1074
tkroos@friendre.com

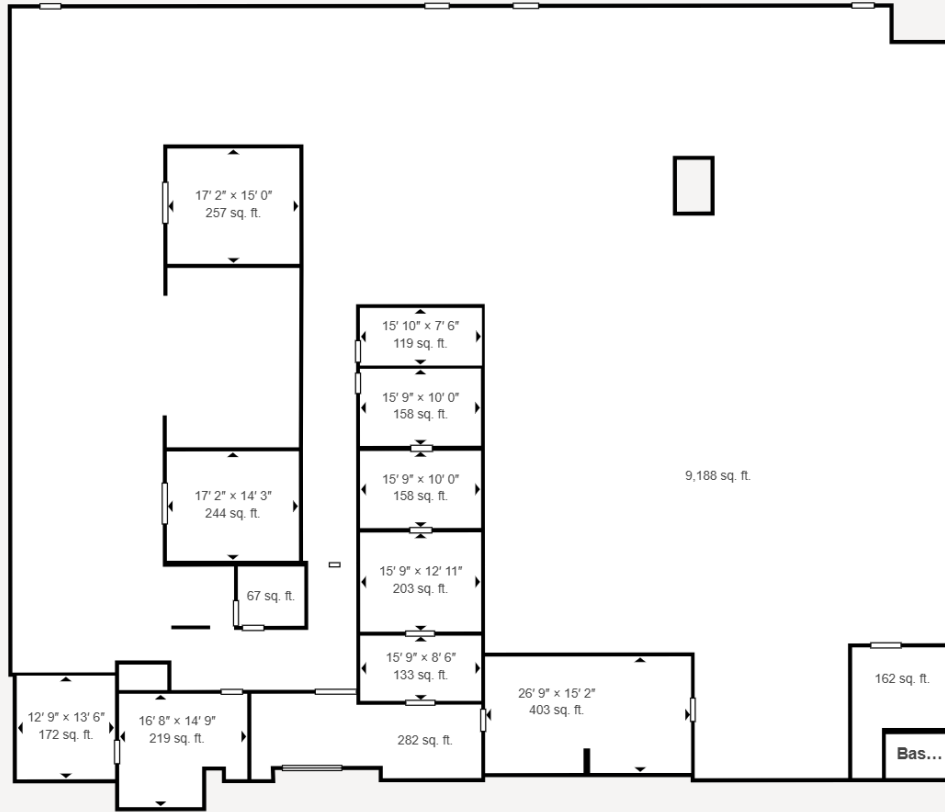
Main: 410-449-1144 · Fax: 410-983-3956 · friendre.com
8436 Veterans Hwy, Millersville, MD 21108

All information is from sources deemed reliable; However, we are not responsible for errors, omissions, misinterpretation, or misuse of information presented; We make no warranty of any kind, express or implied, with respect to the property or any other matters; Information and the property is subject to change, corrections, prior sales, or withdrawal.

1001 PRINCE GEORGES BLVD
UPPER MARLBORO, MD 20774



3D Tour



Unit 250-400

Contiguous warehouse space

- ± 12,373 sqft of warehouse - 100' deep
- Features a front office and a showroom
- 4 Automatic drive-in doors - 14'
- 3 Phase - 225 A
- 20' clear ceiling height
- **Contact agent for pricing**



MATTHEW ANTONIS
Commercial Salesperson
410-449-1072
Mantonis@friendre.com



TED KROOS
Commercial Salesperson
410-449-1074
tkroos@friendre.com

Main: 410-449-1144 · Fax: 410-983-3956 · friendre.com
8436 Veterans Hwy, Millersville, MD 21108

All information is from sources deemed reliable; However, we are not responsible for errors, omissions, misinterpretation, or misuse of information presented; We make no warranty of any kind, express or implied, with respect to the property or any other matters; Information and the property is subject to change, corrections, prior sales, or withdrawal.



MATTHEW ANTONIS
 Commercial Salesperson
410-449-1072
 Mantonis@friendre.com



TED KROOS
 Commercial Salesperson
410-449-1074
 tkroos@friendre.com

Main: 410-449-1144 · Fax: 410-983-3956 · friendre.com
 8436 Veterans Hwy, Millersville, MD 21108

All information is from sources deemed reliable; However, we are not responsible for errors, omissions, misinterpretation, or misuse of information presented; We make no warranty of any kind, express or implied, with respect to the property or any other matters; Information and the property is subject to change, corrections, prior sales, or withdrawal.