

FOR LEASE

RETAIL/OFFICE SPACE

#5, 1109 Summerside Dr SW
Edmonton, AB



Ian Fletcher

(780) 913-4663

IanFletcher@MaxWellCommercial.ca

Robert Halpern

(780) 975-3898

RobertHalpern@MaxWellCommercial.ca

MaxWell Commercial

4107 99 Street

Edmonton, AB T6E 3N4

(780) 450-6300

www.MaxWellCommercial.ca



Commercial

MaxWell Polaris

FOR LEASE

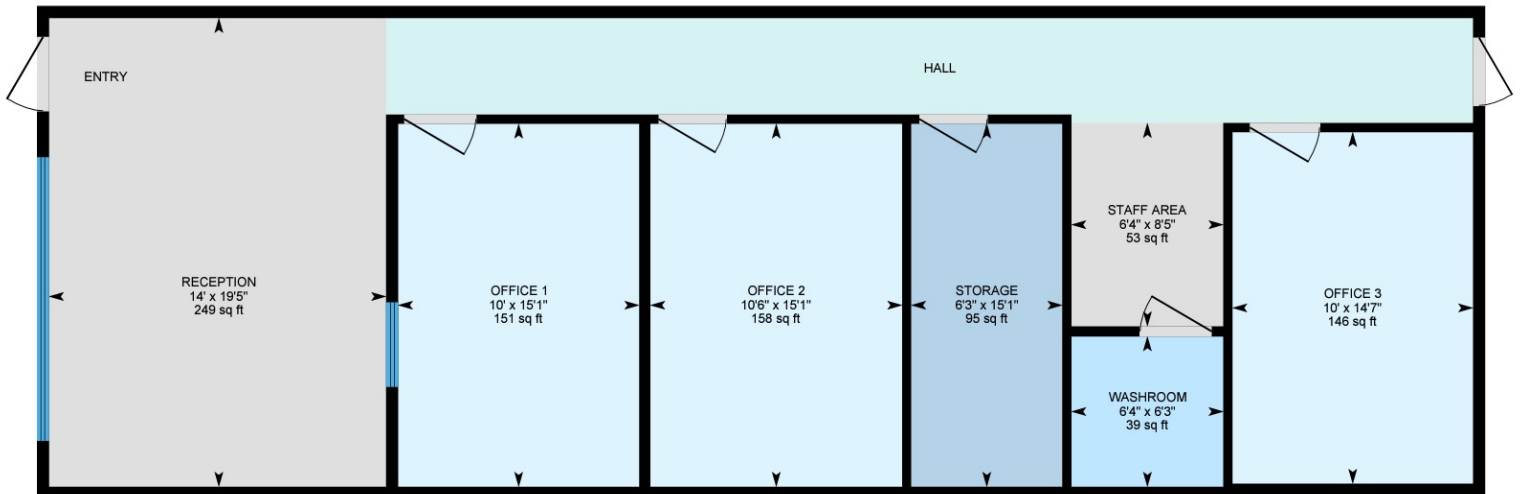
RETAIL/OFFICE SPACE

#5, 1109 Summerside Dr SW
Edmonton, AB
T6X 0H6

ZONING	CNC
YEAR BUILT	2012
TOTAL SF	1,229 SF
HEATING	HVAC
UTILITIES	Separately Metered
PARKING	Scramble
LEASE RATE	\$34 PSF
OP COSTS (2020)	\$17.40 PSF
AVAILABLE	December 1, 2023



- Services Summerside & Ellerslie Communities
- Shadow anchored by Circle-K
- Join Pizza 73, Dentist, Medical Specialist, Daycare, Pharmacy and a Restaurant

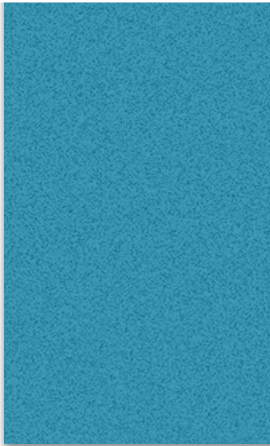
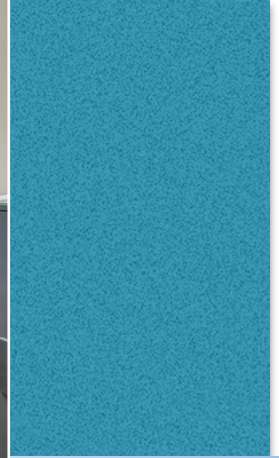


Ian Fletcher
(780) 913-4663
IanFletcher@MaxWellCommercial.ca

Robert Halpern
(780) 975-3898
RobertHalpern@MaxWellCommercial.ca

FOR LEASE
RETAIL/OFFICE SPACE

#5, 1109 Summerside Dr SW
Edmonton, AB
T6X 0H6



Ian Fletcher
(780) 913-4663
IanFletcher@MaxWellCommercial.ca

Robert Halpern
(780) 975-3898
RobertHalpern@MaxWellCommercial.ca