

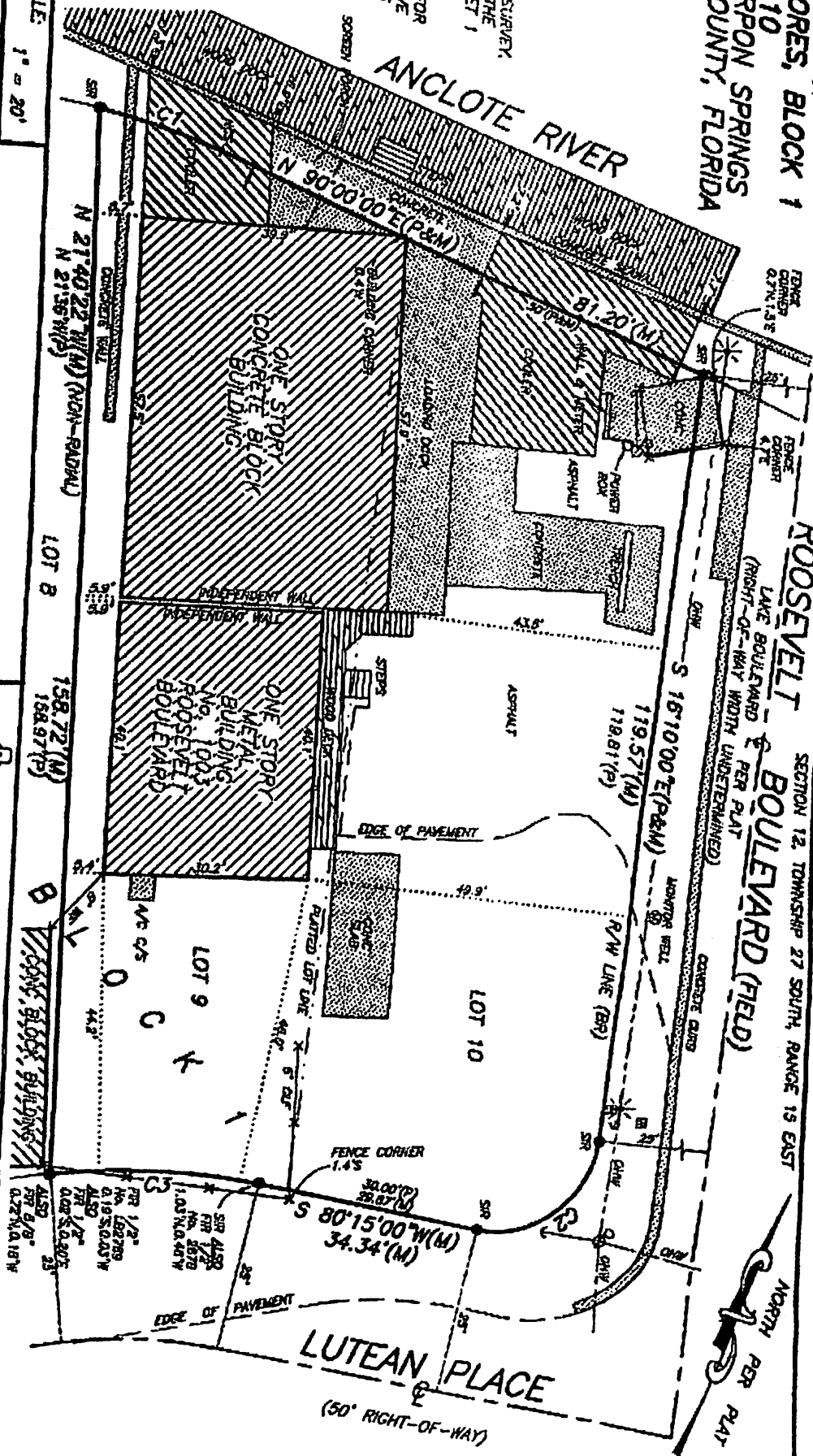
**BOUNDARY SURVEY  
LUTEAN SHORES, BLOCK 1  
LOTS 9 & 10  
CITY OF TARPON SPRINGS  
PINELLAS COUNTY, FLORIDA**

**ROOSEVELT BOULEVARD (FIELD)**  
SECTION 12, TOWNSHIP 27 SOUTH, RANGE 15 EAST

**NOTES:**

-THIS IS A 2 SHEET SURVEY,  
NOT VALID WITHOUT THE  
ATTACHMENT OF SHEET 1  
OF 2.

-SEE SHEET 1 OF 2 FOR  
NOTES, LEGEND, CURVE  
TABLE, CERTIFICATIONS  
AND DESCRIPTION.



REVISION	DATE	SCALE:
NUMBER 19	2008	1" = 20'
COMPOUND 06	SURVEYED BY:	RJK
290 PAGE 24	DRAWN BY:	RAC
574 3		

**SHEET 2 OF 2**  
12/19/08  
DATE SIGNED

**MICHAEL BAKER ASSOCIATES**  
LAND SURVEYORS and PLANNERS  
220 SOUTH SAFFORD AVENUE  
TARPON SPRINGS, FLORIDA 34689  
(727) 938-5026 - FAX (727) 938-2368  
AUTHORIZATION NO. LB 4019