

WASHINGTON DRIVE EXECUTIVE CENTER



| 3459 Washington Drive, Eagan MN 55122 |

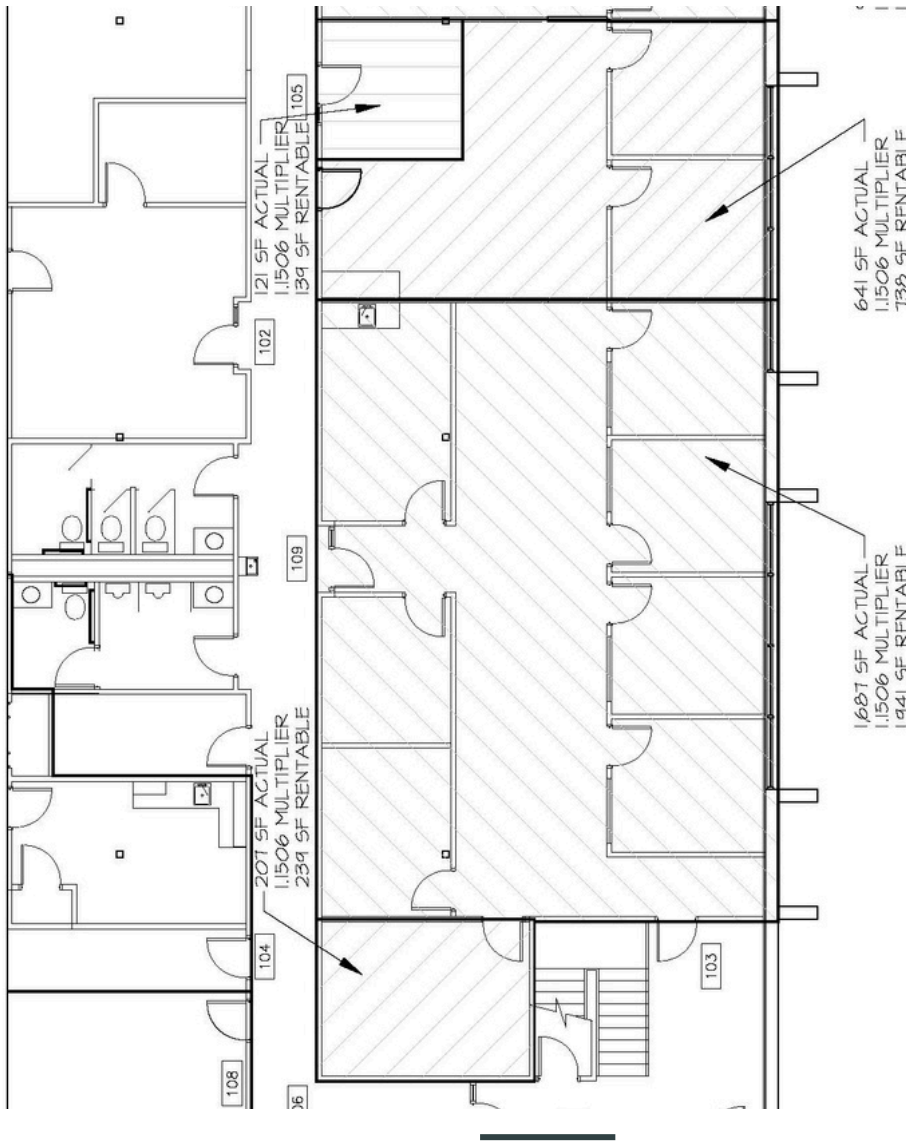
Outstanding Leasing Value

PRICING
\$9.75 psf Office

Property Features

- Available SF: 738 sf - 2,894 sf
- Great access to Hwy 35E & I-494
- Monument Signage Available
- Professional, Corporate Image
- Close to MSP Airport
- Abundant Parking (4/1,000)
- \$10.88 psf CAM and Tax (2026)
- Many area Restaurants and amenities





Property Features

- The suite is divisible into 738 SF, 1941 SF, 2,180 SF and 2,894 SF options, Landlord is willing to demise at their expense
- Quiet, professional building with local hands on ownership
- Landlord willing to demo or build out for a term lease
- Total building square footage: 24,194 SF

www.cornerstone-mn.com

Jack Battenhoff | (612) - 723 - 5408
 jack@cornerstone-mn.com

Luke Battenhoff | (612) - 723 - 2537
 luke@cornerstone-mn.com