



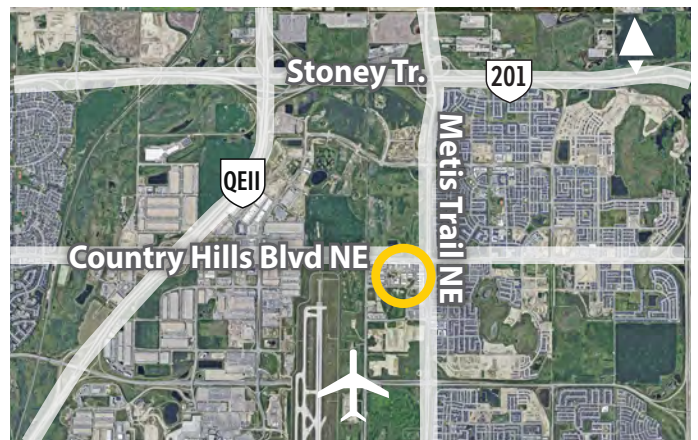
**1,220.6 sf**  
Unit 5

**2,023.3 sf**  
Drive-thru **C/L**

## RETAIL SPACE IN JACKSONPORT FOR LEASE

11281 38 Street NE,  
Calgary

- » Build-to-suit or Improvement Allowance
- » 2,023 sq. ft. drive-thru opportunity



FOR MORE  
INFORMATION OR  
TO VIEW, PLEASE  
CONTACT:

**Joshua Gill**, SENIOR ASSOCIATE

C: **587-500-7707**

O: **403-290-0178**

[jgill@barclaystreet.com](mailto:jgill@barclaystreet.com)



LOCAL  
EXPERTISE  
MATTERS



## AREA DEMOGRAPHICS (2 km radius)

Population **22,539**      Median Age **32.1**  
 Average Household Income **\$106,578**

### Current Consumption / Household

<b>\$14,825</b> FOOD	<b>\$4,850</b> HEALTH CARE
<b>\$4,419</b> RECREATION	<b>\$2,174</b> PERSONAL CARE
<b>\$3,036</b> LIQUOR/TOBACCO	<b>\$3,745</b> CLOTHING

Source: Statistics Canada

- » Brand new commercial development.
- » Quick access to Country Hills Blvd. NE.
- » Excellent accessibility to Deerfoot Trail and Stoney Trail.
- » Abundance of parking.

## LEASE INFORMATION

ADDRESS: 11281 38 Street NE, Calgary

ZONING: I-C (Industrial—Commercial)

AVAILABLE FOR LEASE:

1,220.6 sq. ft. – Unit 5

2,023.3 sq. ft. – Drive-thru **C/L**

- ~~1,113.3 sq. ft. – Unit 1 – LEASED~~
- ~~1,220.6 sq. ft. – Unit 2 – LEASED~~
- ~~1,220.6 sq. ft. – Unit 3 – LEASED~~
- ~~1,220.6 sq. ft. – Unit 4 – LEASED~~
- ~~1,220.6 sq. ft. – Unit 6 – LEASED~~

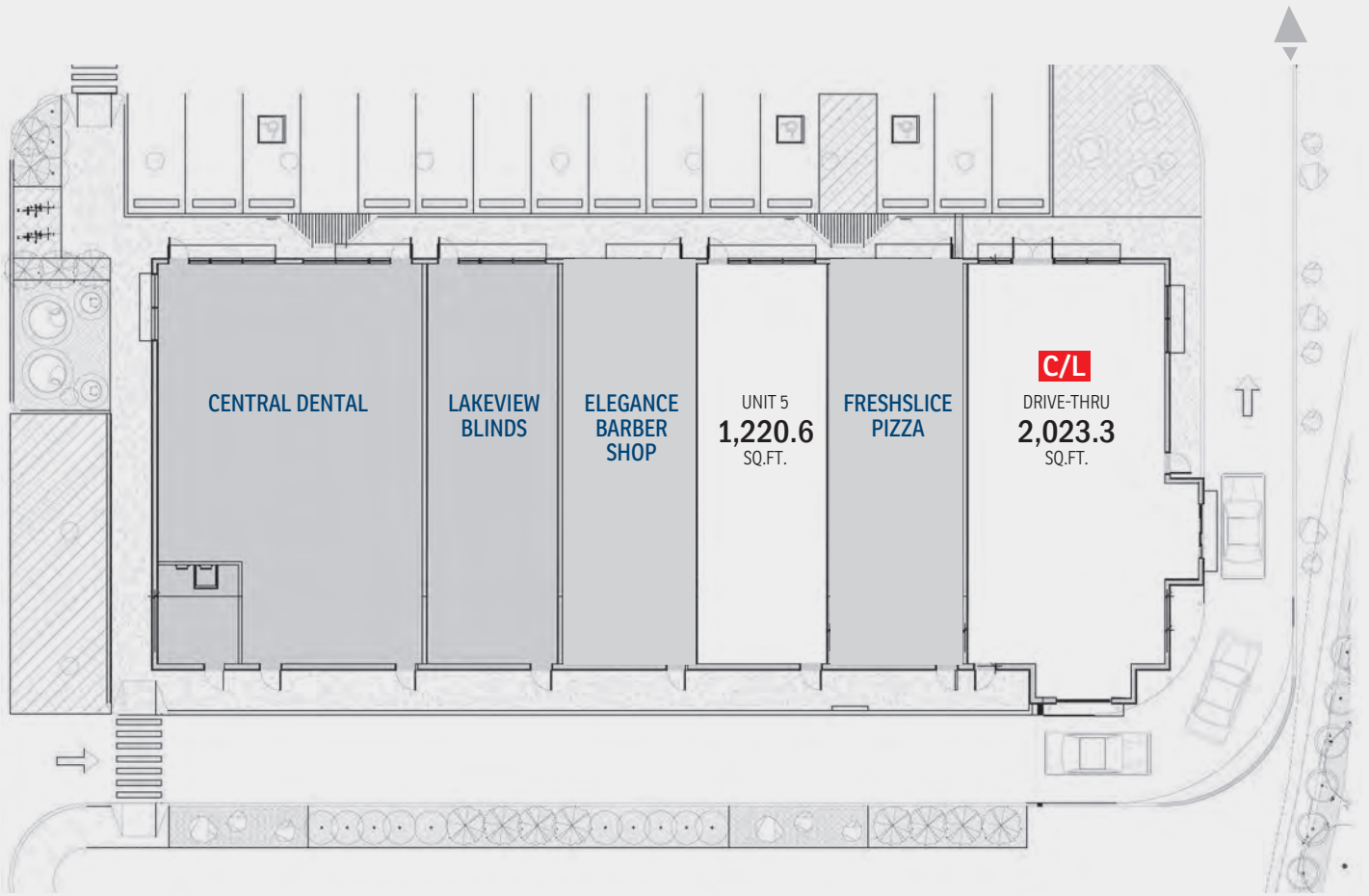
AVAILABILITY: Immediate

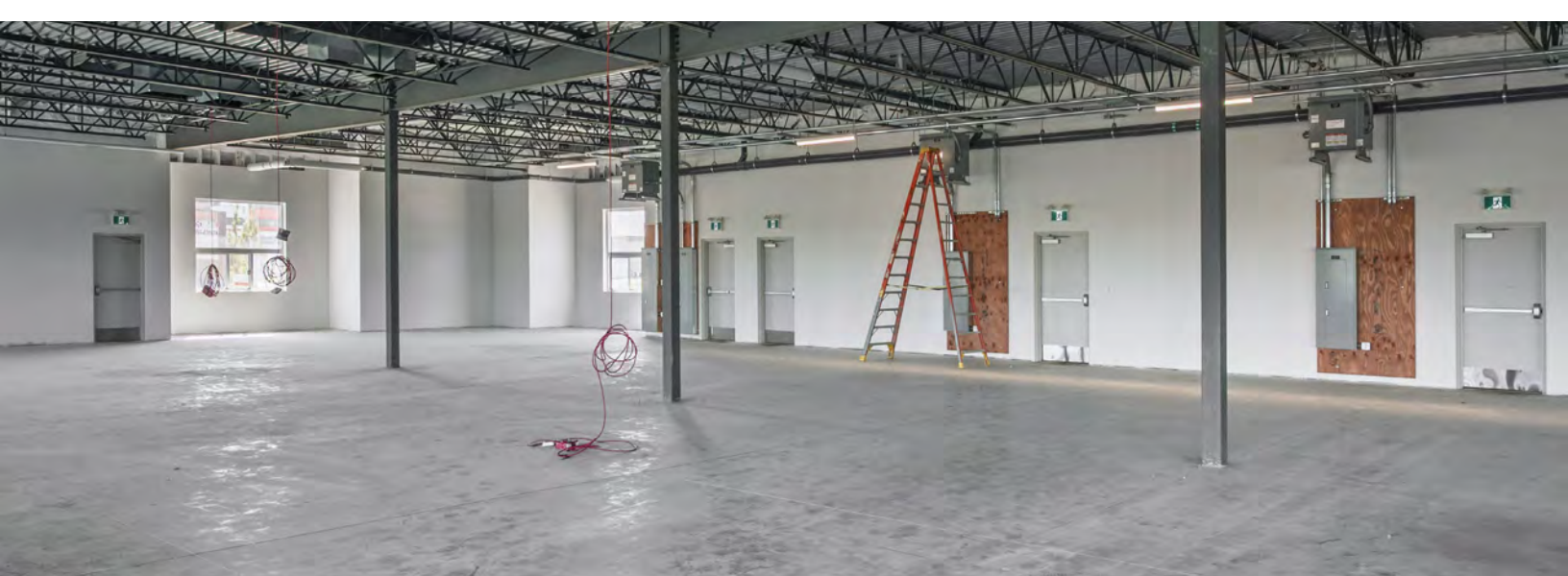
OP. COSTS AND TAXES: \$17.00 per sq. ft. (est.)

NET RENT: Market



Pylon signage on 38 Street NE





The information contained herein has been gathered from sources deemed reliable, but is not warranted as such and does not form any part of any future contract. This offering may be altered or withdrawn at any time without notice.

Copyright © 2026 Barclay Street Real Estate Ltd. All rights reserved.

