



OFFICE CONDO
1,951 SF

www.LakeshoreCommercial.com
44 East 8th Street, Suite 510 | Holland, MI 49423 | 616.394.4500

CALEB DRISENGA
• MOB +1 616 283 8205
• DIR +1 616 355 3149
• CALEB@LAKESHORECOMMERCIAL.COM

LISTING INFORMATION

Available SF	1,951 SF
Lease Price	\$11.68/SF
Lease Type	Modified Gross
Terms	12-24 Months
Price per Month	\$1,900/Month
Taxing Authority	Heath Township
County	Allegan
Zoning	R-2

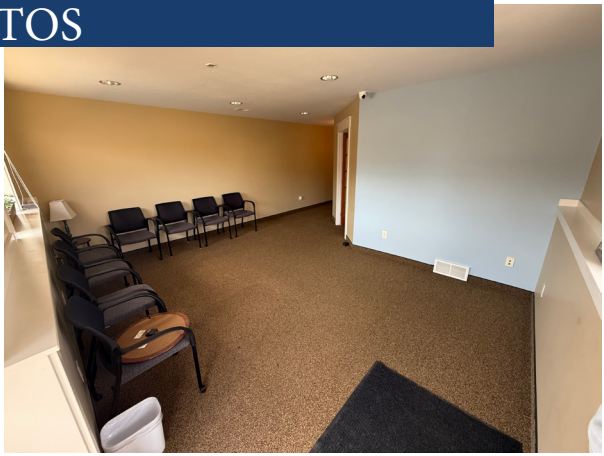
BUILDING HIGHLIGHTS

- Reception Area
- Conference Room
- Break Room with Kitchenette
- Open Workspace with Cubicles
- Three Private Offices
- Ample On-site Parking
- Possibility of Outdoor Storage
- Centrally located between Holland, Allegan, and Saugatuck

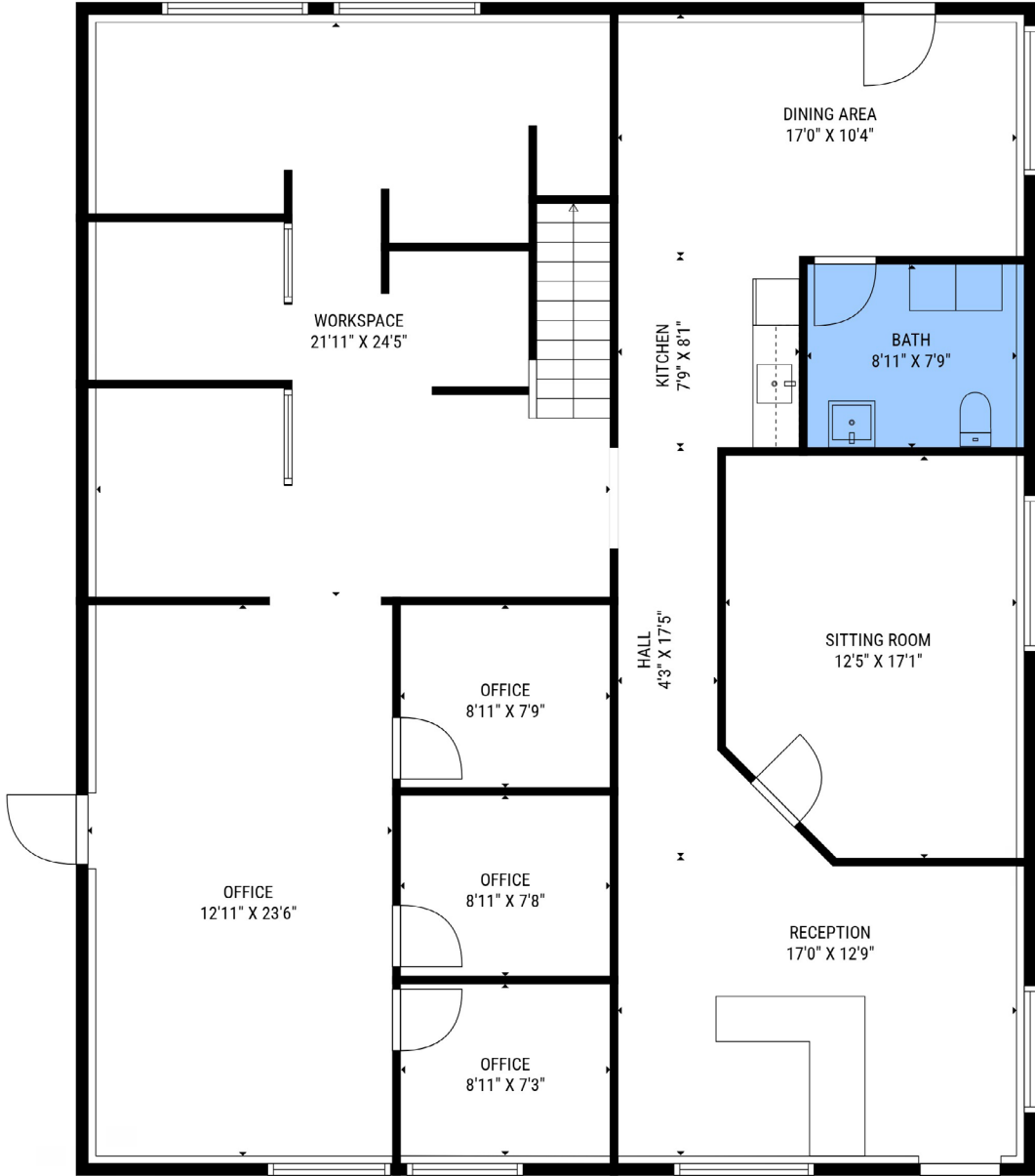


Professional office condo for lease in Hamilton, MI with 1,951 SF ready for a new occupant. Located just off 136th and M40 this space is centrally located between Holland, Allegan, and Saugatuck. The current layout sets up well for a multitude of uses with a reception area, conference room, break room with kitchenette, open workspace with cubicles, and three private offices. Ample onsite parking available with the possibility of outdoor storage. Please call the listing agent with all inquiries. Listing agent to be present for showings.

PHOTOS



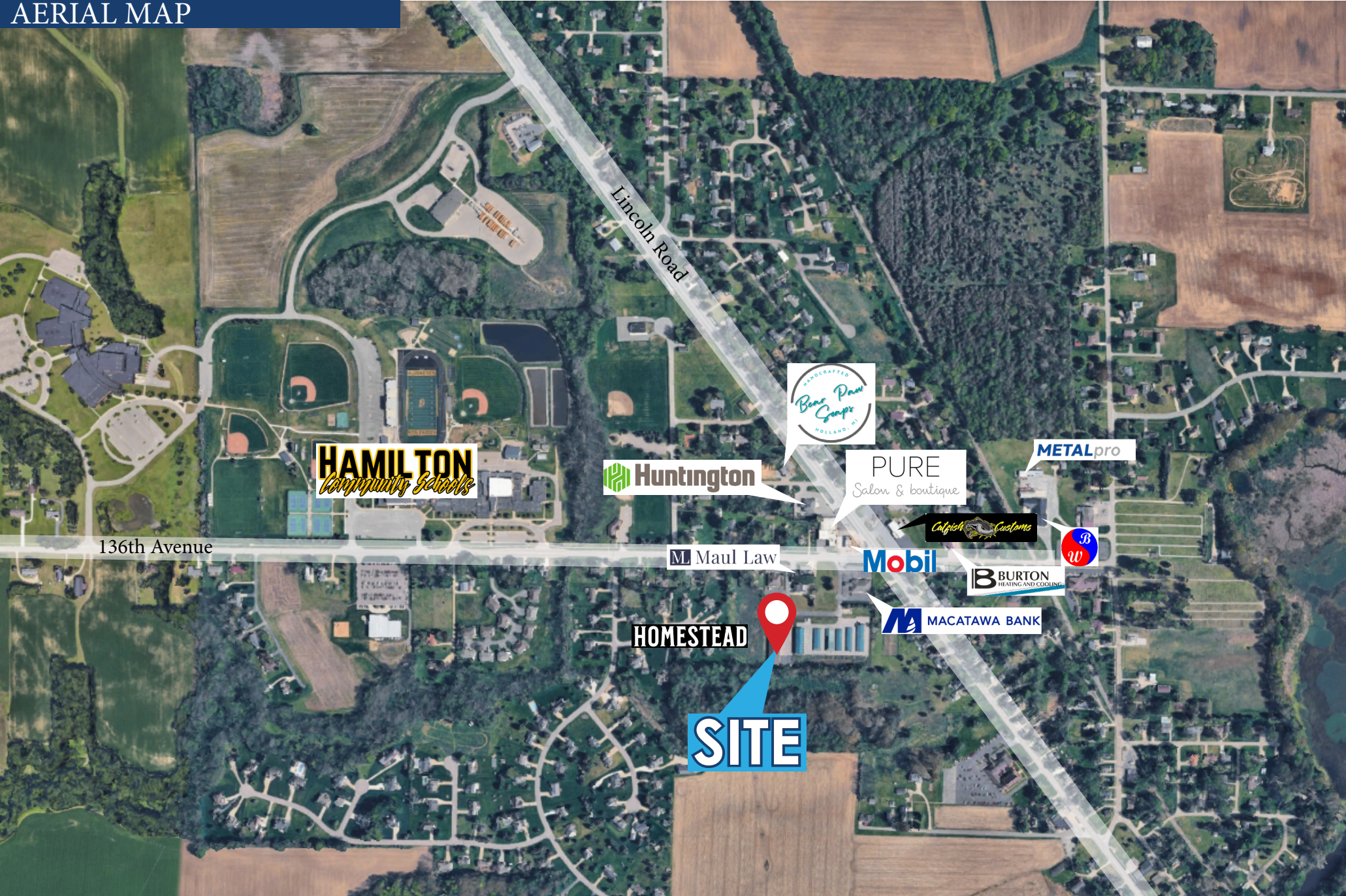
LAYOUT



TOTAL: 2327 sq. ft
FLOOR 1: 1951 sq. ft, FLOOR 2: 376 sq. ft
EXCLUDED AREAS: STORAGE: 630 sq. ft, ELECTRICAL ROOM: 127 sq. ft, OPEN TO BELOW: 492 sq. ft



AERIAL MAP



YOUR PREMIER BROKER IN WEST MICHIGAN



CALEB DRISENGA
ADVISOR

DIRECT (+1) 616-355-3149
CELL (+1) 616-283-8205
CALEB@LAKESHORECOMMERCIAL.COM



DREW DURHAM
PRINCIPAL

DIRECT (+1) 616-355-3148
CELL (+1) 616-566-2039
DREW@LAKESHORECOMMERCIAL.COM



JASON DEWITT
PRINCIPAL

DIRECT (+1) 616-355-3156
CELL (+1) 616-836-2856
JASON@LAKESHORECOMMERCIAL.COM



JIM EDEWAARD, CCIM
ADVISOR

DIRECT (+1) 616-355-3144
CELL (+1) 616-403-6131
JIM@LAKESHORECOMMERCIAL.COM



KRIS DEPREE
PRINCIPAL

DIRECT (+1) 616-355-3141
CELL (+1) 616-212-5576
KRIS@LAKESHORECOMMERCIAL.COM



MIKE NAGELKIRK
ADVISOR

DIRECT (+1) 616-355-3151
CELL (+1) 616-836-1122
MIKE@LAKESHORECOMMERCIAL.COM



TOM POSTMA
PRINCIPAL

DIRECT (+1) 616-355-3145
CELL (+1) 616-283-2411
TOM@LAKESHORECOMMERCIAL.COM

Lakeshore Commercial Real Estate has over 100 years of experience in the industry. We have seen many changes and evolutions over the years, but our focus has always remained the same: to serve businesses in our community and help them achieve their success. We specialize in all aspects of commercial real estate, including sales, management, and leasing. We have a deep understanding of the local market and the unique needs of different businesses. We use our expertise to help our clients find the right property, negotiate the best deals, and manage their properties efficiently and effectively. We don't just have you covered on the Lakeshore. We have created excellent relationships with brokers outside of the Lakeshore area to ensure we are serving you best. We are committed to our clients and their success. We work closely with each client to understand their needs and goals, and we develop customized solutions to help them achieve those goals.