



CLARKSON MEDICAL & DENTAL CENTERS

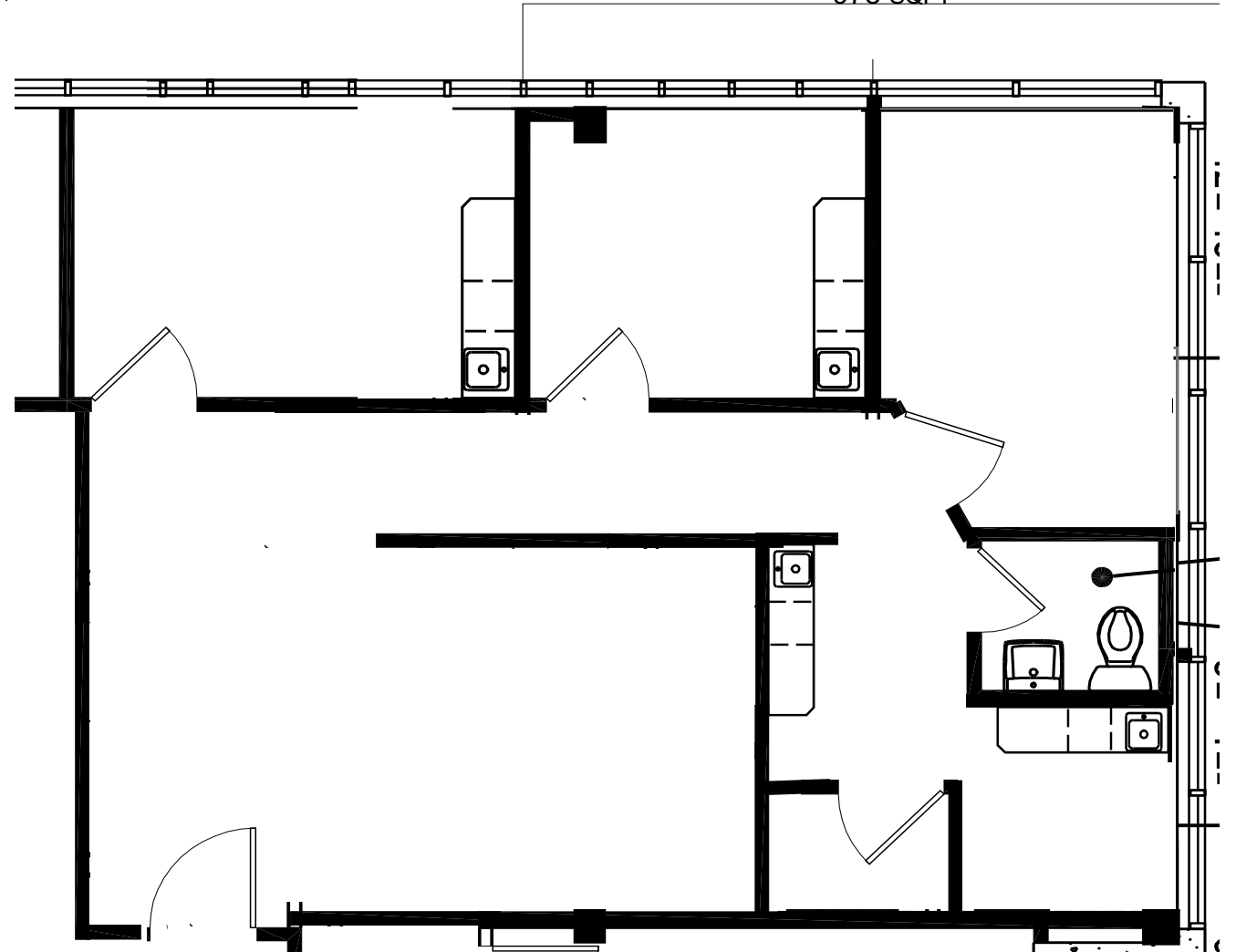
3601 & 3701 S. CLARKSON STREET, ENGLEWOOD, CO 80113

SUITE 535

978 SQFT

SUITE 535

- 5TH FLOOR OF THE 3601 BUILDING
- FULL BUILD OUT, RECONFIGURATIONS AVAILABLE
- 4 EXAM ROOMS WAITING AREA/RECEPTION AND OFFICE
- 6: 1,000 PARKING RATIO
- RESERVED PARKING SPOTS AVAILABLE
- FEATURES LOTS OF NATURAL LIGHT AND BEAUTIFUL WESTERN VIEW
- ONSITE PROPERTY MANAGEMENT
- NEW BUILDING OWNERSHIP AND MANAGEMENT



FOR MORE INFORMATION PLEASE CALL

303-781-9930