



600 Newbold Street #11 London, Ontario



1,851 sf of clean industrial space



One drive in door



Moments away from Highway 401

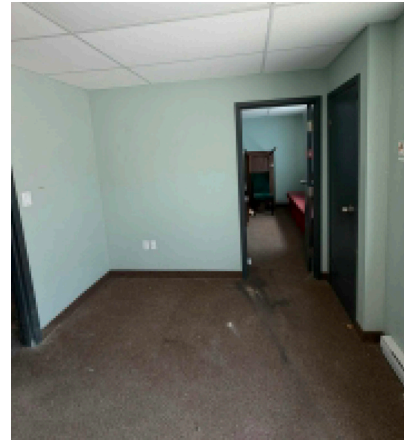
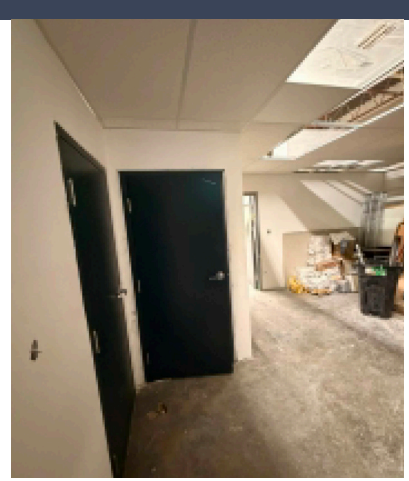


Charlie Gobert
Sales Representative, Principal
+1 226 289 2836
charlie.gobert@avisonyoung.com

Nolan Adkin
Broker, Principal
+1 226 289 2799
nolan.adkin@avisonyoung.com



Platinum member



Property details

600 Newbold Street #11
London, ON

- Light industrial space available on the south end of London
- 1,851 sf unit mostly warehouse space
- The unit has one drive in door
- Location provides easy access to Highway 401 allowing for connectivity to surrounding cities and regions

\$10.00 psf

Asking net rate

\$3.88 psf

Additional rent



1,851 sf
Unit size



LI1(Light Industrial)
Zoning



14 feet
Clear height



200A / 120V
Power



1 DI door
Shipping doors



Available onsite
Parking

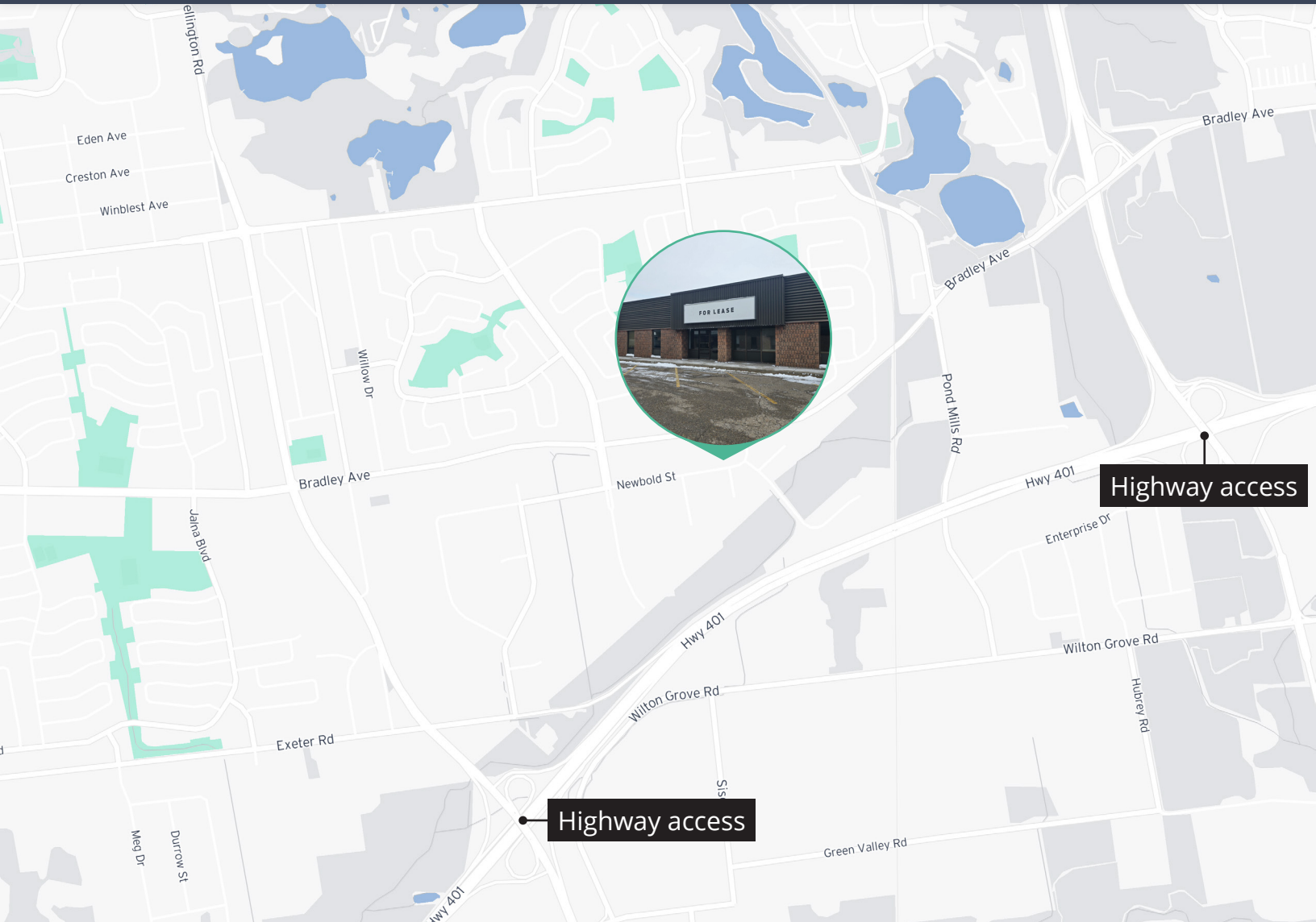


On bus route
Public transit



Signband & directory
Signage

Industrial for lease | 600 Newbold Street, London



	Population	Median age	Median income
5 minute drive	14,560	37.7	\$89,544
10 minute drive	98,874	38	\$80,566
15 minute drive	237,486	37.8	\$76,482

Get more information

Charlie Gobert

Sales Representative, Principal
+1 226 289 2836
charlie.gobert@avisonyoung.com

Nolan Adkin

Broker, Principal
+1 226 289 2799
nolan.adkin@avisonyoung.com

Avison Young Commercial Real Estate Services, LP, Brokerage
495 Richmond Street, Unit 104, London, ON N6A 5A9
T +1 226 366 9090 F +1 866 541 9755

**AVISON
YOUNG**

**CANADA BEST
MANAGED
COMPANIES**
Platinum member