



81 A STREET

SOUTH BOSTON, MA 02127

NEW CONSTRUCTION - AVAILABLE NOW



COMMERCIAL SPACE FOR SALE 3,600+ SF

Secure your place in South Boston's most iconic new building!

- Ideal space for retail, salon/spa, fitness, medspa, café, of shopping
- Mezzanine level
- 25'+ ceiling height
- 3 minute walk to Broadway T-station on the Red Line, and major bus lines
- 5 minute drive to either South Station or to Logan Airport
- Thriving demographics
- Back of house entrance on W 3rd St for easy loading



FACILITY

FEATURES

Featuring a mezzanine level and 25'+ ceiling height, this 3,600 SF space is designed to support any business. Offering excellent visibility in a high-traffic area, making it perfect for any retail space or specialty shop. With easy access to public transit and walking distance of nearby neighborhoods, this prime location is ideal for launching or expanding your business.

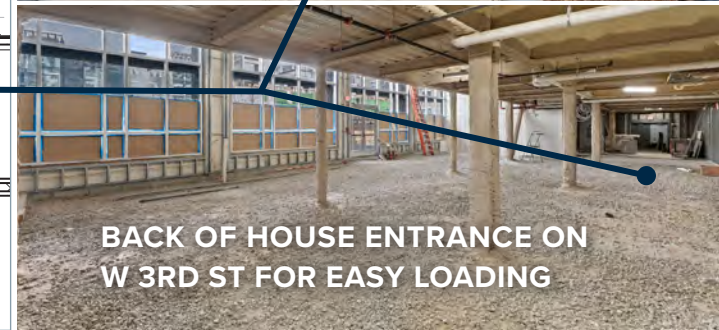
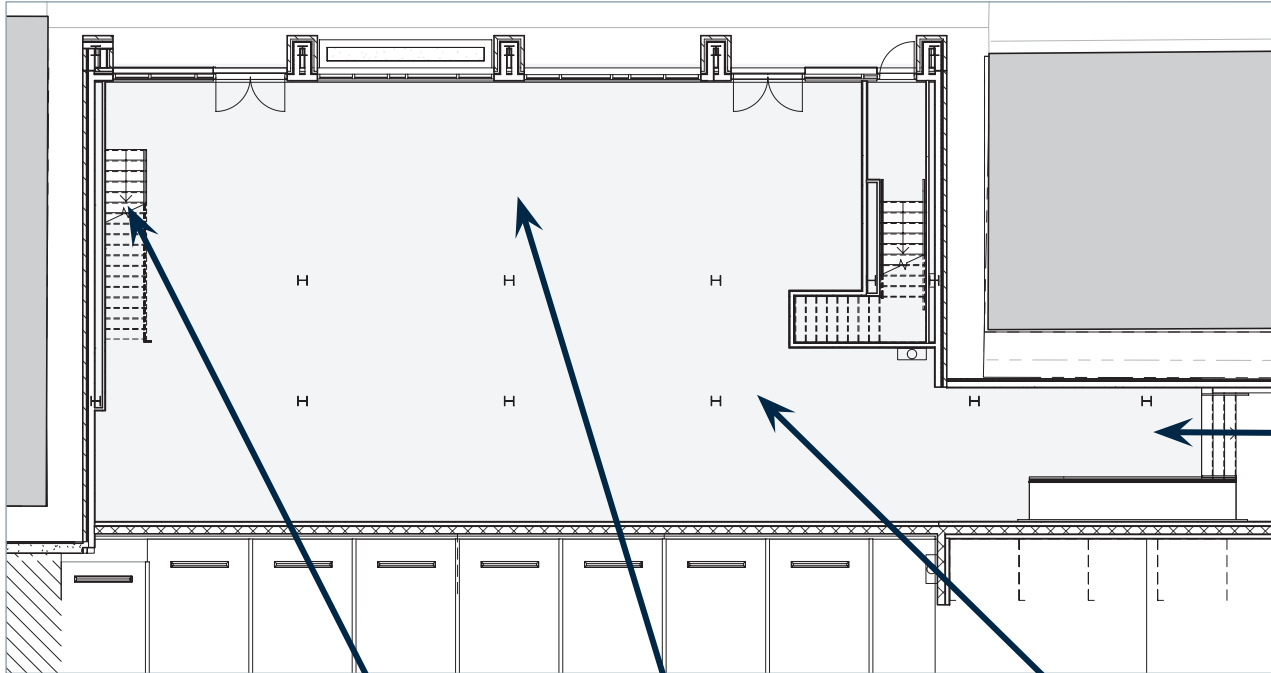
Space Available	3,600+ SF
Space Use	Retail/Commercial
Year Built	2019
Zoning:	MFR/LS
Walk Score®	Walker's Paradise (96)
Transit Score®	Good Transit (63)
Bike Score®	Bikeable (68)
Condition	Warm shell



FLOOR PLAN

GROUND LEVEL

PHOTO DETAILS



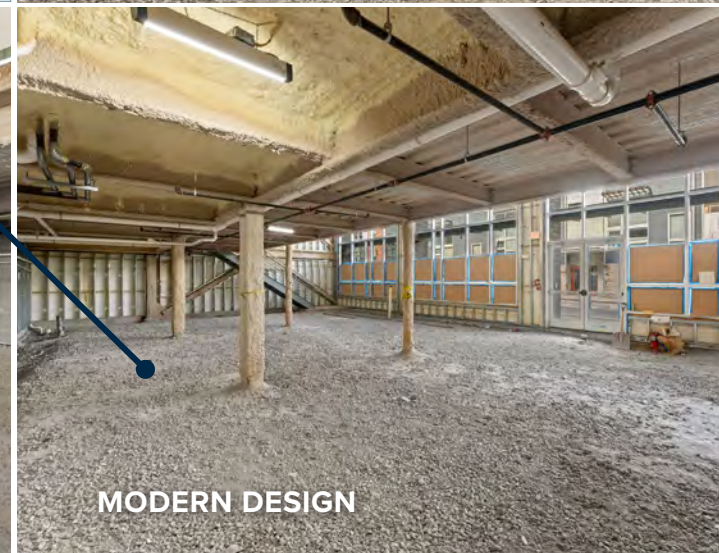
BACK OF HOUSE ENTRANCE ON W 3RD ST FOR EASY LOADING



STAIRCASE



GRAND ENTRANCE

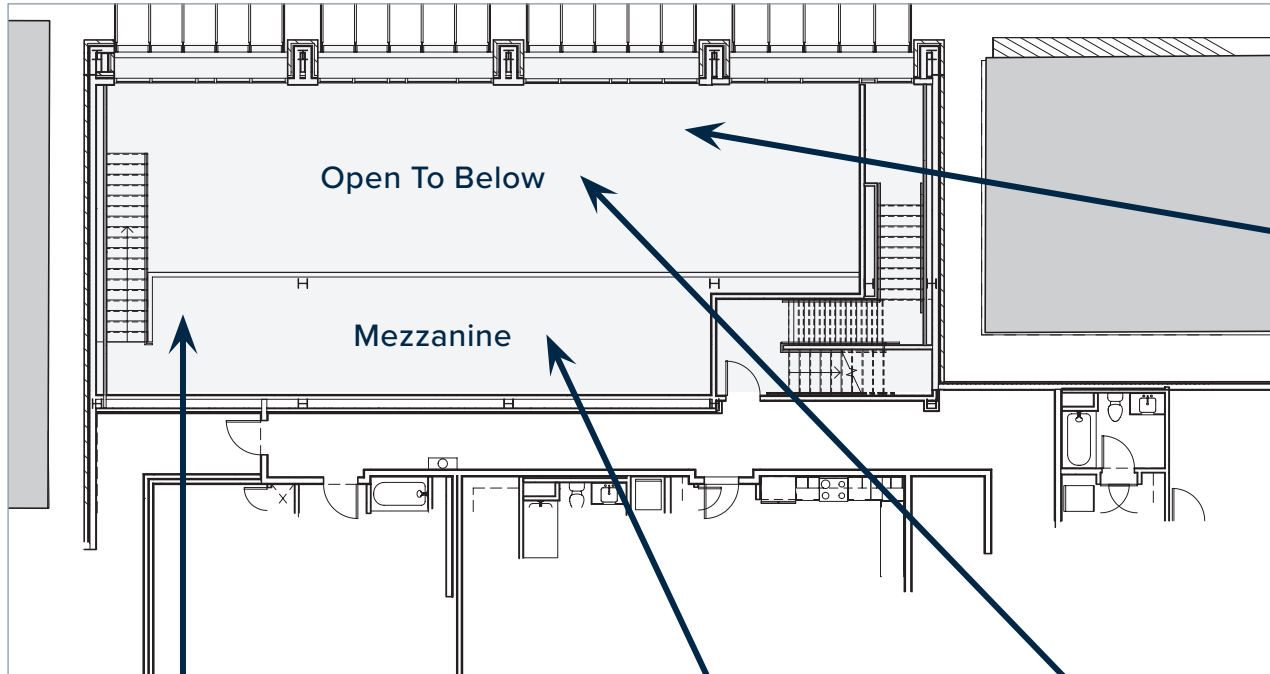


MODERN DESIGN

FLOOR PLAN

MEZZANINE LEVEL

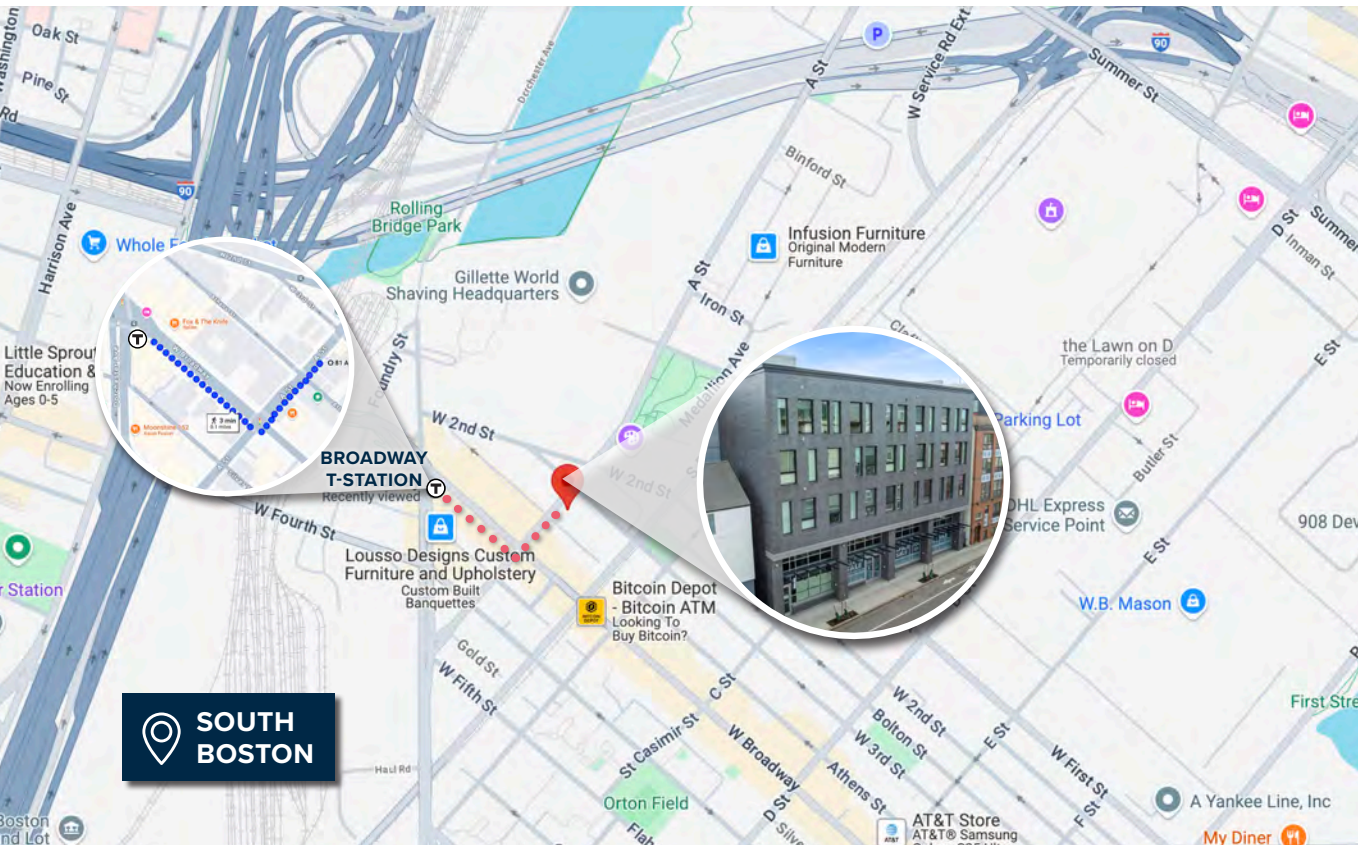
PHOTO DETAILS



AERIAL MAP

81 A STREET, BOSTON, MA

KEY HIGHLIGHTS



Prime Location: This highly visible street-level space is located in a bustling neighborhood near many popular restaurants and is walking distance to the South End, Chinatown, and the Seaport.

Modern and Spacious: The property offers over 3,600 SF of open space with large windows, flooding the area with natural light. The modern design creates an inviting atmosphere, perfect for any retail or specialty shop, salon/spa, fitness, café, and more.

Luxury Residences: New construction with upscale residences above and in the area.

Convenient Transit: Just 0.5 miles from the Broadway T Station on the Red Line.

Accessibility: Only a 6 minute drive to South Station. And a 12 minute drive to Logan Airport.

Thriving Demographics: The area is populated with 56% millennials and Gen Z, which is perfect for attracting young professionals.

 **10,156 ADT** AVERAGE DAILY TRAFFIC (ADT)

	2 miles	2 miles	10 miles
 2024 POPULATION	220,170	849,354	1,757,396
 AVG. HOUSEHOLD INCOME	\$132,546	\$120,406	\$128,272



GET IN TOUCH

81 A STREET

SOUTH BOSTON, MA 02127

OVER 3,600 SQUARE FT SPACE FOR SALE

Don't miss out on this exceptional opportunity in one of Boston's most desirable locations. Contact Dodge today to schedule a viewing and explore the potential of this property.



DODGE TUCKER

603-828-1384

dodge@tucker-re.com

www.tucker-re.com

