

# FOR LEASE

1514 W Lindsey St,  
Norman, OK 73072



# Johnson

Commercial Group

JohnsonCommercialGroup.com



## Offering Summary

**Available SF: 2,537 SF**

**Rate: \$24.00 SF/YR**

**NNN Fee: \$7.78 SF/YR**

**Zoning: C-2**

**Year Built: 1978**

**Traffic Count: 14,913**

**Chris Johnson**  
chris@jcgok.com  
405.435.3572

## Property Overview

This 2,537 SF restaurant space, formerly Ray's BBQ, is located at 1514 W Lindsey St in a prime Norman corridor near the University of Oklahoma campus. The property offers strong visibility and convenient access to I-35, while being just a few miles from downtown Norman. Fully set up for restaurant use, existing improvements include a walk-in freezer, fryers, stoves, and ovens, creating a great opportunity for food, retail, or service users seeking a high-traffic location near campus and surrounding amenities.



**BRICK & BEAM**  
REALTY

**Sally Allen**  
sally@jcgok.com  
405.623.7920

# FOR LEASE

1514 W Lindsey St,  
Norman, OK 73072

 **Johnson**  
Commercial Group

JohnsonCommercialGroup.com



**Chris Johnson**  
chris@jcgok.com  
405.435.3572



**BRICK & BEAM**  
REALTY

**Sally Allen**  
sally@jcgok.com  
405.623.7920

# FOR LEASE

1514 W Lindsey St,  
Norman, OK 73072

 **Johnson**  
Commercial Group

JohnsonCommercialGroup.com



**Chris Johnson**  
chris@jcgok.com  
405.435.3572



**BRICK & BEAM**  
REALTY

**Sally Allen**  
sally@jcgok.com  
405.623.7920

# FOR LEASE

1514 W Lindsey St,  
Norman, OK 73072

 **Johnson**  
Commercial Group

JohnsonCommercialGroup.com



**Chris Johnson**  
chris@jcgok.com  
405.435.3572



**BRICK & BEAM**  
REALTY

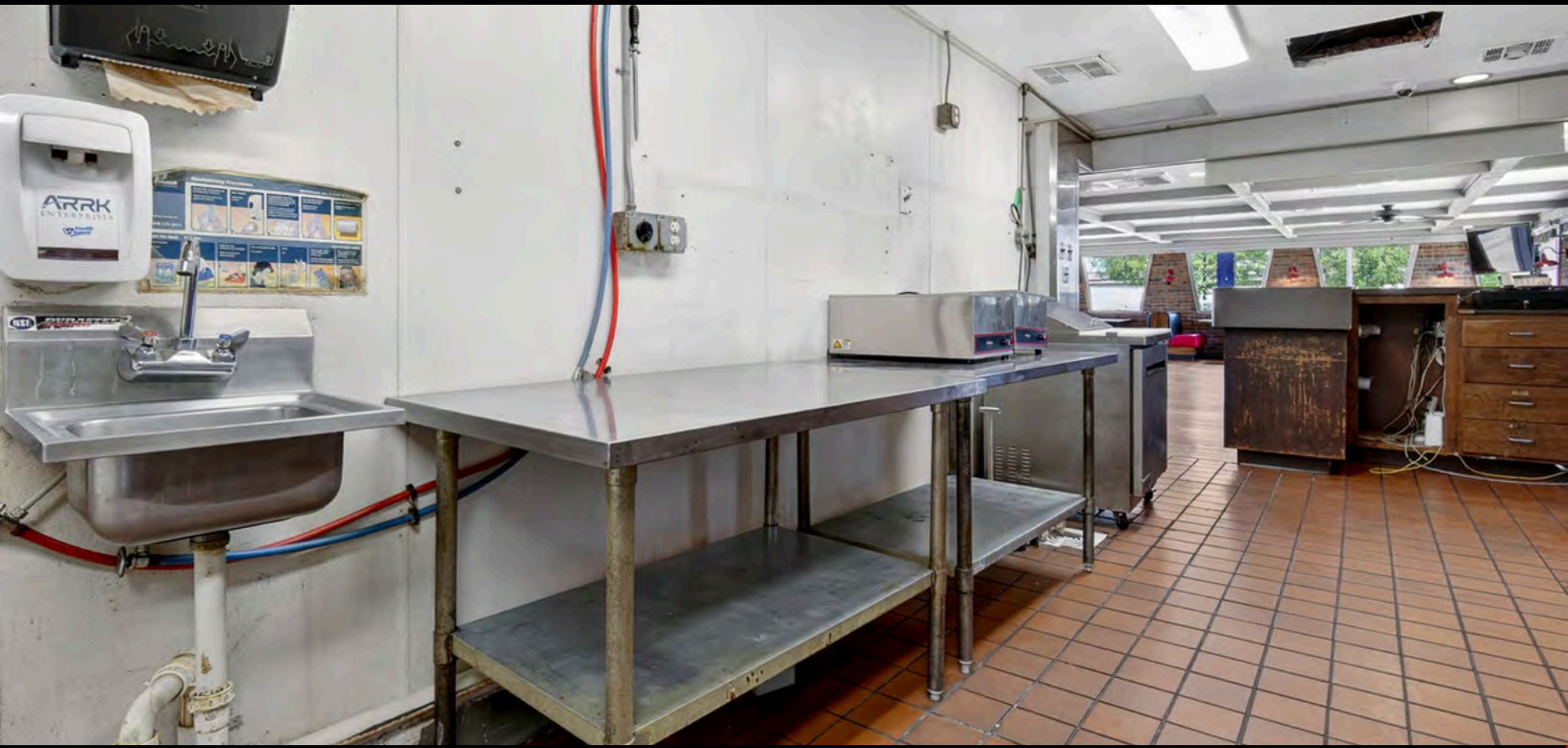
**Sally Allen**  
sally@jcgok.com  
405.623.7920

# FOR LEASE

1514 W Lindsey St,  
Norman, OK 73072

 **Johnson**  
Commercial Group

JohnsonCommercialGroup.com



**Chris Johnson**  
chris@jcgok.com  
405.435.3572



**BRICK & BEAM**  
REALTY

**Sally Allen**  
sally@jcgok.com  
405.623.7920

# FOR LEASE

1514 W Lindsey St,  
Norman, OK 73072



JohnsonCommercialGroup.com



**Chris Johnson**  
chris@jcgok.com  
405.435.3572



**BRICK & BEAM**  
REALTY

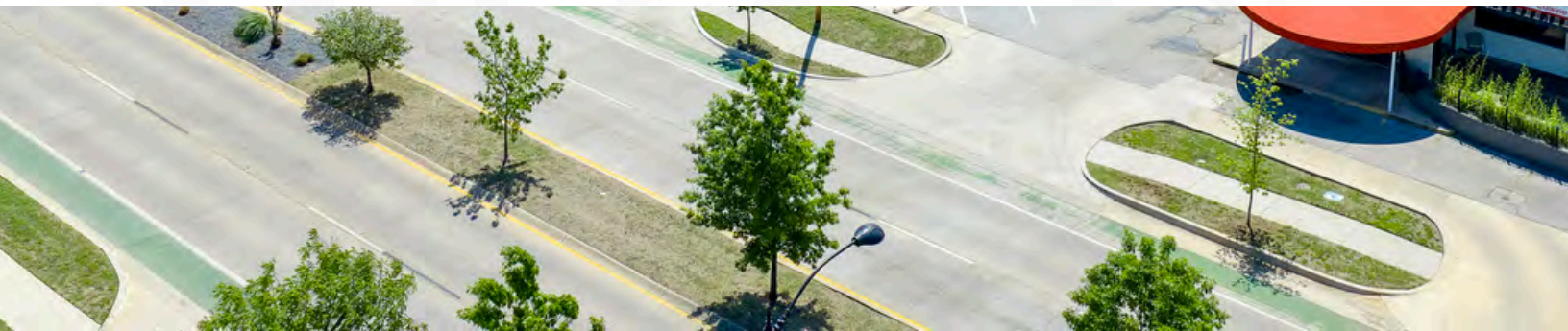
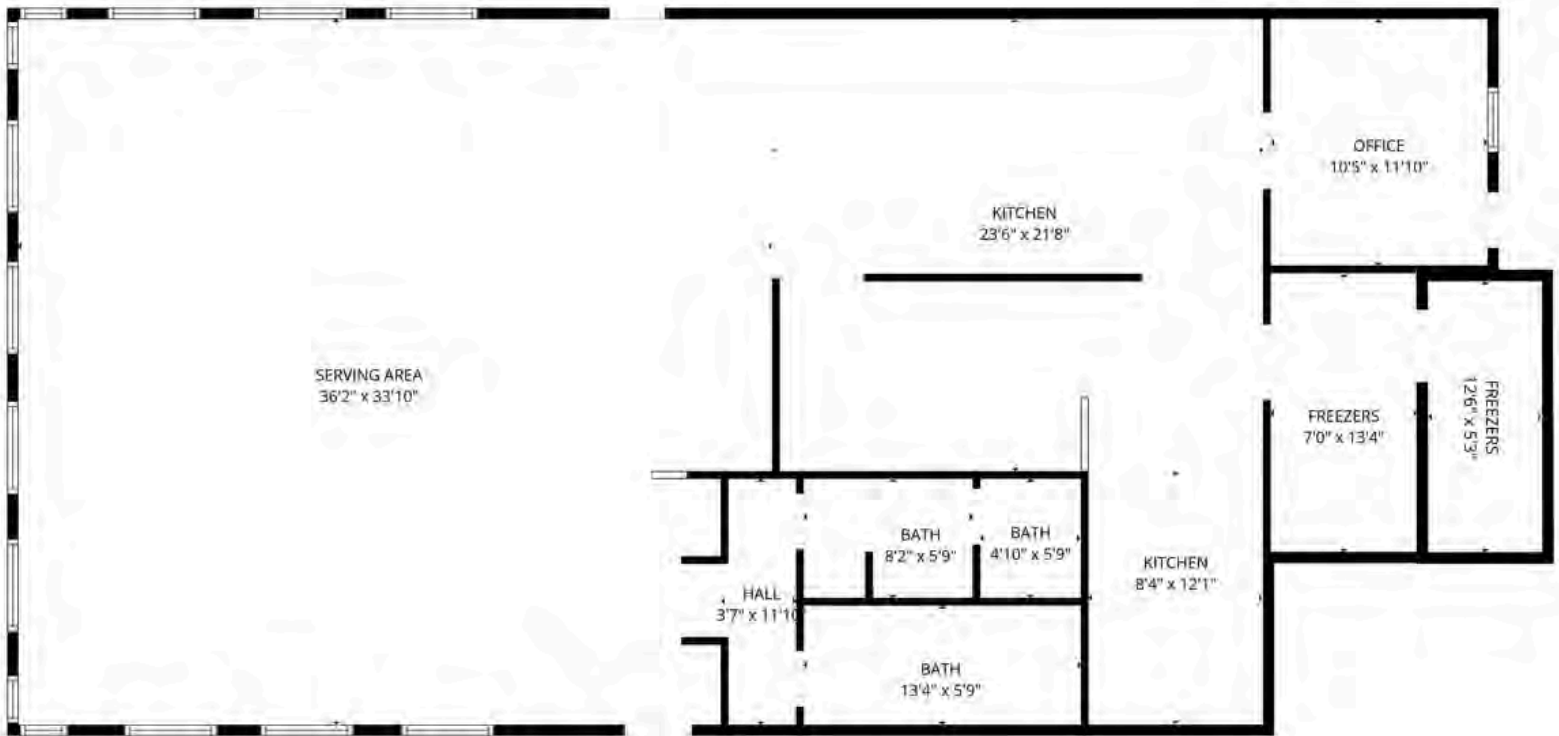
**Sally Allen**  
sally@jcgok.com  
405.623.7920

# FOR LEASE

1514 W Lindsey St,  
Norman, OK 73072



JohnsonCommercialGroup.com



Chris Johnson  
chris@jcgok.com  
405.435.3572



BRICK & BEAM  
REALTY

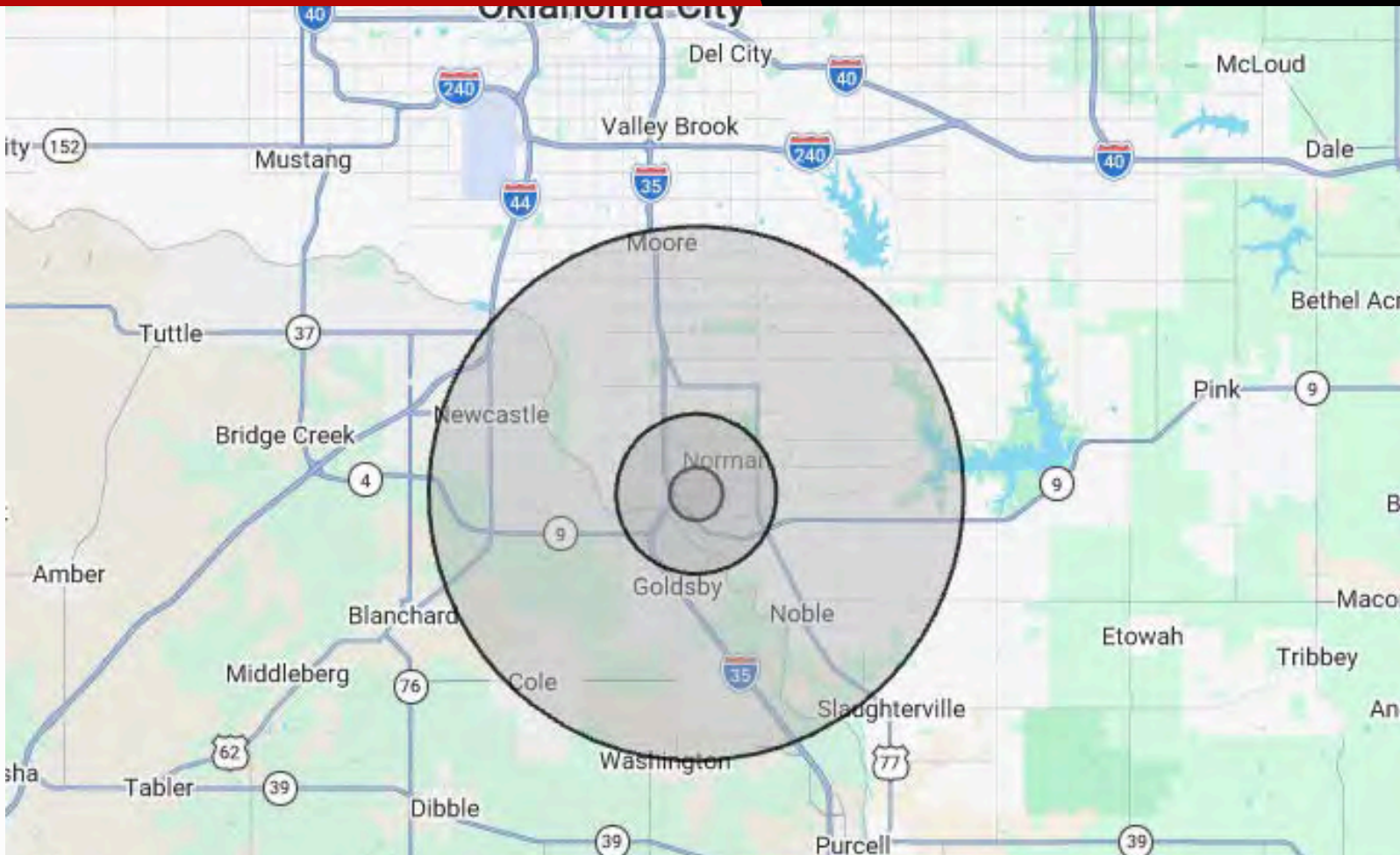
Sally Allen  
sally@jcgok.com  
405.623.7920

# FOR LEASE

1514 W Lindsey St,  
Norman, OK 73072



JohnsonCommercialGroup.com



### Demographics

### 1 MILE

### 3 MILE

### 10 MILE

	1 MILE	3 MILE	10 MILE
Population	18,127	73,177	214,361
Average Age	28	31	35
Employment	7,115	70,807	108,977
Households	5,3531	29,296	82,928
Ave. Household Income	\$85,991	\$73,036	\$94,658
Median Home Value	\$274,187	\$249,738	\$262,517

### Traffic Count

### Average Daily Volume

14,913 VPD

Demographic data provided by CoStar

**Chris Johnson**  
chris@jcgok.com  
405.435.3572



**BRICK & BEAM**  
REALTY

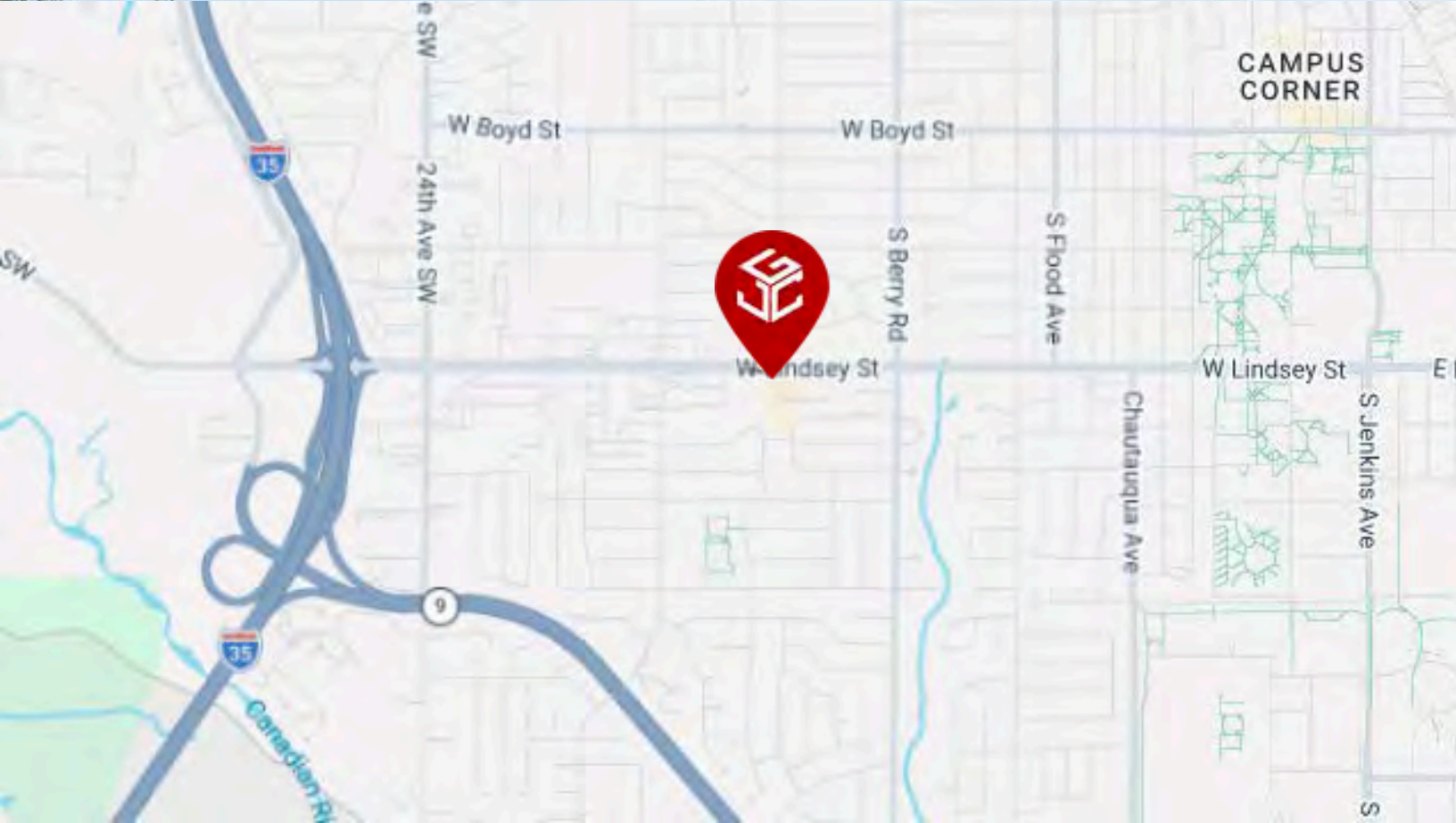
**Sally Allen**  
sally@jcgok.com  
405.623.7920

# FOR LEASE

1514 W Lindsey St,  
Norman, OK 73072

 **Johnson**  
Commercial Group

JohnsonCommercialGroup.com



**Chris Johnson**  
chris@jcgok.com  
405.435.3572



**BRICK & BEAM**  
REALTY

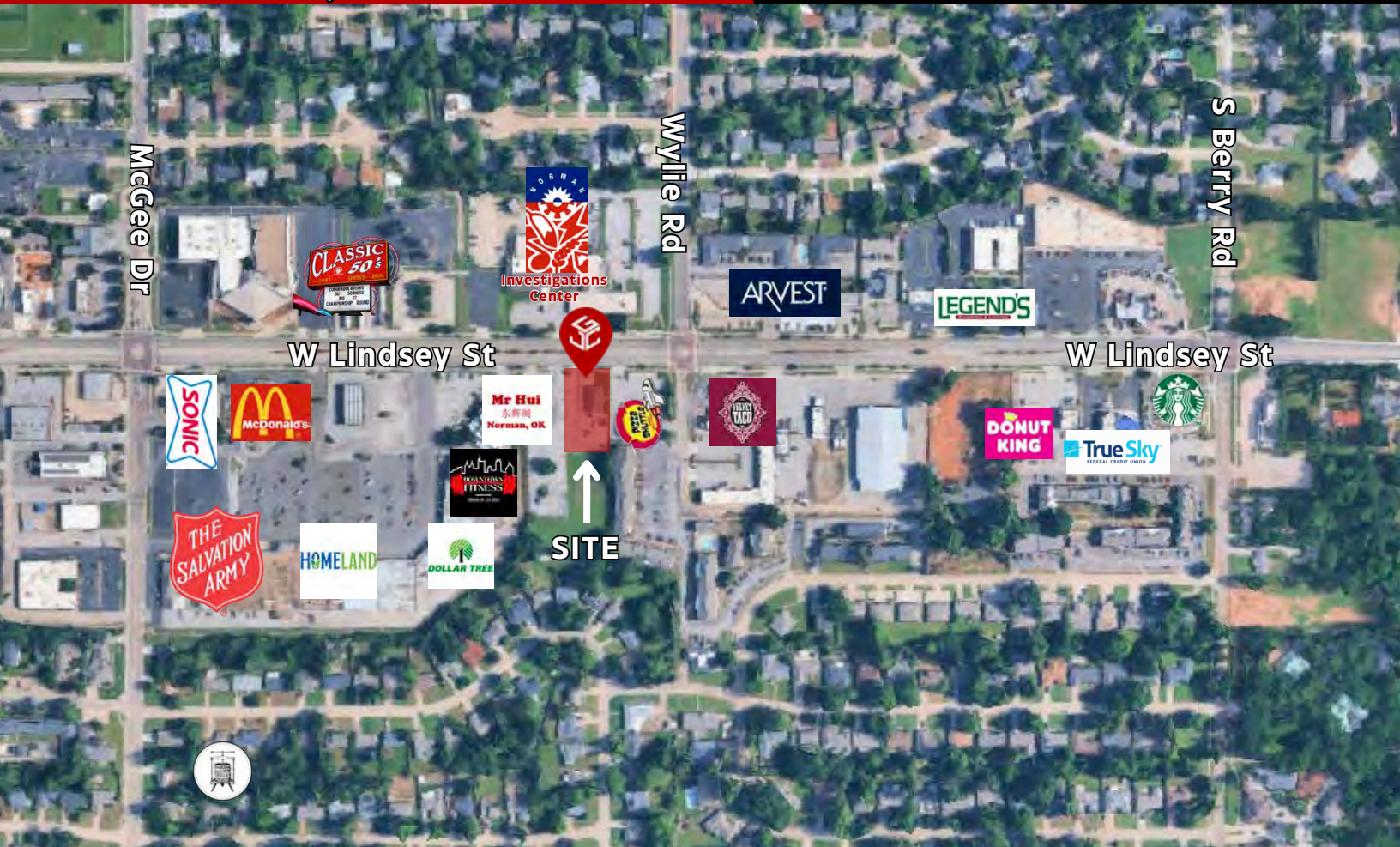
**Sally Allen**  
sally@jcgok.com  
405.623.7920

# FOR LEASE

1514 W Lindsey St,  
Norman, OK 73072



JohnsonCommercialGroup.com



## Disclaimer

A real estate broker is not authorized to give legal or tax advice. No representation is made by Johnson Commercial Group, its agents or employees, as to the legal effect or tax consequences of the information contained herein or any transaction relating thereto. Although all information furnished regarding property sales or financing options are from sources deemed to be reliable, such information has not been verified and no express representation is made on, or is in any way implied as to the accuracy thereof and is subject to errors, omissions, change of price, or other conditions prior to sale or withdrawal without notice.

**Chris Johnson**  
chris@jcgok.com  
405.435.3572



**BRICK & BEAM**  
REALTY

**Sally Allen**  
sally@jcgok.com  
405.623.7920